



SZABO SCANDIC

Part of Europa Biosite

Produktinformation



Forschungsprodukte & Biochemikalien



Zellkultur & Verbrauchsmaterial



Diagnostik & molekulare Diagnostik



Laborgeräte & Service

Weitere Information auf den folgenden Seiten!
See the following pages for more information!



Lieferung & Zahlungsart

siehe unsere [Liefer- und Versandbedingungen](#)

Zuschläge

- Mindermengenzuschlag
- Trockeneiszuschlag
- Gefahrgutzuschlag
- Expressversand

SZABO-SCANDIC HandelsgmbH

Quellenstraße 110, A-1100 Wien

T. +43(0)1 489 3961-0

F. +43(0)1 489 3961-7

mail@szabo-scandic.com

www.szabo-scandic.com

[linkedin.com/company/szaboscandic](https://www.linkedin.com/company/szaboscandic) 

SerpinB8 (h2): 293T Lysate: sc-158952

BACKGROUND

The serine proteinase inhibitors (serpins) comprise a superfamily of proteins with a diverse set of functions, including the control of blood coagulation, complement activation, programmed cell death and tissue development. SerpinB8 (serpin peptidase inhibitor, clade B (ovalbumin), member 8), also known as P18 or CAP2, is a 374 amino acid protein that localizes to the cytoplasm and belongs to the serine proteinase inhibitor family. Expressed at high levels in lung, liver, heart and skeletal muscle, SerpinB8, which exists as multiple alternatively spliced isoforms, is thought to play a role in platelet aggregation and platelet-regulated pathophysiological responses. The gene encoding SerpinB8 maps to a cluster of Serpin genes on human chromosome 18, which houses over 300 protein-coding genes and contains nearly 76 million bases.

REFERENCES

- Huber, R. and Carrell, R.W. 1989. Implications of the three-dimensional structure of α 1-antitrypsin for structure and function of serpins. *Biochemistry* 28: 8951-8966.
- Sprecher, C.A., Morgenstern, K.A., Mathewes, S., Dahlen, J.R., Schrader, S.K., Foster, D.C. and Kisiel, W. 1995. Molecular cloning, expression, and partial characterization of two novel members of the ovalbumin family of serine proteinase inhibitors. *J. Biol. Chem.* 270: 29854-29861.
- Bartuski, A.J., Kamachi, Y., Schick, C., Overhauser, J. and Silverman, G.A. 1997. Cytoplasmic antiproteinase 2 (PI8) and bomapin (PI10) map to the serpin cluster at 18q21.3. *Genomics.* 43: 321-328.
- Dahlen, J.R., Jean, F., Thomas, G., Foster, D.C. and Kisiel, W. 1998. Inhibition of soluble recombinant Furin by human proteinase inhibitor 8. *J. Biol. Chem.* 273: 1851-1854.
- Strik, M.C., Bladergroen, B.A., Wouters, D., Kisiel, W., Hooijberg, J.H., Verlaan, A.R., Hordijk, P.L., Schneider, P., Hack, C.E. and Kummer, J.A. 2002. Distribution of the human intracellular serpin protease inhibitor 8 in human tissues. *J. Histochem. Cytochem.* 50: 1443-1454.
- Online Mendelian Inheritance in Man, OMIM™. 2002. Johns Hopkins University, Baltimore, MD. MIM Number: 601697. World Wide Web URL: <http://www.ncbi.nlm.nih.gov/omim/>
- Pike, R.N., Buckle, A.M., le Bonniec, B.F. and Church, F.C. 2005. Control of the coagulation system by serpins. Getting by with a little help from glycosaminoglycans. *FEBS J.* 272: 4842-4851.
- Leblond, J., Laprise, M.H., Gaudreau, S., Grondin, F., Kisiel, W. and Dubois, C.M. 2006. The serpin proteinase inhibitor 8: an endogenous Furin inhibitor released from human platelets. *Thromb. Haemost.* 95: 243-252.

STORAGE

Store at -20° C. Repeated freezing and thawing should be minimized. Sample vial should be boiled once prior to use. Non-hazardous. No MSDS required.

PROTOCOLS

See our web site at www.scbt.com for detailed protocols and support products.

CHROMOSOMAL LOCATION

Genetic locus: SERPINB8 (human) mapping to 18q22.1.

PRODUCT

SerpinB8 (h2): 293T Lysate represents a lysate of human SerpinB8 transfected 293T cells and is provided as 100 μ g protein in 200 μ l SDS-PAGE buffer.

APPLICATIONS

SerpinB8 (h2): 293T Lysate is suitable as a Western Blotting positive control for human reactive SerpinB8 antibodies. Recommended use: 10-20 μ l per lane.

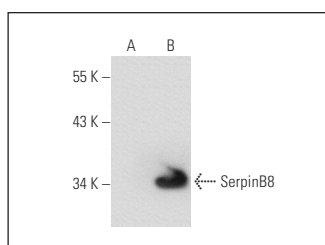
Control 293T Lysate: sc-117752 is available as a Western Blotting negative control lysate derived from non-transfected 293T cells.

SerpinB8 (PI-8): sc-101371 is recommended as a positive control antibody for Western Blot analysis of enhanced human SerpinB8 expression in SerpinB8 transfected 293T cells (starting dilution 1:100, dilution range 1:100-1:1,000).

RECOMMENDED SUPPORT REAGENTS

To ensure optimal results, the following support reagents are recommended:
1) Western Blotting: use m-IgG κ BP-HRP: sc-516102 or m-IgG κ BP-HRP (Cruz Marker): sc-516102-CM (dilution range: 1:1000-1:10000), Cruz Marker™ Molecular Weight Standards: sc-2035, UltraCruz® Blocking Reagent: sc-516214 and Western Blotting Luminol Reagent: sc-2048.

DATA



SerpinB8 (PI-8): sc-101371. Western blot analysis of SerpinB8 expression in non-transfected: sc-117752 (A) and human SerpinB8 transfected: sc-158952 (B) 293T whole cell lysates.

RESEARCH USE

For research use only, not for use in diagnostic procedures.