



SZABO SCANDIC

Part of Europa Biosite

Produktinformation



Forschungsprodukte & Biochemikalien



Zellkultur & Verbrauchsmaterial



Diagnostik & molekulare Diagnostik



Laborgeräte & Service

Weitere Information auf den folgenden Seiten!
See the following pages for more information!



Lieferung & Zahlungsart

siehe unsere [Liefer- und Versandbedingungen](#)

Zuschläge

- Mindermengenzuschlag
- Trockeneiszuschlag
- Gefahrgutzuschlag
- Expressversand

SZABO-SCANDIC HandelsgmbH

Quellenstraße 110, A-1100 Wien

T. +43(0)1 489 3961-0

F. +43(0)1 489 3961-7

mail@szabo-scandic.com

www.szabo-scandic.com

[linkedin.com/company/szaboscandic](https://www.linkedin.com/company/szaboscandic) 

ESE-1 (h2): 293T Lysate: sc-159172

BACKGROUND

ESE-1, a member of the Ets family of transcription factors, critically regulates epithelial cell differentiation and mediates vascular inflammation. ESE-1 is strongly expressed in vascular endothelium and smooth muscle cells, where it is induced in response to inflammatory cytokines and lipopolysaccharides, interacts with NF κ B to induce nitric oxide synthase, and is induced during terminal differentiation of epidermal and primary keratinocytes. In addition, ESE-1 is upregulated upon differentiation of corneal epithelium and interacts with Sp1 and AP-1 proteins to induce squamous differentiation marker expression in bronchial epithelial cells.

REFERENCES

- Oettgen, P., et al. 1997. Isolation and characterization of a novel epithelium-specific transcription factor, ESE-1, a member of the Ets family. *Mol. Cell Biol.* 17: 4419-4433.
- Rudders, S., et al. 2000. ESE-1 is a novel transcriptional mediator of inflammation that interacts with NF κ B to regulate the inducible nitric-oxide synthase gene. *J. Biol. Chem.* 276: 3302-3309.
- Yoshida, N., et al. 2000. Ets family transcription factor ESE-1 is expressed in corneal epithelial cells and is involved in their differentiation. *Mech. Dev.* 97: 27-34.
- Reddy, S.P., et al. 2003. Interplay between proximal and distal promoter elements is required for squamous differentiation marker induction in the bronchial epithelium: role for ESE-1, Sp1, and AP-1. *J. Biol. Chem.* 278: 21378-21387.
- Wang, H., et al. 2004. Positive and negative modulation of the transcriptional activity of the Ets factor ESE-1 through interaction with p300, CREB-binding protein, and Ku-70/Ku-86. *J. Biol. Chem.* 279: 25241-25250.
- Prescott, J.D., et al. 2004. The Ets transcription factor ESE-1 transforms MCF-12A human mammary epithelial cells via a novel cytoplasmic mechanism. *Mol. Cell Biol.* 24: 5548-5564.
- Grall, F.T., et al. 2005. The Ets transcription factor ESE-1 mediates induction of the Cox-2 gene by LPS in monocytes. *FEBS J.* 272: 1676-1687.

CHROMOSOMAL LOCATION

Genetic locus: ELF3 (human) mapping to 1q32.1.

PRODUCT

ESE-1 (h2): 293T Lysate represents a lysate of human ESE-1 transfected 293T cells and is provided as 100 μ g protein in 200 μ l SDS-PAGE buffer.

STORAGE

Store at -20 $^{\circ}$ C. Repeated freezing and thawing should be minimized. Sample vial should be boiled once prior to use. Non-hazardous. No MSDS required.

PROTOCOLS

See our web site at www.scbt.com for detailed protocols and support products.

APPLICATIONS

ESE-1 (h2): 293T Lysate is suitable as a Western Blotting positive control for human reactive ESE-1 antibodies. Recommended use: 10-20 μ l per lane.

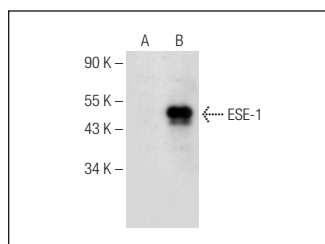
Control 293T Lysate: sc-117752 is available as a Western Blotting negative control lysate derived from non-transfected 293T cells.

ESE-1 (E-8): sc-376055 is recommended as a positive control antibody for Western Blot analysis of enhanced human ESE-1 expression in ESE-1 transfected 293T cells (starting dilution 1:100, dilution range 1:100-1:1,000).

RECOMMENDED SUPPORT REAGENTS

To ensure optimal results, the following support reagents are recommended:
 1) Western Blotting: use m-IgG κ BP-HRP: sc-516102 or m-IgG κ BP-HRP (Cruz Marker): sc-516102-CM (dilution range: 1:1000-1:10000), Cruz MarkerTM Molecular Weight Standards: sc-2035, UltraCruz[®] Blocking Reagent: sc-516214 and Western Blotting Luminol Reagent: sc-2048.

DATA



ESE-1 (E-8): sc-376055. Western blot analysis of ESE-1 expression in non-transfected: sc-117752 (A) and human ESE-1 transfected: sc-159172 (B) 293T whole cell lysates.

RESEARCH USE

For research use only, not for use in diagnostic procedures.