



SZABO SCANDIC

Part of Europa Biosite

Produktinformation



Forschungsprodukte & Biochemikalien



Zellkultur & Verbrauchsmaterial



Diagnostik & molekulare Diagnostik



Laborgeräte & Service

Weitere Information auf den folgenden Seiten!
See the following pages for more information!



Lieferung & Zahlungsart

siehe unsere [Liefer- und Versandbedingungen](#)

Zuschläge

- Mindermengenzuschlag
- Trockeneiszuschlag
- Gefahrgutzuschlag
- Expressversand

SZABO-SCANDIC HandelsgmbH

Quellenstraße 110, A-1100 Wien

T. +43(0)1 489 3961-0

F. +43(0)1 489 3961-7

mail@szabo-scandic.com

www.szabo-scandic.com

[linkedin.com/company/szaboscandic](https://www.linkedin.com/company/szaboscandic) 

Fibulin-1 (h): 293T Lysate: sc-159220

BACKGROUND

Fibulin-1 is a modular glycoprotein component of the elastic extracellular matrix fibers, basement membranes and blood. Fibulin-1 self associates as well as binds to calcium, Fibronectin, Laminin, nidogen and Fibrinogen. These interactions, individually or in combination, may account for the observed association of Fibulin-1 with basement membranes, connective tissue elastic fibers and fibrin clots. Fibulin-1 expression is stimulated by estrogen in ovarian cancer cell lines and has been suggested as both an agent of metastasis in ovarian cancer cells and an indicator for predicting cancer risk or aggressiveness in ovarian carcinomas. Other studies point to the inhibition of cancer cell motility with increasing exposure to Fibulin-1. The exact function of Fibulin-1 in the cell is unknown.

REFERENCES

- Clinton, G.M., et al. 1996. Estrogens increase the expression of Fibulin-1, an extracellular matrix protein secreted by human ovarian cancer cells. *Proc. Natl. Acad. Sci. USA* 93: 316-320.
- Tran, H., et al. 1997. The self-association and Fibronectin-binding sites of Fibulin-1 map to calcium-binding epidermal growth factor-like domains. *J. Biol. Chem.* 272: 22600-22606.
- Barth, J.L., et al. 1998. Identification of chicken and *C. elegans* Fibulin-1 homologs and characterization of the *C. elegans* Fibulin-1 gene. *Matrix Biol.* 17: 635-646.
- Roger, P., et al. 1998. Increased immunostaining of Fibulin-1, an estrogen-regulated protein in the stroma of human ovarian epithelial tumors. *Am. J. Pathol.* 153: 1579-1588.
- Hayashido, Y., et al. 1998. Estradiol and Fibulin-1 inhibit motility of human ovarian- and breast-cancer cells induced by Fibronectin. *Int. J. Cancer* 75: 654-658.
- Rocheffort, H., et al. 1998. Estrogen receptor mediated inhibition of cancer cell invasion and motility: an overview. *Steroid Biochem. Mol. Biol.* 65: 163-168.

CHROMOSOMAL LOCATION

Genetic locus: FBLN1 (human) mapping to 22q13.31.

PRODUCT

Fibulin-1 (h): 293T Lysate represents a lysate of human Fibulin-1 transfected 293T cells and is provided as 100 µg protein in 200 µl SDS-PAGE buffer.

APPLICATIONS

Fibulin-1 (h): 293T Lysate is suitable as a Western Blotting positive control for human reactive Fibulin-1 antibodies. Recommended use: 10-20 µl per lane.

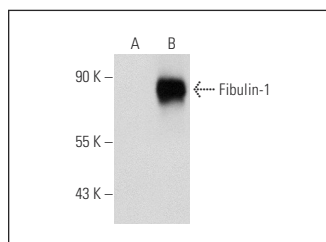
Control 293T Lysate: sc-117752 is available as a Western Blotting negative control lysate derived from non-transfected 293T cells.

Fibulin-1 (B-5): sc-25281 is recommended as a positive control antibody for Western Blot analysis of enhanced human Fibulin-1 expression in Fibulin-1 transfected 293T cells (starting dilution 1:100, dilution range 1:100-1:1,000).

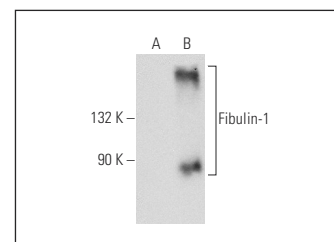
RECOMMENDED SUPPORT REAGENTS

To ensure optimal results, the following support reagents are recommended:
 1) Western Blotting: use m-IgGκ BP-HRP: sc-516102 or m-IgGκ BP-HRP (Cruz Marker): sc-516102-CM (dilution range: 1:1000-1:10000), Cruz Marker™ Molecular Weight Standards: sc-2035, UltraCruz® Blocking Reagent: sc-516214 and Western Blotting Luminol Reagent: sc-2048.

DATA



Fibulin-1 (B-5): sc-25281. Western blot analysis of Fibulin-1 expression in non-transfected: sc-117752 (A) and human Fibulin-1 transfected: sc-159220 (B) 293T whole cell lysates.



Fibulin-1 (A-5): sc-55470. Western blot analysis of Fibulin-1 expression in non-transfected: sc-117752 (A) and human Fibulin-1 transfected: sc-159220 (B) 293T whole cell lysates.

STORAGE

Store at -20° C. Repeated freezing and thawing should be minimized. Sample vial should be boiled once prior to use. Non-hazardous. No MSDS required.

RESEARCH USE

For research use only, not for use in diagnostic procedures.

PROTOCOLS

See our web site at www.scbt.com for detailed protocols and support products.