



# SZABO SCANDIC

Part of Europa Biosite

## Produktinformation



Forschungsprodukte & Biochemikalien



Zellkultur & Verbrauchsmaterial



Diagnostik & molekulare Diagnostik



Laborgeräte & Service

Weitere Information auf den folgenden Seiten!  
See the following pages for more information!



### Lieferung & Zahlungsart

siehe unsere [Liefer- und Versandbedingungen](#)

### Zuschläge

- Mindermengenzuschlag
- Trockeneiszuschlag
- Gefahrgutzuschlag
- Expressversand

### SZABO-SCANDIC HandelsgmbH

Quellenstraße 110, A-1100 Wien

T. +43(0)1 489 3961-0

F. +43(0)1 489 3961-7

[mail@szabo-scandic.com](mailto:mail@szabo-scandic.com)

[www.szabo-scandic.com](http://www.szabo-scandic.com)

[linkedin.com/company/szaboscandic](https://www.linkedin.com/company/szaboscandic) 

# Ep-CAM (h): 293T Lysate: sc-159303

## BACKGROUND

The epithelial cell adhesion molecule Ep-CAM, which is also designated tumor-associated calcium signal transducer 1 and MK-1, is a monomeric membrane glycoprotein that is expressed in most normal human epithelium and in most carcinomas. The human Ep-CAM gene encodes a 314 amino acid protein that is expressed as 2 forms, a major form and a minor form, which are reduced upon treatment with the amino-glycosylation inhibitor Tunicamycin. Ep-CAM is overexpressed in a variety of carcinomas and is, therefore, a potential target for the visualization and therapy of human solid tumors. Ep-CAM contains an extracellular domain containing two epidermal growth factor-like repeats, followed by a cysteine poor region, which are necessary for the adhesion properties of the molecule.

## REFERENCES

- Farr, A., et al. 1991. Epithelial heterogeneity in the murine thymus: a cell surface glycoprotein expressed by subcapsular and medullary epithelium. *J. Histochem. Cytochem.* 39: 645-653.
- Bergsagel, P.L., et al. 1992. A murine cDNA encodes a pan-epithelial glycoprotein that is also expressed on plasma cells. *J. Immunol.* 148: 590-596.
- Bjork, P., et al. 1993. Isolation, partial characterization, and molecular cloning of a human colon adenocarcinoma cell-surface glycoprotein recognized by the C215 mouse monoclonal antibody. *J. Biol. Chem.* 268: 24232-24241.
- Nelson, A.J., et al. 1996. The murine homolog of human Ep-CAM, a homotypic adhesion molecule, is expressed by thymocytes and thymic epithelial cells. *Eur. J. Immunol.* 26: 401-408.
- Litvinov, S.V., et al. 1997. Epithelial cell adhesion molecule (Ep-CAM) modulates cell-cell interactions mediated by classic cadherins. *J. Cell Biol.* 139: 1337-1348.
- Tomita, Y., et al. 2000. Molecular identification of a human carcinoma-associated glycoprotein antigen recognized by mouse monoclonal antibody FU-MK-1. *J. Cancer Res.* 91: 231-238.
- Taguchi, N., et al. 2000. Abnormal thymic expression of epithelial cell adhesion molecule (Ep-CAM) in New Zealand Black (NZB) mice. *J. Autoimmun.* 13: 393-404.
- Trebak, M., et al. 2001. Oligomeric state of the colon carcinoma-associated glycoprotein GA733-2 (Ep-CAM/EGP40) and its role in GA733-mediated homotypic cell-cell adhesion. *J. Biol. Chem.* 276: 2299-2309.
- Balzar, M., et al. 2001. Epidermal growth factor-like repeats mediate lateral and reciprocal interactions of Ep-CAM molecules in homophilic adhesions. *Mol. Cell. Biol.* 21: 2570-2580.

## CHROMOSOMAL LOCATION

Genetic locus: EPCAM (human) mapping to 2p21.

## PRODUCT

Ep-CAM (h): 293T Lysate represents a lysate of human Ep-CAM transfected 293T cells and is provided as 100 µg protein in 200 µl SDS-PAGE buffer.

## APPLICATIONS

Ep-CAM (h): 293T Lysate is suitable as a Western Blotting positive control for human reactive Ep-CAM antibodies. Recommended use: 10-20 µl per lane.

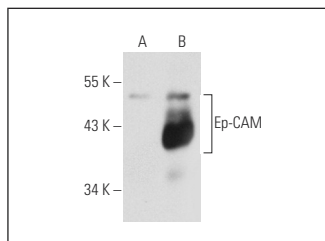
Control 293T Lysate: sc-117752 is available as a Western Blotting negative control lysate derived from non-transfected 293T cells.

Ep-CAM (C-10): sc-25308 is recommended as a positive control antibody for Western Blot analysis of enhanced human Ep-CAM expression in Ep-CAM transfected 293T cells (starting dilution 1:100, dilution range 1:100-1:1,000).

## RECOMMENDED SUPPORT REAGENTS

To ensure optimal results, the following support reagents are recommended:  
 1) Western Blotting: use m-IgGκ BP-HRP: sc-516102 or m-IgGκ BP-HRP (Cruz Marker): sc-516102-CM (dilution range: 1:1000-1:10000), Cruz Marker™ Molecular Weight Standards: sc-2035, UltraCruz® Blocking Reagent: sc-516214 and Western Blotting Luminol Reagent: sc-2048.

## DATA



Ep-CAM (C-10): sc-25308. Western blot analysis of Ep-CAM expression in non-transfected: sc-117752 (A) and human Ep-CAM transfected: sc-159303 (B) 293T whole cell lysates.

## STORAGE

Store at 4° C, **\*\*DO NOT FREEZE\*\***. Stable for one year from the date of shipment. Non-hazardous. No MSDS required.

## RESEARCH USE

For research use only, not for use in diagnostic procedures.

## PROTOCOLS

See our web site at [www.scbt.com](http://www.scbt.com) for detailed protocols and support products.