



SZABO SCANDIC

Part of Europa Biosite

Produktinformation



Forschungsprodukte & Biochemikalien



Zellkultur & Verbrauchsmaterial



Diagnostik & molekulare Diagnostik



Laborgeräte & Service

Weitere Information auf den folgenden Seiten!
See the following pages for more information!



Lieferung & Zahlungsart

siehe unsere [Liefer- und Versandbedingungen](#)

Zuschläge

- Mindermengenzuschlag
- Trockeneiszuschlag
- Gefahrgutzuschlag
- Expressversand

SZABO-SCANDIC HandelsgmbH

Quellenstraße 110, A-1100 Wien

T. +43(0)1 489 3961-0

F. +43(0)1 489 3961-7

mail@szabo-scandic.com

www.szabo-scandic.com

[linkedin.com/company/szaboscandic](https://www.linkedin.com/company/szaboscandic) 

GM-CSFR α (h): 293T Lysate: sc-159381

BACKGROUND

The human IL-3, IL-5 and GM-CSF receptors are each composed of both unique α subunits and a common β subunit. The α subunits are low affinity ligand binding proteins while the β subunits do not themselves bind ligand, but are required for high affinity binding by the α subunits (1–5). In contrast, the mouse IL-3 receptor has two distinct β subunits, one that functions only in IL-3 mediated cell signaling and a second that is shared with IL-5 and GM-CSF. The murine β -subunits are 91% homologous at the amino acid level but only 56% homologous to the human β subunit. Although neither the murine nor the human β subunit contains tyrosine kinase domains, both activate tyrosine phosphorylation mediated signaling pathways.

REFERENCES

- Hayashida, K., Kitamura, R., Gorman, D.M., Yokata, T. and Miyajima, A. 1990. Molecular cloning of a second subunit of the receptor for human granulocyte-macrophage colony-stimulating factor (GM-CSF): reconstitution of a high-affinity GM-CSF receptor. *Proc. Natl. Acad. Sci. USA* 87: 9655-9659.
- Tavernier, J., Devos, R., Cornelis, S., Tuyperis, T., VanderHeydon, J., Qiers, W. and Platenok, G. 1992. A human high-affinity interleukin-5 receptor (IL-5R) is composed of an IL-5 specific chain and a β chain shared with the receptor for GM-CSF. *Cell* 66: 1175-1184.
- Hara, T. and Miyajima, A. 1992. Two distinct functional receptors for mouse interleukin-3. *EMBO J.* 11: 1875-1884.
- Sakamaki, K., Miyajima, I., Kitamura, T. and Miyajima, A. 1992. Critical cytoplasmic domains of the common β subunit of the human GM-CSF, IL-3, and IL-5 receptors for growth signal transduction and tyrosine phosphorylation. *EMBO J.* 11: 3541-3549.
- Park, L.S., Martin, U., Sorenson, R., Luhr, S., Morrissey, P.J., Cosman, D. and Larsen, A. 1992. Cloning of the low-affinity murine granulocyte-macrophage colony-stimulating factor receptor and reconstitution of a high-affinity receptor complex. *Proc. Natl. Acad. Sci. USA* 89: 4295-4299.
- Miyajima, A., Kitamura, T., Harada, N., Yokota, T. and Arai, K. 1992. Cytokine receptors and signal transduction. *Annu. Rev. Immunol.* 10: 295-331.
- Goodall, G.J., Bagley, C.J., Vadas, M.A. and Lopez, A.F. 1993. A model for the interaction of the GM-CSF, IL-3 and IL-5 receptors with their ligands. *Growth Factors* 8: 87-97.
- Rao, P., Kitamura, T., Miyajima, A. and Mufson, R.A. 1995. Human IL-3 receptor signaling: rapid induction of phosphatidylcholine hydrolysis is independent of protein kinase C but dependent on tyrosine phosphorylation in transfected NIH 3T3 cells. *J. Immunol.* 154: 1664-1674.

CHROMOSOMAL LOCATION

Genetic locus: CSF2RA (human) mapping to Xp22.33/Yp11.32.

STORAGE

Store at -20° C. Repeated freezing and thawing should be minimized. Sample vial should be boiled once prior to use. Non-hazardous. No MSDS required.

PRODUCT

GM-CSFR α (h): 293T Lysate represents a lysate of human GM-CSFR α transfected 293T cells and is provided as 100 μ g protein in 200 μ l SDS-PAGE buffer.

APPLICATIONS

GM-CSFR α (h): 293T Lysate is suitable as a Western Blotting positive control for human reactive GM-CSFR α antibodies. Recommended use: 10-20 μ l per lane.

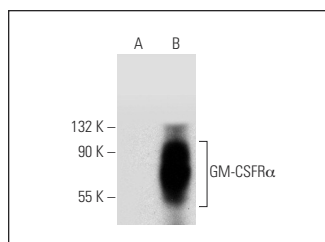
Control 293T Lysate: sc-117752 is available as a Western Blotting negative control lysate derived from non-transfected 293T cells.

GM-CSFR α (G-12): sc-398971 is recommended as a positive control antibody for Western Blot analysis of enhanced human GM-CSFR α expression in GM-CSFR α transfected 293T cells (starting dilution 1:100, dilution range 1:100-1:1,000).

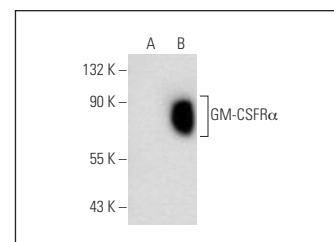
RECOMMENDED SUPPORT REAGENTS

To ensure optimal results, the following support reagents are recommended:
 1) Western Blotting: use m-IgG κ BP-HRP: sc-516102 or m-IgG κ BP-HRP (Cruz Marker): sc-516102-CM (dilution range: 1:1000-1:10000), Cruz Marker[™] Molecular Weight Standards: sc-2035, UltraCruz[®] Blocking Reagent: sc-516214 and Western Blotting Luminol Reagent: sc-2048.

DATA



GM-CSFR α (G-12): sc-398971. Western blot analysis of GM-CSFR α expression in non-transfected: sc-117752 (A) and human GM-CSFR α transfected: sc-159381 (B) 293T whole cell lysates.



GM-CSFR α (S-50): sc-456. Western blot analysis of GM-CSFR α expression in non-transfected: sc-117752 (A) and human GM-CSFR α transfected: sc-159381 (B) 293T whole cell lysates.

RESEARCH USE

For research use only, not for use in diagnostic procedures.

PROTOCOLS

See our web site at www.scbt.com for detailed protocols and support products.