



SZABO SCANDIC

Part of Europa Biosite

Produktinformation



Forschungsprodukte & Biochemikalien



Zellkultur & Verbrauchsmaterial



Diagnostik & molekulare Diagnostik



Laborgeräte & Service

Weitere Information auf den folgenden Seiten!
See the following pages for more information!



Lieferung & Zahlungsart

siehe unsere [Liefer- und Versandbedingungen](#)

Zuschläge

- Mindermengenzuschlag
- Trockeneiszuschlag
- Gefahrgutzuschlag
- Expressversand

SZABO-SCANDIC HandelsgmbH

Quellenstraße 110, A-1100 Wien

T. +43(0)1 489 3961-0

F. +43(0)1 489 3961-7

mail@szabo-scandic.com

www.szabo-scandic.com

[linkedin.com/company/szaboscandic](https://www.linkedin.com/company/szaboscandic) 

L-Selectin (h2): 293T Lysate: sc-159503

BACKGROUND

Selectins, also designated CD62 antigens, comprise a family of carbohydrate-binding proteins involved in mediating cellular interactions with leukocytes. L-Selectin (also designated LECAM-1 or CD62L) is expressed on the majority of B and naive T cells and on most monocytes, neutrophils and eosinophils. L-Selectin interacts with specific carbohydrates expressed by activated endothelial cells. P-Selectin (also designated GMP-140 or CD62P), expressed on activated platelets and endothelial cells, and E-Selectin (also designated ELMA-1 or CD62E), expressed on endothelial cells, exhibit overlapping ligand specificities. Both recognize sialyl-Le^x as a ligand and bind to specific carbohydrates on neutrophils and monocytes.

REFERENCES

1. Varki, A. 1994. Selectin ligands. *Proc. Natl. Acad. Sci. USA* 91: 7390-7397.
2. Tedder, T.F., Steeber, D.A., Chen, A. and Engel, P. 1995. The selectins: vascular adhesion molecules. *FASEB J.* 10: 866-873.
3. Lasky, L.A. 1995. Selectin-carbohydrate interactions and the initiation of the inflammatory response. *Annu. Rev. Biochem.* 64: 113-139.
4. Pavalko, F.M., Walker, D.M., Graham, L., Goheen, M., Doerschuk, C.M. and Kansas, G.S. 1995. The cytoplasmic domain of L-Selectin interacts with cytoskeletal proteins via α -actinin: receptor positioning in microvilli does not require interaction with α -actinin. *J. Cell Biol.* 129: 1155-1164.
5. McEver, R.P., Moore, K.L. and Cummings, R.D. 1996. Leukocyte trafficking mediated by Selectin-carbohydrate interactions. *J. Biol. Chem.* 270: 11025-11028.
6. Diacovo, T.G., Puri, K.D., Warnock, R.A., Springer, T.A. and von Andrian, U.H. 1996. Platelet-mediated lymphocyte delivery to high endothelial venules. *Science* 273: 252-255.
7. Howard, C.J. 1996. Ruminant cluster CD62L. *Vet. Immunol. Immunopathol.* 52: 255-256.
8. Nicholson, M.W., Barclay, A.N., Singer, M.S., Rosen, S.D. and van der Merwe, P.A. 1998. Affinity and kinetic analysis of L-Selectin (CD62L) binding to glycosylation-dependent cell-adhesion molecule-1. *J. Biol. Chem.* 273: 763-770.

CHROMOSOMAL LOCATION

Genetic locus: SELL (human) mapping to 1q24.2.

PRODUCT

L-Selectin (h2): 293T Lysate represents a lysate of human L-Selectin transfected 293T cells and is provided as 100 μ g protein in 200 μ l SDS-PAGE buffer.

STORAGE

Store at -20° C. Repeated freezing and thawing should be minimized. Sample vial should be boiled once prior to use. Non-hazardous. No MSDS required.

RESEARCH USE

For research use only, not for use in diagnostic procedures.

APPLICATIONS

L-Selectin (h2): 293T Lysate is suitable as a Western Blotting positive control for human reactive L-Selectin antibodies. Recommended use: 10-20 μ l per lane.

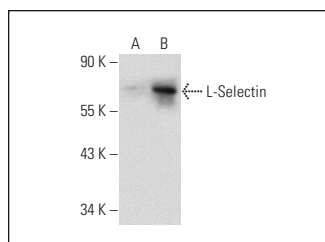
Control 293T Lysate: sc-117752 is available as a Western Blotting negative control lysate derived from non-transfected 293T cells.

L-Selectin (lam1-116): sc-13505 is recommended as a positive control antibody for Western Blot analysis of enhanced human L-Selectin expression in L-Selectin transfected 293T cells (starting dilution 1:100, dilution range 1:100-1:1,000).

RECOMMENDED SUPPORT REAGENTS

To ensure optimal results, the following support reagents are recommended:
1) Western Blotting: use m-IgG κ BP-HRP: sc-516102 or m-IgG κ BP-HRP (Cruz Marker): sc-516102-CM (dilution range: 1:1000-1:10000), Cruz Marker[™] Molecular Weight Standards: sc-2035, UltraCruz[®] Blocking Reagent: sc-516214 and Western Blotting Luminol Reagent: sc-2048.

DATA



L-Selectin (lam1-116): sc-13505. Western blot analysis of L-Selectin expression in non-transfected: sc-117752 (A) and human L-Selectin transfected: sc-159503 (B) 293T whole cell lysates.

PROTOCOLS

See our web site at www.scbt.com for detailed protocols and support products.