



SZABO SCANDIC

Part of Europa Biosite

Produktinformation



Forschungsprodukte & Biochemikalien



Zellkultur & Verbrauchsmaterial



Diagnostik & molekulare Diagnostik



Laborgeräte & Service

Weitere Information auf den folgenden Seiten!
See the following pages for more information!



Lieferung & Zahlungsart

siehe unsere [Liefer- und Versandbedingungen](#)

Zuschläge

- Mindermengenzuschlag
- Trockeneiszuschlag
- Gefahrgutzuschlag
- Expressversand

SZABO-SCANDIC HandelsgmbH

Quellenstraße 110, A-1100 Wien

T. +43(0)1 489 3961-0

F. +43(0)1 489 3961-7

mail@szabo-scandic.com

www.szabo-scandic.com

[linkedin.com/company/szaboscandic](https://www.linkedin.com/company/szaboscandic) 

PRELI (h): 293T Lysate: sc-159700

BACKGROUND

PRELI (protein of relevant evolutionary and lymphoid interest), also known as PRELID1, is a 219 amino acid mitochondrial protein that is encoded within a conserved κ B- α and Rab 24 gene cluster. PRELI is highly expressed in fetal liver, which is a major site for B cell lymphopoiesis. During maturation, expression levels of PRELI are drastically reduced in liver and predominant expression is found in brain, lymph nodes, peripheral blood leukocytes and spleen. Changes in expression pattern suggest that PRELI is vital for the development of immunocompetent organs. PRELI contains a late embryogenesis abundant (LEA) motif which is commonly found in plant proteins, suggesting a phylogenetic link between plants and animals. PRELI also contains a 170 amino acid PRELI/MSF1 domain at its N-terminus which may have a function associated with the cellular membrane.

REFERENCES

- Niu, S., Antin, P.B. and Morkin, E. 1996. Cloning and sequencing of a developmentally regulated avian mRNA containing the LEA motif found in plant seed proteins. *Gene* 175: 187-191.
- Guzman-Rojas, L., Sims, J.C., Rangel, R., Guret, C., Sun, Y., Alcocer, J.M. and Martinez-Valdez, H. 2000. PRELI, the human homologue of the avian px19, is expressed by germinal center B lymphocytes. *Int. Immunol.* 12: 607-612.
- Jones, J.B., Song, J.J., Hempen, P.M., Parmigiani, G., Hruban, R.H. and Kern, S.E. 2001. Detection of mitochondrial DNA mutations in pancreatic cancer offers a "mass"-ive advantage over detection of nuclear DNA mutations. *Cancer Res.* 61: 1299-1304.
- Fox, E.J., Stubbs, S.A., Kyaw Tun, J., Leek, J.P., Markham, A.F. and Wright, S.C. 2004. PRELI (protein of relevant evolutionary and lymphoid interest) is located within an evolutionarily conserved gene cluster on chromosome 5q34-q35 and encodes a novel mitochondrial protein. *Biochem. J.* 378: 817-825.
- Dee, C.T. and Moffat, K.G. 2005. A novel family of mitochondrial proteins is represented by the *Drosophila* genes slmo, PRELI-like and real-time. *Dev. Genes Evol.* 215: 248-254.
- Knights, A.J., Weinzierl, A.O., Flad, T., Guinn, B.A., Mueller, L., Mufti, G.J., Stevanovic, S. and Pawelec, G. 2006. A novel MHC-associated proteinase 3 peptide isolated from primary chronic myeloid leukaemia cells further supports the significance of this antigen for the immunotherapy of Myeloid leukaemias. *Leukemia* 20: 1067-1072.
- Sesaki, H., Dunn, C.D., Iijima, M., Shepard, K.A., Yaffe, M.P., Machamer, C.E. and Jensen, R.E. 2006. Ups1p, a conserved intermembrane space protein, regulates mitochondrial shape and alternative topogenesis of Mgm1p. *J. Cell Biol.* 173: 651-658.

CHROMOSOMAL LOCATION

Genetic locus: PRELID1 (human) mapping to 5q35.3.

PRODUCT

PRELI (h): 293T Lysate represents a lysate of human PRELI transfected 293T cells and is provided as 100 μ g protein in 200 μ l SDS-PAGE buffer.

APPLICATIONS

PRELI (h): 293T Lysate is suitable as a Western Blotting positive control for human reactive PRELI antibodies. Recommended use: 10-20 μ l per lane.

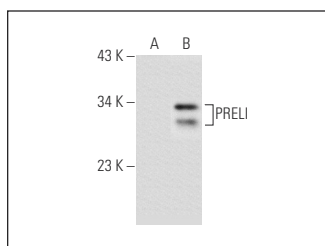
Control 293T Lysate: sc-117752 is available as a Western Blotting negative control lysate derived from non-transfected 293T cells.

PRELI (QF-7): sc-100817 is recommended as a positive control antibody for Western Blot analysis of enhanced human PRELI expression in PRELI transfected 293T cells (starting dilution 1:100, dilution range 1:100-1:1,000).

RECOMMENDED SUPPORT REAGENTS

To ensure optimal results, the following support reagents are recommended:
 1) Western Blotting: use m-IgG κ BP-HRP: sc-516102 or m-IgG κ BP-HRP (Cruz Marker): sc-516102-CM (dilution range: 1:1000-1:10000), Cruz Marker™ Molecular Weight Standards: sc-2035, UltraCruz® Blocking Reagent: sc-516214 and Western Blotting Luminol Reagent: sc-2048.

DATA



PRELI (QF-7): sc-100817. Western blot analysis of PRELI expression in non-transfected: sc-117752 (A) and human PRELI transfected: sc-159700 (B) 293T whole cell lysates.

STORAGE

Store at -20° C. Repeated freezing and thawing should be minimized. Sample vial should be boiled once prior to use. Non-hazardous. No MSDS required.

RESEARCH USE

For research use only, not for use in diagnostic procedures.

PROTOCOLS

See our web site at www.scbt.com for detailed protocols and support products.