



SZABO SCANDIC

Part of Europa Biosite

Produktinformation



Forschungsprodukte & Biochemikalien



Zellkultur & Verbrauchsmaterial



Diagnostik & molekulare Diagnostik



Laborgeräte & Service

Weitere Information auf den folgenden Seiten!
See the following pages for more information!



Lieferung & Zahlungsart

siehe unsere [Liefer- und Versandbedingungen](#)

Zuschläge

- Mindermengenzuschlag
- Trockeneiszuschlag
- Gefahrgutzuschlag
- Expressversand

SZABO-SCANDIC HandelsgmbH

Quellenstraße 110, A-1100 Wien

T. +43(0)1 489 3961-0

F. +43(0)1 489 3961-7

mail@szabo-scandic.com

www.szabo-scandic.com

[linkedin.com/company/szaboscandic](https://www.linkedin.com/company/szaboscandic) 

Fes (h2): 293T Lysate: sc-159705

BACKGROUND

Fes, a tyrosine kinase encoded by the proto-oncogene c-Fes, is expressed in macrophages and is thought to be involved in the regulation of myeloid differentiation. Fes has several characteristics typical of a cytoplasmic class of protein tyrosine kinases, including an SH2 domain and autophosphorylation capabilities. Fes has been shown to associate with IL-4 and several hematopoietic cytokine receptors, as well as with BCR. Phosphorylation of BCR by Fes induces the association of BCR with the Ras guanine nucleotide exchange factor complex GRB2/Sos.

REFERENCES

- Hjermstad, S.J., Peters, K.L., Briggs, S.D., Glazer, R.I. and Smithgall, T.E. 1993. Regulation of the human c-Fes protein kinase (p93c-Fes) by its Src homology 2 domain and major autophosphorylation site (Tyr-713). *Oncogene* 8: 2283-2292.
- Hjermstad, S.J., Briggs, S.D. and Smithgall, T.E. 1993. Phosphorylation of the Ras GTPase-activating protein (GAP) by the p93c-Fes protein kinase *in vitro* and formation of GAP-Fes complexes via an SH2 domain-dependent mechanism. *Biochemistry* 32: 10519-10525.
- Izuhara, K., Feldman, R.A., Greer, P. and Harada, N. 1994. Interaction of the c-Fes proto-oncogene product with the interleukin-4 receptor. *J. Biol. Chem.* 269: 18623-18629.
- Maru, Y., Peters, K.L., Afar, D.E., Shibuya, M., Witte, O.N. and Smithgall, T.E. 1995. Tyrosine phosphorylation of BCR by FPS/Fes protein-tyrosine kinases induces association of BCR with GRB2/Sos. *Mol. Cell. Biol.* 15: 835-842.
- Rogers, J.A., Read, R.D., Li, J., Peters, K.L. and Smithgall, T.E. 1996. Autophosphorylation of the Fes tyrosine kinase. Evidence for an intermolecular mechanism involving two kinase domain tyrosine residues. *J. Biol. Chem.* 271: 17519-17525.
- Jucker, M., McKenna, K., da Silva, A.J., Rudd, C.E. and Feldman, R.A. 1997. The Fes protein-tyrosine kinase phosphorylates a subset of macrophage proteins that are involved in cell adhesion and cell-cell signaling. *J. Biol. Chem.* 272: 2104-2109.

CHROMOSOMAL LOCATION

Genetic locus: FES (human) mapping to 15q26.1.

PRODUCT

Fes (h2): 293T Lysate represents a lysate of human Fes transfected 293T cells and is provided as 100 µg protein in 200 µl SDS-PAGE buffer.

STORAGE

Store at -20° C. Repeated freezing and thawing should be minimized. Sample vial should be boiled once prior to use. Non-hazardous. No MSDS required.

PROTOCOLS

See our web site at www.scbt.com for detailed protocols and support products.

APPLICATIONS

Fes (h2): 293T Lysate is suitable as a Western Blotting positive control for human reactive Fes antibodies. Recommended use: 10-20 µl per lane.

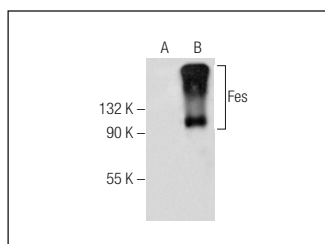
Control 293T Lysate: sc-117752 is available as a Western Blotting negative control lysate derived from non-transfected 293T cells.

Fes (D-9): sc-377179 is recommended as a positive control antibody for Western Blot analysis of enhanced human Fes expression in Fes transfected 293T cells (starting dilution 1:100, dilution range 1:100-1:1,000).

RECOMMENDED SUPPORT REAGENTS

To ensure optimal results, the following support reagents are recommended:
 1) Western Blotting: use m-IgGκ BP-HRP: sc-516102 or m-IgGκ BP-HRP (Cruz Marker): sc-516102-CM (dilution range: 1:1000-1:10000), Cruz Marker™ Molecular Weight Standards: sc-2035, UltraCruz® Blocking Reagent: sc-516214 and Western Blotting Luminol Reagent: sc-2048.

DATA



Fes (D-9): sc-377179. Western blot analysis of Fes expression in non-transfected: sc-117752 (A) and human Fes transfected: sc-159705 (B) 293T whole cell lysates.

RESEARCH USE

For research use only, not for use in diagnostic procedures.