



SZABO SCANDIC

Part of Europa Biosite

Produktinformation



Forschungsprodukte & Biochemikalien



Zellkultur & Verbrauchsmaterial



Diagnostik & molekulare Diagnostik



Laborgeräte & Service

Weitere Information auf den folgenden Seiten!
See the following pages for more information!



Lieferung & Zahlungsart

siehe unsere [Liefer- und Versandbedingungen](#)

Zuschläge

- Mindermengenzuschlag
- Trockeneiszuschlag
- Gefahrgutzuschlag
- Expressversand

SZABO-SCANDIC HandelsgmbH

Quellenstraße 110, A-1100 Wien

T. +43(0)1 489 3961-0

F. +43(0)1 489 3961-7

mail@szabo-scandic.com

www.szabo-scandic.com

[linkedin.com/company/szaboscandic](https://www.linkedin.com/company/szaboscandic) 

ERF (h2): 293T Lysate: sc-159761

BACKGROUND

ABT1 (activator of basal transcription 1) is a nuclear protein that associates with the TATA-binding protein (TBP) and enhances basal transcription activity of class II promoters. ABT1 associates with TBP in HeLa nuclear extracts *in vitro*. Another protein, designated ERF, is a member of the Ets family of transcription factors. The members of the Ets family are grouped because they share a highly conserved DNA binding domain. These factors are involved in growth factor pathways and regulate both proliferation and differentiation. ERF (Ets-2 repressor factor) is a ubiquitously expressed Ets-domain protein that exhibits strong transcriptional repressor activity, suppresses Ets-induced transformation and is regulated by MAPK phosphorylation. ERF transcription may be regulated by Ets-domain proteins. Additionally, modulation of ERF activity is involved in the transcriptional regulation of genes activated during entry into G₁ phase.

REFERENCES

1. Sgouras, D.N., Athanasiou, M.A., Beal, G.J., Jr., Fisher, R.J., Blair, D.G. and Mavrothalassitis, G.J. 1995. ERF: an Ets domain protein with strong transcriptional repressor activity, can suppress Ets-associated tumorigenesis and is regulated by phosphorylation during cell cycle and mitogenic stimulation. *EMBO J.* 14: 4781-4793.
2. de Castro, C.M., Rabe, S.M., Langdon, S.D., Fleenor, D.E., Slentz-Kesler, K., Ahmed, M.N., Qumsiyeh, M.B. and Kaufman, R.E. 1997. Genomic structure and chromosomal localization of the novel Ets factor, PE-2 (ERF). *Genomics* 42: 227-235.
3. Liu, D., Pavlopoulos, E., Modi, W., Moschonas, N. and Mavrothalassitis, G. 1997. ERF: genomic organization, chromosomal localization and promoter analysis of the human and mouse genes. *Oncogene* 14: 1445-1451.
4. Oda, T., Kayukawa, K., Hagiwara, H., Yudate, H.T., Masuho, Y., Murakami, Y., Tamura, T.A. and Muramatsu, M.A. 2000. A novel TATA-binding protein-binding protein, ABT1, activates basal transcription and has a yeast homolog that is essential for growth. *Mol. Cell. Biol.* 20: 1407-1418.
5. Locuslink Report (LocusID: 29777). <http://www.ncbi.nlm.nih.gov/locuslink/>

CHROMOSOMAL LOCATION

Genetic locus: ERF (human) mapping to 19q13.2.

PRODUCT

ERF (h2): 293T Lysate represents a lysate of human ERF transfected 293T cells and is provided as 100 µg protein in 200 µl SDS-PAGE buffer.

APPLICATIONS

ERF (h2): 293T Lysate is suitable as a Western Blotting positive control for human reactive ERF antibodies. Recommended use: 10-20 µl per lane.

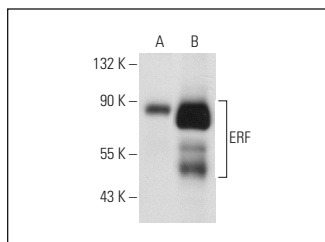
Control 293T Lysate: sc-117752 is available as a Western Blotting negative control lysate derived from non-transfected 293T cells.

ERF (33L): sc-130372 is recommended as a positive control antibody for Western Blot analysis of enhanced human ERF expression in ERF transfected 293T cells (starting dilution 1:100, dilution range 1:100-1:1,000).

RECOMMENDED SUPPORT REAGENTS

To ensure optimal results, the following support reagents are recommended:
 1) Western Blotting: use m-IgGκ BP-HRP: sc-516102 or m-IgGκ BP-HRP (Cruz Marker): sc-516102-CM (dilution range: 1:1000-1:10000), Cruz Marker™ Molecular Weight Standards: sc-2035, UltraCruz® Blocking Reagent: sc-516214 and Western Blotting Luminol Reagent: sc-2048.

DATA



ERF (33L): sc-130372. Western blot analysis of ERF expression in non-transfected: sc-117752 (A) and human ERF transfected: sc-159761 (B) 293T whole cell lysates.

STORAGE

Store at -20° C. Repeated freezing and thawing should be minimized. Sample vial should be boiled once prior to use. Non-hazardous. No MSDS required.

RESEARCH USE

For research use only, not for use in diagnostic procedures.

PROTOCOLS

See our web site at www.scbt.com for detailed protocols and support products.