



# SZABO SCANDIC

Part of Europa Biosite

## Produktinformation



Forschungsprodukte & Biochemikalien



Zellkultur & Verbrauchsmaterial



Diagnostik & molekulare Diagnostik



Laborgeräte & Service

Weitere Information auf den folgenden Seiten!  
See the following pages for more information!



### Lieferung & Zahlungsart

siehe unsere [Liefer- und Versandbedingungen](#)

### Zuschläge

- Mindermengenzuschlag
- Trockeneiszuschlag
- Gefahrgutzuschlag
- Expressversand

### SZABO-SCANDIC HandelsgmbH

Quellenstraße 110, A-1100 Wien

T. +43(0)1 489 3961-0

F. +43(0)1 489 3961-7

[mail@szabo-scandic.com](mailto:mail@szabo-scandic.com)

[www.szabo-scandic.com](http://www.szabo-scandic.com)

[linkedin.com/company/szaboscandic](https://www.linkedin.com/company/szaboscandic) 

# REL T (h2): 293T Lysate: sc-159793

## BACKGROUND

REL T (receptor expressed in lymphoid tissues), also known as tumor necrosis factor receptor superfamily member 19L (TNFRSF19L), is a transmembrane glycoprotein. It is expressed in thymus, spleen, testis, colon, skeletal muscle and peripheral blood lymphocytes. REL T contains two cysteine rich domains (although one is incomplete) and does not contain the death domain that is present in some of the TNFR family members. Unlike the other family members that also lack the death domain, REL T does not bind the TRAF adaptor proteins. REL T binds and is phosphorylated by SPAK. This interaction is required for the activation of p38 and JNK signaling. REL T also interacts with, and is phosphorylated by, OSR1 kinase. In addition, REL T may be involved in T cell activation. The overexpression of REL T induces phosphorylation of c-Jun and ATF-2. This implies the activation of the JNK and p38 signaling cascades.

## REFERENCES

1. Sica, G.L., Zhu, G., Tamada, K., Liu, D., Ni, J. and Chen, L. 2001. REL T, a new member of the tumor necrosis factor receptor superfamily, is selectively expressed in hematopoietic tissues and activates transcription factor NF- $\kappa$ B. *Blood* 97: 2702-2707.
2. Zhang, G. 2004. Tumor necrosis factor family ligand-receptor binding. *Curr. Opin. Struct. Biol.* 14: 154-160.
3. Foster, D., Parrish-Novak, J., Fox, B. and Xu, W. 2004. Cytokine-receptor pairing: accelerating discovery of cytokine function. *Nat. Rev. Drug Discov.* 3: 160-170.
4. Cusick, J.K., Xu, L.G., Bin, L.H., Han, K.J. and Shu, H.B. 2006. Identification of REL T homologues that associate with REL T and are phosphorylated by OSR1. *Biochem. Biophys. Res. Commun.* 340: 535-543.
5. Polek, T.C., Talpaz, M. and Spivak-Kroizman, T. 2006. The TNF receptor, REL T, binds SPAK and uses it to mediate p38 and JNK activation. *Biochem. Biophys. Res. Commun.* 343: 125-134.
6. Polek, T.C., Talpaz, M. and Spivak-Kroizman, T.R. 2006. TRAIL-induced cleavage and inactivation of SPAK sensitizes cells to apoptosis. *Biochem. Biophys. Res. Commun.* 349: 1016-1024.
7. Bossen, C., Ingold, K., Tardivel, A., Bodmer, J.L., Gaide, O., Hertig, S., Ambrose, C., Tschopp, J. and Schneider, P. 2006. Interactions of tumor necrosis factor (TNF) and TNF receptor family members in the mouse and human. *J. Biol. Chem.* 281: 13964-13971.

## CHROMOSOMAL LOCATION

Genetic locus: REL T (human) mapping to 11q13.4.

## PRODUCT

REL T (h2): 293T Lysate represents a lysate of human REL T transfected 293T cells and is provided as 100  $\mu$ g protein in 200  $\mu$ l SDS-PAGE buffer.

## STORAGE

Store at -20 $^{\circ}$  C. Repeated freezing and thawing should be minimized. Sample vial should be boiled once prior to use. Non-hazardous. No MSDS required.

## APPLICATIONS

REL T (h2): 293T Lysate is suitable as a Western Blotting positive control for human reactive REL T antibodies. Recommended use: 10-20  $\mu$ l per lane.

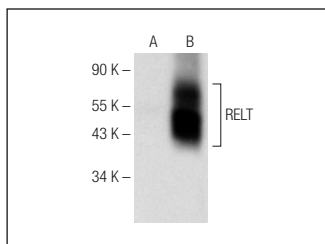
Control 293T Lysate: sc-117752 is available as a Western Blotting negative control lysate derived from non-transfected 293T cells.

REL T (C-6): sc-373942 is recommended as a positive control antibody for Western Blot analysis of enhanced human REL T expression in REL T transfected 293T cells (starting dilution 1:100, dilution range 1:100-1:1,000).

## RECOMMENDED SUPPORT REAGENTS

To ensure optimal results, the following support reagents are recommended:  
 1) Western Blotting: use m-IgG $\kappa$  BP-HRP: sc-516102 or m-IgG $\kappa$  BP-HRP (Cruz Marker): sc-516102-CM (dilution range: 1:1000-1:10000), Cruz Marker<sup>TM</sup> Molecular Weight Standards: sc-2035, UltraCruz<sup>®</sup> Blocking Reagent: sc-516214 and Western Blotting Luminol Reagent: sc-2048.

## DATA



REL T (C-6): sc-373942. Western blot analysis of REL T expression in non-transfected: sc-117752 (A) and human REL T transfected: sc-159793 (B) 293T whole cell lysates.

## RESEARCH USE

For research use only, not for use in diagnostic procedures.

## PROTOCOLS

See our web site at [www.scbt.com](http://www.scbt.com) for detailed protocols and support products.