



SZABO SCANDIC

Part of Europa Biosite

Produktinformation



Forschungsprodukte & Biochemikalien



Zellkultur & Verbrauchsmaterial



Diagnostik & molekulare Diagnostik



Laborgeräte & Service

Weitere Information auf den folgenden Seiten!
See the following pages for more information!



Lieferung & Zahlungsart

siehe unsere [Liefer- und Versandbedingungen](#)

Zuschläge

- Mindermengenzuschlag
- Trockeneiszuschlag
- Gefahrgutzuschlag
- Expressversand

SZABO-SCANDIC HandelsgmbH

Quellenstraße 110, A-1100 Wien

T. +43(0)1 489 3961-0

F. +43(0)1 489 3961-7

mail@szabo-scandic.com

www.szabo-scandic.com

[linkedin.com/company/szaboscandic](https://www.linkedin.com/company/szaboscandic) 

Langerin (h): 293 Lysate: sc-159824

BACKGROUND

Langerhans cells (LCs) are a subset of immature dendritic cells (DCs) that specifically localize in the epidermis and other mucosal epithelia. Epidermal LCs possess strong immunostimulatory capacity and play a central role in the initiation and regulation of immune responses. Langerin (CD207) is a Ca²⁺-dependent, C-type lectin domain-containing, type II transmembrane protein that induces epidermal LCs to differentiate into Birbeck granules (BG). BGs are organelles with superimposing and zippering membranes that influence proper class I type antigen presentation to the circulating T cells. Human spleen, lymph node, thymus, liver, lung and heart express Langerin protein. The human Langerin gene maps to chromosome 2p13.3 and encodes a 328 amino acid protein.

REFERENCES

- Valladeau, J., et al. 1999. The monoclonal antibody DCGM4 recognizes Langerin, a protein specific of Langerhans cells, and is rapidly internalized from the cell surface. *Eur. J. Immunol.* 29: 2695-2704.
- Valladeau, J., et al. 2000. Langerin, a novel C-type lectin specific to Langerhans cells, is an endocytic receptor that induces the formation of Birbeck granules. *Immunity* 12: 71-81.
- Mohamadzadeh, M., et al. 2001. Interleukin 15 skews monocyte differentiation into dendritic cells with features of Langerhans cells. *J. Exp. Med.* 194: 1013-1020.
- Larregina, A.T., et al. 2001. Dermal-resident CD14⁺ cells differentiate into Langerhans cells. *Nat. Immunol.* 2: 1151-1158.
- Valladeau, J., et al. 2002. Identification of mouse Langerin/CD207 in Langerhans cells and some dendritic cells of lymphoid tissues. *J. Immunol.* 168: 782-792.
- Takahara, K., et al. 2002. Identification and expression of mouse Langerin (CD207) in dendritic cells. *Int. Immunol.* 14: 433-444.
- Online Mendelian Inheritance in Man, OMIM™. 2002. Johns Hopkins University, Baltimore, MD. MIM Number: 604862. World Wide Web URL: <http://www.ncbi.nlm.nih.gov/omim/>
- LocusLink Report (LocusID: 2243). <http://www.ncbi.nlm.nih.gov/LocusLink/>

CHROMOSOMAL LOCATION

Genetic locus: CD207 (human) mapping to 2p13.3.

PRODUCT

Langerin (h): 293 Lysate represents a lysate of human Langerin transfected 293 cells and is provided as 100 µg protein in 200 µl SDS-PAGE buffer.

STORAGE

Store at -20° C. Repeated freezing and thawing should be minimized. Sample vial should be boiled once prior to use. Non-hazardous. No MSDS required.

RESEARCH USE

For research use only, not for use in diagnostic procedures.

APPLICATIONS

Langerin (h): 293 Lysate is suitable as a Western Blotting positive control for human reactive Langerin antibodies. Recommended use: 10-20 µl per lane.

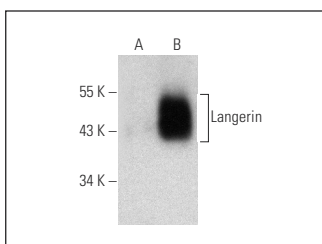
Control 293 Lysate: sc-110760 is available as a Western Blotting negative control lysate derived from non-transfected 293 cells.

Langerin (H-4): sc-271272 is recommended as a positive control antibody for Western Blot analysis of enhanced human Langerin expression in Langerin transfected 293 cells (starting dilution 1:100, dilution range 1:100-1:1,000).

RECOMMENDED SUPPORT REAGENTS

To ensure optimal results, the following support reagents are recommended:
 1) Western Blotting: use m-IgGκ BP-HRP: sc-516102 or m-IgGκ BP-HRP (Cruz Marker): sc-516102-CM (dilution range: 1:1000-1:10000), Cruz Marker™ Molecular Weight Standards: sc-2035, UltraCruz® Blocking Reagent: sc-516214 and Western Blotting Luminol Reagent: sc-2048.

DATA



Langerin (H-4): sc-271272. Western blot analysis of Langerin expression in non-transfected: sc-110760 (A) and human Langerin transfected: sc-159824 (B) 293 whole cell lysates.

PROTOCOLS

See our web site at www.scbt.com for detailed protocols and support products.