



SZABO SCANDIC

Part of Europa Biosite

Produktinformation



Forschungsprodukte & Biochemikalien



Zellkultur & Verbrauchsmaterial



Diagnostik & molekulare Diagnostik



Laborgeräte & Service

Weitere Information auf den folgenden Seiten!
See the following pages for more information!



Lieferung & Zahlungsart

siehe unsere [Liefer- und Versandbedingungen](#)

Zuschläge

- Mindermengenzuschlag
- Trockeneiszuschlag
- Gefahrgutzuschlag
- Expressversand

SZABO-SCANDIC HandelsgmbH

Quellenstraße 110, A-1100 Wien

T. +43(0)1 489 3961-0

F. +43(0)1 489 3961-7

mail@szabo-scandic.com

www.szabo-scandic.com

[linkedin.com/company/szaboscandic](https://www.linkedin.com/company/szaboscandic) 

ROR γ (h4): 293T Lysate: sc-170038

BACKGROUND

The nuclear orphan receptors ROR α and ROR γ are members of the nuclear hormone receptor superfamily. This family acts by directly associating with DNA sequences known as hormone response elements (HREs) and typically bind DNA as either homo- or heterodimers. ROR α and ROR γ are unique in that they bind DNA as monomers. ROR α has multiple isoforms that share common DNA and putative ligand-binding domains, but differ in their amino terminal domains, which are generated by alternative RNA processing. ROR γ comprises a 560 amino acid protein that shares 50% amino acid identity with ROR α and is most highly expressed in skeletal muscle. Although these proteins are considered "orphan receptors", due to a lack of defined ligands, experimental evidence has shown that melatonin may be the natural ligand for these nuclear receptors. The gene encoding ROR α maps to chromosome 15q22.2 and the gene encoding ROR γ maps to chromosome 1q21.3.

REFERENCES

- Giguere, V., Tini, M., Flock, G., Ong, E., Evans, R.M. and Otulakowski, G. 1994. Isoform-specific amino-terminal domains dictate DNA-binding properties of ROR α , a novel family of orphan hormone nuclear receptors. *Genes Dev.* 8: 538-543.
- Hirose, T., Smith, R.J. and Jetten, A.M. 1994. ROR γ : the third member of ROR/RZR orphan receptor subfamily that is highly expressed in skeletal muscle. *Biochem. Biophys. Res. Commun.* 205: 1976-1983.
- Mangelsdorf, D.J., Thummel, C., Beato, M., Herrlich, P., Schütz, G., Umesono, K., Blumberg, B., Kastner, P., Mark, M., Chambon, P. and Evans, R.M. 1995. The nuclear receptor superfamily: the second decade. *Cell* 83: 835-839.
- Leblanc, B.P. and Stunnenberg, H.G. 1995. 9-*cis* retinoic acid signaling: changing partners causes some excitement. *Genes Dev.* 9: 1811-1816.
- Mangelsdorf, D.J. and Evans, R.M. 1995. The RXR heterodimers and orphan receptors. *Cell* 83: 841-850.
- Carlberg, C. and Wiesenberger, I. 1995. The orphan receptor family RZR/ROR, melatonin and 5-lipoxygenase: an unexpected relationship. *J. Pineal Res.* 18: 171-178.
- Gawlas, K. and Stunnenberg, H.G. 2000. Differential binding and transcriptional behaviour of two highly related orphan receptors, ROR α_4 and ROR β_1 . *Biochim. Biophys. Acta* 1494: 236-241.

CHROMOSOMAL LOCATION

Genetic locus: RORC (human) mapping to 1q21.3.

PRODUCT

ROR γ (h4): 293T Lysate represents a lysate of human ROR γ transfected 293T cells and is provided as 100 μ g protein in 200 μ l SDS-PAGE buffer.

STORAGE

Store at -20° C. Repeated freezing and thawing should be minimized. Sample vial should be boiled once prior to use. Non-hazardous. No MSDS required.

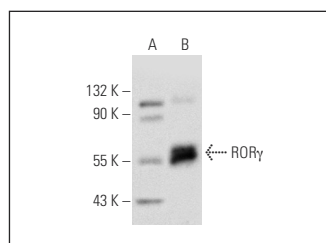
APPLICATIONS

ROR γ (h4): 293T Lysate is suitable as a Western Blotting positive control for human reactive ROR γ antibodies. Recommended use: 10-20 μ l per lane.

Control 293T Lysate: sc-117752 is available as a Western Blotting negative control lysate derived from non-transfected 293T cells.

ROR γ (162C2a): sc-81371 is recommended as a positive control antibody for Western Blot analysis of enhanced human ROR γ expression in ROR γ transfected 293T cells (starting dilution 1:100, dilution range 1:100-1:1,000).

DATA



ROR γ (162C2a): sc-81371. Western blot analysis of ROR γ expression in non-transfected: sc-117752 (A) and human ROR γ transfected: sc-170038 (B) 293T whole cell lysates.

RESEARCH USE

For research use only, not for use in diagnostic procedures.

PROTOCOLS

See our web site at www.scbt.com for detailed protocols and support products.