



SZABO SCANDIC

Part of Europa Biosite

Produktinformation



Forschungsprodukte & Biochemikalien



Zellkultur & Verbrauchsmaterial



Diagnostik & molekulare Diagnostik



Laborgeräte & Service

Weitere Information auf den folgenden Seiten!
See the following pages for more information!



Lieferung & Zahlungsart

siehe unsere [Liefer- und Versandbedingungen](#)

Zuschläge

- Mindermengenzuschlag
- Trockeneiszuschlag
- Gefahrgutzuschlag
- Expressversand

SZABO-SCANDIC HandelsgmbH

Quellenstraße 110, A-1100 Wien

T. +43(0)1 489 3961-0

F. +43(0)1 489 3961-7

mail@szabo-scandic.com

www.szabo-scandic.com

[linkedin.com/company/szaboscandic](https://www.linkedin.com/company/szaboscandic) 

Optineurin (h2): 293T Lysate: sc-170133

BACKGROUND

Optineurin, also designated FIP2, E3-14.7K-interacting protein, HYPL, transcription factor IIIA-interacting protein (TFIIIA-INTP), Huntingtin interacting protein L and NEMO-related protein, influences cell morphogenesis, membrane trafficking, vesicle trafficking and transcription activation through its interactions with the Rab8, Huntingtin and transcription factor IIIA proteins. Optineurin interacts with Adenovirus E3-14.7K protein and may utilize TNF α or FAS-ligand pathways to mediate apoptosis, inflammation or vasoconstriction. Optineurin mutations may impart normal-tension glaucoma and adult-onset primary open angle glaucoma. Optineurin is a 617 amino acid protein that contains leucine zippers and leucine-rich regions, and contains a potential Cys₂-His-Cys zinc finger at residues 553-582. It localizes to the Golgi apparatus. RT-PCR studies indicate expression in human trabecular meshwork, nonpigmented ciliary epithelium, retina, brain, adrenal cortex, liver, fetus, lymphocyte and fibroblast. Northern blot studies indicate a 2.0 kb transcript in human trabecular meshwork and nonpigmented ciliary epithelium and a minor 3.6 kb transcript.

REFERENCES

1. Online Mendelian Inheritance in Man, OMIM™. 2002. Johns Hopkins University, Baltimore, MD. MIM Number: 602432. World Wide Web URL: <http://www.ncbi.nlm.nih.gov/omim/>
2. Rezaie, T., et al. 2005. Molecular cloning and expression profiling of Optineurin in the rhesus monkey. *Invest. Ophthalmol. Vis. Sci.* 46: 2404-2410.
3. Aung, T., et al. 2005. Clinical features and course of patients with glaucoma with the E50K mutation in the Optineurin gene. *Invest. Ophthalmol. Vis. Sci.* 46: 2816-2822.
4. Jansson, M., et al. 2005. Analysis of rare variants and common haplotypes in the Optineurin gene in Swedish glaucoma cases. *Ophthalmic Genet.* 26: 85-89.
5. Rezaie, T., et al. 2005. Molecular cloning, genomic structure and protein characterization of mouse Optineurin. *Genomics* 85: 131-138.
6. Sahlender, D.A., et al. 2005. Optineurin links Myosin VI to the Golgi complex and is involved in Golgi organization and exocytosis. *J. Cell Biol.* 169: 285-295.
7. De Marco, N., et al. 2006. Optineurin increases cell survival and translocates to the nucleus in a Rab 8-dependent manner upon an apoptotic stimulus. *J. Biol. Chem.* 281: 16147-16156.
8. Yao, H.Y., et al. 2006. Polymorphisms of myocilin and Optineurin in primary open angle glaucoma patients. *Zhonghua Yi Xue Za Zhi* 86: 554-559.
9. Yasuda, N., et al. 2006. Low penetrance of His26Asp mutation in the Optineurin gene in a Japanese family with normal-tension glaucoma. *Nippon Ganka Gakkai Zasshi* 110: 594-600.

CHROMOSOMAL LOCATION

Genetic locus: OPTN (human) mapping to 10p13.

RESEARCH USE

For research use only, not for use in diagnostic procedures.

PRODUCT

Optineurin (h2): 293T Lysate represents a lysate of human Optineurin transfected 293T cells and is provided as 100 μ g protein in 200 μ l SDS-PAGE buffer.

APPLICATIONS

Optineurin (h2): 293T Lysate is suitable as a Western Blotting positive control for human reactive Optineurin antibodies.

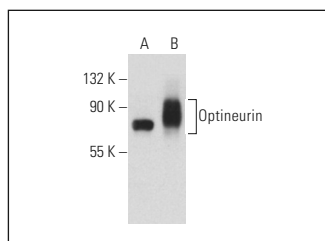
Control 293T Lysate: sc-117752 is available as a Western Blotting negative control lysate derived from non-transfected 293T cells.

Optineurin (C-2): sc-166576 is recommended as a positive control antibody for Western Blot analysis of enhanced human Optineurin expression in Optineurin transfected 293T cells (starting dilution 1:100, dilution range 1:100-1:1,000).

RECOMMENDED SUPPORT REAGENTS

To ensure optimal results, the following support reagents are recommended:
1) Western Blotting: use m-IgG κ BP-HRP: sc-516102 or m-IgG κ BP-HRP (Cruz Marker): sc-516102-CM (dilution range: 1:1000-1:10000), Cruz Marker™ Molecular Weight Standards: sc-2035, UltraCruz® Blocking Reagent: sc-516214 and Western Blotting Luminol Reagent: sc-2048.

DATA



Optineurin (C-2): sc-166576. Western blot analysis of Optineurin expression in non-transfected: sc-117752 (A) and human Optineurin transfected: sc-170133 (B) 293T whole cell lysates.

STORAGE

Store at -20° C. Repeated freezing and thawing should be minimized. Sample vial should be boiled once prior to use. Non-hazardous. No MSDS required.

PROTOCOLS

See our web site at www.scbt.com for detailed protocols and support products.