



# SZABO SCANDIC

Part of Europa Biosite

## Produktinformation



Forschungsprodukte & Biochemikalien



Zellkultur & Verbrauchsmaterial



Diagnostik & molekulare Diagnostik



Laborgeräte & Service

Weitere Information auf den folgenden Seiten!  
See the following pages for more information!



### Lieferung & Zahlungsart

siehe unsere [Liefer- und Versandbedingungen](#)

### Zuschläge

- Mindermengenzuschlag
- Trockeneiszuschlag
- Gefahrgutzuschlag
- Expressversand

### SZABO-SCANDIC HandelsgmbH

Quellenstraße 110, A-1100 Wien

T. +43(0)1 489 3961-0

F. +43(0)1 489 3961-7

[mail@szabo-scandic.com](mailto:mail@szabo-scandic.com)

[www.szabo-scandic.com](http://www.szabo-scandic.com)

[linkedin.com/company/szaboscandic](https://www.linkedin.com/company/szaboscandic) 

# KID (h3): 293T Lysate: sc-170134

## BACKGROUND

KID (kinesin-like DNA-binding protein) is a nuclear protein that belongs to the kinesin-like protein family. KID is involved in spindle formation and the movements of chromosomes during mitosis and meiosis by binding to microtubules in addition to DNA. The N-terminal half of KID contains the kinesin-like motor domain; there is a helix-hairpin-helix DNA-binding domain at its C-terminus. It has been reported that the subcellular localization of KID changes dramatically during cell division.

## REFERENCES

1. Tokai, N., Fujimoto-Nishiyama, A., Toyoshima, Y., Yonemura, S., Tsukita, S., Inoue, J. and Yamamoto, T. 1996. KID, a novel kinesin-like DNA binding protein, is localized to chromosomes and the mitotic spindle. *EMBO J.* 15: 457-467.
2. Song, J., Murakami, H., Yang, Z.Q., Koga, C., Adati, N., Murata, T., Geltinger, C., Saito-Ohara, F., Ikeuchi, T., Matsumura, M., Itakura, K., Kanazawa, I., Sun, K. and Yokoyama, K.K. 1998. Human genes for KNSL4 and MAZ are located close to one another on chromosome 16p11.2. *Genomics* 52: 374-377.
3. Germani, A., Bruzzoni-Giovanelli, H., Fellous, A., Gisselbrecht, S., Varin-Blank, N. and Calvo, F. 2000. SIAH-1 interacts with  $\alpha$  Tubulin and degrades the kinesin KID by the proteasome pathway during mitosis. *Oncogene* 19: 5997-6006.
4. Funabiki, H. and Murray, A.W. 2000. The *Xenopus* chromokinesin Xkid is essential for metaphase chromosome alignment and must be degraded to allow anaphase chromosome movement. *Cell* 102: 411-424.
5. Yajima, J., Edamatsu, M., Watai-Nishii, J., Tokai-Nishizumi, N., Yamamoto, T. and Toyoshima, Y.Y. 2003. The human chromokinesin KID is a plus end-directed microtubule-based motor. *EMBO J.* 22: 1067-1074.
6. Shiroguchi, K., Ohsugi, M., Edamatsu, M., Yamamoto, T. and Toyoshima, Y.Y. 2003. The second microtubule-binding site of monomeric KID enhances the microtubule affinity. *J. Biol. Chem.* 278: 22460-22465.
7. Tahara, K., Takagi, M., Ohsugi, M., Sone, T., Nishiumi, F., Maeshima, K., Horiuchi, Y., Tokai-Nishizumi, N., Imamoto, F., Yamamoto, T., Kose, S. and Imamoto, N. 2008. Importin  $\beta$  and the small guanosine triphosphatase Ran mediate chromosome loading of the human chromokinesin Kid. *J. Cell Biol.* 180: 493-506.
8. SWISS-PROT/TrEMBL (Q14807). World Wide Web URL: <http://www.expasy.ch/sprot/sprot-top.html>

## CHROMOSOMAL LOCATION

Genetic locus: KIF22 (human) mapping to 16p11.2.

## PRODUCT

KID (h3): 293T Lysate represents a lysate of human KID transfected 293T cells and is provided as 100  $\mu$ g protein in 200  $\mu$ l SDS-PAGE buffer.

## RESEARCH USE

For research use only, not for use in diagnostic procedures.

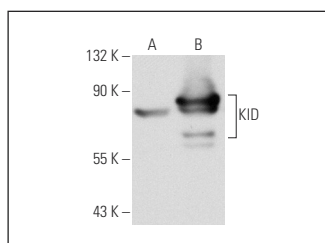
## APPLICATIONS

KID (h3): 293T Lysate is suitable as a Western Blotting positive control for human reactive KID antibodies.

Control 293T Lysate: sc-117752 is available as a Western Blotting negative control lysate derived from non-transfected 293T cells.

KID (2486C3a): sc-130645 is recommended as a positive control antibody for Western Blot analysis of enhanced human KID expression in KID transfected 293T cells (starting dilution 1:100, dilution range 1:100-1:1,000).

## DATA



KID (2486C3a): sc-130645. Western blot analysis of KID expression in non-transfected: sc-117752 (A) and human KID transfected: sc-170134 (B) 293T whole cell lysates.

## STORAGE

Store at -20° C. Repeated freezing and thawing should be minimized. Sample vial should be boiled once prior to use. Non-hazardous. No MSDS required.

## PROTOCOLS

See our web site at [www.scbt.com](http://www.scbt.com) for detailed protocols and support products.