



SZABO SCANDIC

Part of Europa Biosite

Produktinformation



Forschungsprodukte & Biochemikalien



Zellkultur & Verbrauchsmaterial



Diagnostik & molekulare Diagnostik



Laborgeräte & Service

Weitere Information auf den folgenden Seiten!
See the following pages for more information!



Lieferung & Zahlungsart

siehe unsere [Liefer- und Versandbedingungen](#)

Zuschläge

- Mindermengenzuschlag
- Trockeneiszuschlag
- Gefahrgutzuschlag
- Expressversand

SZABO-SCANDIC HandelsgmbH

Quellenstraße 110, A-1100 Wien

T. +43(0)1 489 3961-0

F. +43(0)1 489 3961-7

mail@szabo-scandic.com

www.szabo-scandic.com

[linkedin.com/company/szaboscandic](https://www.linkedin.com/company/szaboscandic) 

α Enolase (h3): 293T Lysate: sc-170218

BACKGROUND

Enolases have been characterized as highly conserved cytoplasmic glycolytic enzymes that may be involved in differentiation. Three isoenzymes have been identified, α Enolase, β Enolase and γ Enolase. α Enolase expression has been detected on most tissues, whereas β Enolase is expressed predominantly in muscle tissue and γ Enolase is detected only in nervous tissue. These isoforms exist as both homodimers and heterodimers, and they play a role in converting phosphoglyceric acid to phosphoenolpyruvic acid in the glycolytic pathway.

REFERENCES

- Whitehead, M.C., et al. 1982. Synapse formation is related to the onset of neuron-specific enolase immunoreactivity in the avian auditory and vestibular systems. *Dev. Neurosci.* 5: 298-307.
- Verma, M., et al. 1994. DNA sequences encoding Enolase are remarkably conserved from yeast to mammals. *Life Sci.* 55: 893-899.
- Keller, A., et al. 1994. Coexpression of α and γ Enolase genes in neurons of adult rat brain. *J. Neurosci. Res.* 38: 493-504.
- Zhang, E., et al. 1997. Mechanism of Enolase: the crystal structure of asymmetric dimer Enolase-2-phospho-D glycerate/Enolase-phosphoenolpyruvate at 2.0 Å resolution. *Biochemistry* 36: 12526-12534.
- Deloulme, J.C., et al. 1997. A comparative study of the distribution of α and γ Enolase subunits in cultured rat neural cells and fibroblasts. *Int. J. Dev. Neurosci.* 15: 183-194.
- Sensenbrenner, M., et al. 1997. Expression of two neuronal markers, growth-associated protein 43 and neuron-specific Enolase, in rat glial cells. *J. Mol. Med.* 75: 653-663.
- Ito, S., et al. 2007. Differential expression of the human α Enolase gene in oral epithelium and squamous cell carcinoma. *Cancer Sci.* 98: 499-505.
- Perconti, G., et al. 2007. The kelch protein NS1-BP interacts with α Enolase/Mbp1 and is involved in c-Myc gene transcriptional control. *Biochim. Biophys. Acta* 1773: 1774-1785.

CHROMOSOMAL LOCATION

Genetic locus: ENO1 (human) mapping to 1p36.23.

PRODUCT

α Enolase (h3): 293T Lysate represents a lysate of human α Enolase transfected 293T cells and is provided as 100 μ g protein in 200 μ l SDS-PAGE buffer.

STORAGE

Store at -20° C. Repeated freezing and thawing should be minimized. Sample vial should be boiled once prior to use. Non-hazardous. No MSDS required.

PROTOCOLS

See our web site at www.scbt.com for detailed protocols and support products.

APPLICATIONS

α Enolase (h3): 293T Lysate is suitable as a Western Blotting positive control for human reactive α Enolase antibodies. Recommended use: 10-20 μ l per lane.

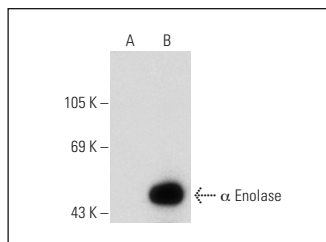
Control 293T Lysate: sc-117752 is available as a Western Blotting negative control lysate derived from non-transfected 293T cells.

Enolase (A-5): sc-271384 is recommended as a positive control antibody for Western Blot analysis of enhanced human α Enolase expression in α Enolase transfected 293T cells (starting dilution 1:100, dilution range 1:100-1:1,000).

RECOMMENDED SUPPORT REAGENTS

To ensure optimal results, the following support reagents are recommended:
 1) Western Blotting: use m-IgG κ BP-HRP: sc-516102 or m-IgG κ BP-HRP (Cruz Marker): sc-516102-CM (dilution range: 1:1000-1:10000), Cruz Marker™ Molecular Weight Standards: sc-2035, UltraCruz® Blocking Reagent: sc-516214 and Western Blotting Luminol Reagent: sc-2048.

DATA



Enolase (A-5): sc-271384. Western blot analysis of α Enolase expression in non-transfected: sc-117752 (A) and human α Enolase transfected: sc-170218 (B) 293T whole cell lysates.

RESEARCH USE

For research use only, not for use in diagnostic procedures.