



# SZABO SCANDIC

Part of Europa Biosite

## Produktinformation



Forschungsprodukte & Biochemikalien



Zellkultur & Verbrauchsmaterial



Diagnostik & molekulare Diagnostik



Laborgeräte & Service

Weitere Information auf den folgenden Seiten!  
See the following pages for more information!



### Lieferung & Zahlungsart

siehe unsere [Liefer- und Versandbedingungen](#)

### Zuschläge

- Mindermengenzuschlag
- Trockeneiszuschlag
- Gefahrgutzuschlag
- Expressversand

### SZABO-SCANDIC HandelsgmbH

Quellenstraße 110, A-1100 Wien

T. +43(0)1 489 3961-0

F. +43(0)1 489 3961-7

[mail@szabo-scandic.com](mailto:mail@szabo-scandic.com)

[www.szabo-scandic.com](http://www.szabo-scandic.com)

[linkedin.com/company/szaboscandic](https://www.linkedin.com/company/szaboscandic) 

# CTXL (h): 293T Lysate: sc-170295

## BACKGROUND

CTXL, also known as CTH (cortical thymocyte-like protein) or VSIG2 (V-set and immunoglobulin domain-containing protein 2), is a 327 amino acid single-pass type-I membrane protein that exists as two alternatively spliced isoforms, and contains one Ig-like C2-type (immunoglobulin-like) domain and one Ig-like V-type (immunoglobulin-like) domain. While highly expressed in stomach, colon, prostate, trachea and thyroid glands, CTXL is weakly expressed in bladder and lung. The gene that encodes CTXL consists of approximately 4,767 bases and maps to human chromosome 11q24.2. Chromosome 11 houses over 1,400 genes and comprises nearly 4% of the human genome. Jervell and Lange-Nielsen syndrome, Jacobsen syndrome, Niemann-Pick disease, hereditary angioedema and Smith-Lemli-Opitz syndrome are associated with defects in genes that map to chromosome 11.

## REFERENCES

- Chrétien, I., Marcuz, A., Courtet, M., Katevuo, K., Vainio, O., Heath, J.K., White, S.J. and Du Pasquier, L. 1998. CTX, a Xenopus thymocyte receptor, defines a molecular family conserved throughout vertebrates. *Eur. J. Immunol.* 28: 4094-4104.
- Fabiani, J.E., Avigliano, A., Dupont, J.C. and Fabiana, J.E. 2000. Hereditary angioedema. Long-term follow-up of 88 patients. Experience of the argentine allergy and immunology institute. *Allergol. Immunopathol.* 28: 267-271.
- Jira, P.E., Waterham, H.R., Wanders, R.J., Smeitink, J.A., Sengers, R.C. and Wevers, R.A. 2003. Smith-Lemli-Opitz syndrome and the DHCR7 gene. *Ann. Hum. Genet.* 67: 269-280.
- Schuchman, E.H. 2007. The pathogenesis and treatment of acid sphingomyelinase-deficient Niemann-Pick disease. *J. Inherit. Metab. Dis.* 30: 654-663.
- Siem, G., Früh, A., Leren, T.P., Heimdal, K., Teig, E. and Harris, S. 2008. Jervell and Lange-Nielsen syndrome in Norwegian children: aspects around cochlear implantation, hearing, and balance. *Ear Hear.* 29: 261-269.
- Bhuiyan, Z.A., Momenah, T.S., Amin, A.S., Al-Khadra, A.S., Alders, M., Wilde, A.A. and Mannens, M.M. 2008. An intronic mutation leading to incomplete skipping of exon-2 in KCNQ1 rescues hearing in Jervell and Lange-Nielsen syndrome. *Prog. Biophys. Mol. Biol.* 98: 319-327.
- Coldren, C.D., Lai, Z., Shragg, P., Rossi, E., Glidewell, S.C., Zuffardi, O., Mattina, T., Ivy, D.D., Curfs, L.M., Mattson, S.N., Riley, E.P., Treier, M. and Grossfeld, P.D. 2009. Chromosomal microarray mapping suggests a role for BSX and Neurogranin in neurocognitive and behavioral defects in the 11q terminal deletion disorder (Jacobsen syndrome). *Neurogenetics* 10: 89-95.

## CHROMOSOMAL LOCATION

Genetic locus: VSIG2 (human) mapping to 11q24.2.

## PRODUCT

CTXL (h): 293T Lysate represents a lysate of human CTXL transfected 293T cells and is provided as 100 µg protein in 200 µl SDS-PAGE buffer.

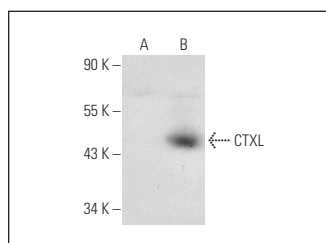
## APPLICATIONS

CTXL (h): 293T Lysate is suitable as a Western Blotting positive control for human reactive CTXL antibodies. Recommended use: 10-20 µl per lane.

Control 293T Lysate: sc-117752 is available as a Western Blotting negative control lysate derived from non-transfected 293T cells.

CTXL (IC0-44): sc-52391 is recommended as a positive control antibody for Western Blot analysis of enhanced human CTXL expression in CTXL transfected 293T cells (starting dilution 1:100, dilution range 1:100-1:1,000).

## DATA



CTXL (IC0-44): sc-52391. Western blot analysis of CTXL expression in non-transfected: sc-117752 (A) and human CTXL transfected: sc-170295 (B) 293T whole cell lysates.

## STORAGE

Store at -20° C. Repeated freezing and thawing should be minimized. Sample vial should be boiled once prior to use. Non-hazardous. No MSDS required.

## RESEARCH USE

For research use only, not for use in diagnostic procedures.

## PROTOCOLS

See our web site at [www.scbt.com](http://www.scbt.com) for detailed protocols and support products.