



SZABO SCANDIC

Part of Europa Biosite

Produktinformation



Forschungsprodukte & Biochemikalien



Zellkultur & Verbrauchsmaterial



Diagnostik & molekulare Diagnostik



Laborgeräte & Service

Weitere Information auf den folgenden Seiten!
See the following pages for more information!



Lieferung & Zahlungsart

siehe unsere [Liefer- und Versandbedingungen](#)

Zuschläge

- Mindermengenzuschlag
- Trockeneiszuschlag
- Gefahrgutzuschlag
- Expressversand

SZABO-SCANDIC HandelsgmbH

Quellenstraße 110, A-1100 Wien

T. +43(0)1 489 3961-0

F. +43(0)1 489 3961-7

mail@szabo-scandic.com

www.szabo-scandic.com

[linkedin.com/company/szaboscandic](https://www.linkedin.com/company/szaboscandic) 

adseverin (h2): 293T Lysate: sc-170369

BACKGROUND

Adseverin (ADSV), also known as scinderin (SCIN), is a 715 amino acid protein belonging to the Villin/Gelsolin family. Adseverin is a Ca^{2+} -dependent Actin filament-severing protein localized to the cytoskeleton. Adseverin is believed to have a regulatory roll in exocytosis by altering the organization of the microfilament network underneath the plasma membrane. *In vitro*, adseverin has barbed end capping and nucleating activities in the presence of Ca^{2+} . Adseverin contains six Gelsolin-like repeats and is expressed as two isoforms produced by alternative splicing.

REFERENCES

- Rodríguez Del Castillo, A., et al. 1992. Ca^{2+} and pH determine the interaction of chromaffin cell scinderin with phosphatidylserine and phosphatidylinositol 4,5-bisphosphate and its cellular distribution during nicotinic-receptor stimulation and protein kinase C activation. *J. Cell Biol.* 119: 797-810.
- Rodríguez Del Castillo, A., et al. 1992. Human platelets contain scinderin, a Ca^{2+} -dependent Actin filament-severing protein. *Thromb. Haemost.* 67: 248-251.
- Lueck, A., et al. 1998. The Actin-binding proteins adseverin and Gelsolin are both highly expressed but differentially localized in kidney and intestine. *J. Cell. Sci.* 111: 3633-3643.
- Zunino, R., et al. 2001. Expression of scinderin in megakaryoblastic leukemia cells induces differentiation, maturation, and apoptosis with release of plateletlike particles and inhibits proliferation and tumorigenesis. *Blood* 98: 2210-2219.
- Lejen, T., et al. 2002. The role of different scinderin domains in the control of F-Actin cytoskeleton during exocytosis. *Ann. N.Y. Acad. Sci.* 971: 248-250.
- Ehre, C., et al. 2005. Barrier role of Actin filaments in regulated mucin secretion from airway goblet cells. *Am. J. Physiol. Cell Physiol.* 288: C46-C56.
- Abouzahr, S., et al. 2006. Identification of target Actin content and polymerization status as a mechanism of tumor resistance after cytolytic T lymphocyte pressure. *Proc. Natl. Acad. Sci. USA* 103: 1428-1433.
- Nurminsky, D., et al. 2007. Regulation of chondrocyte differentiation by Actin-severing protein adseverin. *Dev. Biol.* 302: 427-437.
- Jia, S., et al. 2007. Duplicated Gelsolin family genes in zebrafish: a novel scinderin-like gene (scinla) encodes the major corneal crystallin. *FASEB J.* 21: 3318-3328.

CHROMOSOMAL LOCATION

Genetic locus: SCIN (human) mapping to 7p21.3.

PRODUCT

adseverin (h2): 293T Lysate represents a lysate of human adseverin transfected 293T cells and is provided as 100 µg protein in 200 µl SDS-PAGE buffer.

RESEARCH USE

For research use only, not for use in diagnostic procedures.

APPLICATIONS

adseverin (h2): 293T Lysate is suitable as a Western Blotting positive control for human reactive adseverin antibodies. Recommended use: 10-20 µl per lane.

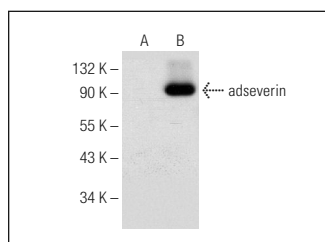
Control 293T Lysate: sc-117752 is available as a Western Blotting negative control lysate derived from non-transfected 293T cells.

adseverin (C-2): sc-376136 is recommended as a positive control antibody for Western Blot analysis of enhanced human adseverin expression in adseverin transfected 293T cells (starting dilution 1:100, dilution range 1:100-1:1,000).

RECOMMENDED SUPPORT REAGENTS

To ensure optimal results, the following support reagents are recommended: 1) Western Blotting: use m-IgGκ BP-HRP: sc-516102 or m-IgGκ BP-HRP (Cruz Marker): sc-516102-CM (dilution range: 1:1000-1:10000), Cruz Marker™ Molecular Weight Standards: sc-2035, UltraCruz® Blocking Reagent: sc-516214 and Western Blotting Luminol Reagent: sc-2048.

DATA



adseverin (C-2): sc-376136. Western blot analysis of adseverin expression in non-transfected: sc-117752 (A) and human adseverin transfected: sc-170369 (B) 293T whole cell lysates.

STORAGE

Store at -20° C. Repeated freezing and thawing should be minimized. Sample vial should be boiled once prior to use. Non-hazardous. No MSDS required.

PROTOCOLS

See our web site at www.scbt.com for detailed protocols and support products.