



SZABO SCANDIC

Part of Europa Biosite

Produktinformation



Forschungsprodukte & Biochemikalien



Zellkultur & Verbrauchsmaterial



Diagnostik & molekulare Diagnostik



Laborgeräte & Service

Weitere Information auf den folgenden Seiten!
See the following pages for more information!



Lieferung & Zahlungsart

siehe unsere [Liefer- und Versandbedingungen](#)

Zuschläge

- Mindermengenzuschlag
- Trockeneiszuschlag
- Gefahrgutzuschlag
- Expressversand

SZABO-SCANDIC HandelsgmbH

Quellenstraße 110, A-1100 Wien

T. +43(0)1 489 3961-0

F. +43(0)1 489 3961-7

mail@szabo-scandic.com

www.szabo-scandic.com

[linkedin.com/company/szaboscandic](https://www.linkedin.com/company/szaboscandic) 

Calnexin (h3): 293T Lysate: sc-170477

BACKGROUND

Calnexin and Calregulin (also called calreticulin) are calcium-binding proteins that are localized to the endoplasmic reticulum, Calnexin to the membrane and Calregulin to the lumen. Calnexin is a type I membrane protein that interacts with newly synthesized glycoproteins in the endoplasmic reticulum. It may play a role in assisting with protein assembly and in retaining unassembled protein subunits in the endoplasmic reticulum. Calregulin has both low- and high-affinity calcium-binding sites. Neither Calnexin nor Calregulin contains the calcium-binding "E-F hand" motif found in calmodulins. Calnexin and Calregulin are important for the maturation of glycoproteins in the endoplasmic reticulum and appear to bind many of the same proteins.

REFERENCES

1. Smith, M.J. and Koch, G.L. 1989. Multiple zones in the sequence of calreticulin (CRP55, Calregulin, HACBP), a major calcium-binding ER/SR protein. *EMBO J.* 8: 3581-3586.
2. David, V., Hochstenbach, F., Rajagopalan, S. and Brenner, M.B. 1993. Interaction with newly synthesized and retained proteins in the endoplasmic reticulum suggests a chaperone function for human integral membrane protein IP90 (Calnexin). *J. Biol. Chem.* 268: 9585-9592.
3. Tjoelker, L.W., Seyfried, C.E., Eddy, R.L., Jr., Byers, M.G., Shows, T.B., Calderon, J., Schreiber, R.B. and Gray, P.W. 1994. Human, mouse and rat Calnexin cDNA cloning: identification of potential calcium-binding motifs and gene localization to human chromosome 5. *Biochemistry* 33: 3229-3236.
4. Breier, A. and Michalak, M. 1994. 2,4,6-trinitrobenzenesulfonic acid modification of the carboxyl-terminal region (C-domain) of calreticulin. *Mol. Cell. Biochem.* 130: 19-28.
5. Wada, I., Imai, S., Kai, M., Sakane, F. and Kanoh, H. 1995. Chaperone function of calreticulin when expressed in the endoplasmic reticulum as the membrane-anchored and soluble forms. *J. Biol. Chem.* 270: 20298-20304.
6. Williams, D.B. 1995. Calnexin: a molecular chaperone with a taste for carbohydrate. *Biochem. Cell Biol.* 73: 123-132.

CHROMOSOMAL LOCATION

Genetic locus: CANX (human) mapping to 5q35.3.

PRODUCT

Calnexin (h3): 293T Lysate represents a lysate of human Calnexin transfected 293T cells and is provided as 100 µg protein in 200 µl SDS-PAGE buffer.

APPLICATIONS

Calnexin (h3): 293T Lysate is suitable as a Western Blotting positive control for human reactive Calnexin antibodies. Recommended use: 10-20 µl per lane.

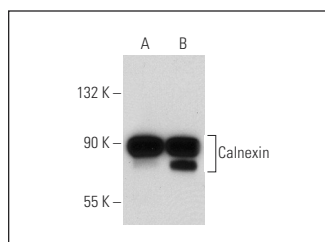
Control 293T Lysate: sc-117752 is available as a Western Blotting negative control lysate derived from non-transfected 293T cells.

Calnexin (AF18): sc-23954 is recommended as a positive control antibody for Western Blot analysis of enhanced human Calnexin expression in Calnexin transfected 293T cells (starting dilution 1:100, dilution range 1:100-1:1,000).

RECOMMENDED SUPPORT REAGENTS

To ensure optimal results, the following support reagents are recommended:
1) Western Blotting: use m-IgGκ BP-HRP: sc-516102 or m-IgGκ BP-HRP (Cruz Marker): sc-516102-CM (dilution range: 1:1000-1:10000), Cruz Marker™ Molecular Weight Standards: sc-2035, UltraCruz® Blocking Reagent: sc-516214 and Western Blotting Luminol Reagent: sc-2048.

DATA



Calnexin (AF18): sc-23954. Western blot analysis of Calnexin expression in non-transfected: sc-117752 (A) and human Calnexin transfected: sc-170477 (B) 293T whole cell lysates.

STORAGE

Store at -20° C. Repeated freezing and thawing should be minimized. Sample vial should be boiled once prior to use. Non-hazardous. No MSDS required.

RESEARCH USE

For research use only, not for use in diagnostic procedures.

PROTOCOLS

See our web site at www.scbt.com for detailed protocols and support products.