



SZABO SCANDIC

Part of Europa Biosite

Produktinformation



Forschungsprodukte & Biochemikalien



Zellkultur & Verbrauchsmaterial



Diagnostik & molekulare Diagnostik



Laborgeräte & Service

Weitere Information auf den folgenden Seiten!
See the following pages for more information!



Lieferung & Zahlungsart

siehe unsere [Liefer- und Versandbedingungen](#)

Zuschläge

- Mindermengenzuschlag
- Trockeneiszuschlag
- Gefahrgutzuschlag
- Expressversand

SZABO-SCANDIC HandelsgmbH

Quellenstraße 110, A-1100 Wien

T. +43(0)1 489 3961-0

F. +43(0)1 489 3961-7

mail@szabo-scandic.com

www.szabo-scandic.com

[linkedin.com/company/szaboscandic](https://www.linkedin.com/company/szaboscandic) 

Aldolase A (h2): 293T Lysate: sc-170532

BACKGROUND

Fructose 1,6-bisphosphate aldolase catalyses the reversible condensation of glyceraldehyde 3-phosphate into fructose 1,6-bisphosphate. Fructose 1,6-bisphosphate aldolase exists as three forms: the muscle-specific Aldolase A, the liver-specific Aldolase B, and the brain-specific Aldolase C. Aldolase A, B and C arose from a common ancestral gene from which Aldolase B first diverged. Aldolase A is one of the most highly-conserved enzymes known, with only about 2% of the residues changing per 100 million years. Aldolase B is regulated by the hormones Insulin and glucagon, and has been implicated in hereditary fructose intolerance disease. Aldolase C is a polypeptide that is exclusively expressed in Purkinje cells. Aldolase C-positive Purkinje cells are organized in the cerebellum as stripes or bands that run from anterior to posterior across the cerebellum and alternate with bands of Aldolase C-negative Purkinje cells.

REFERENCES

- Izzo, P., et al. 1988. Human Aldolase A gene. Structural organization and tissue-specific expression by multiple promoters and alternate mRNA processing. *Eur. J. Biochem.* 174: 569-578.
- Freemont, P.S., et al. 1988. The complete amino acid sequence of human skeletal muscle fructose-bisphosphate aldolase. *Biochem. J.* 249: 779-788.
- Caffe, A.R., et al. 1994. Distribution of Purkinje cell-specific zebirin-II/ Aldolase C immunoreactivity in the mouse, rat, rabbit and human retina. *J. Comp. Neurol.* 348: 291-297.
- Hawkes, R., et al. 1995. Aldolase C/zebrin II and the regionalization of the cerebellum. *J. Mol. Neurosci.* 6: 147-158.
- Lannoo, M.J., et al. 1997. A search for primitive Purkinje cells: zebirin II expression in sea lampreys (*Petromyzon marinus*). *Neurosci. Lett.* 237: 53-55.
- Walther, E.U., et al. 1998. Genomic sequences of Aldolase C (zebrin II) direct lacZ expression exclusively in non-neuronal cells of transgenic mice. *Proc. Natl. Acad. Sci. USA* 95: 2615-2620.
- Dehnes, Y., et al. 1998. The glutamate transporter EAAT4 in rat cerebellar Purkinje cells: a glutamate-gated chloride channel concentrated near the synapse in parts of the dendritic membrane facing astroglia. *J. Neurosci.* 18: 3606-3619.
- Eisenman, L.M., et al. 1998. Regionalization defects in the weaver mouse cerebellum. *J. Comp. Neurol.* 394: 431-444.
- Takano, Y., et al. 2000. Characterization of the responsive elements to hormones in the rat Aldolase B gene. *Arch. Biochem. Biophys.* 377: 58-64.

CHROMOSOMAL LOCATION

Genetic locus: ALDOA (human) mapping to 16p11.2.

PRODUCT

Aldolase A (h2): 293T Lysate represents a lysate of human Aldolase A transfected 293T cells and is provided as 100 µg protein in 200 µl SDS-PAGE buffer.

APPLICATIONS

Aldolase A (h2): 293T Lysate is suitable as a Western Blotting positive control for human reactive Aldolase A antibodies. Recommended use: 10-20 µl per lane.

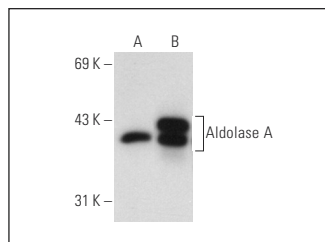
Control 293T Lysate: sc-117752 is available as a Western Blotting negative control lysate derived from non-transfected 293T cells.

Aldolase A (1F8): sc-53933 is recommended as a positive control antibody for Western Blot analysis of enhanced human Aldolase A expression in Aldolase A transfected 293T cells (starting dilution 1:100, dilution range 1:100-1:1,000).

RECOMMENDED SUPPORT REAGENTS

To ensure optimal results, the following support reagents are recommended: 1) Western Blotting: use m-IgGκ BP-HRP: sc-516102 or m-IgGκ BP-HRP (Cruz Marker): sc-516102-CM (dilution range: 1:1000-1:10000), Cruz Marker™ Molecular Weight Standards: sc-2035, UltraCruz® Blocking Reagent: sc-516214 and Western Blotting Luminol Reagent: sc-2048.

DATA



Aldolase A (1F8): sc-53933. Western blot analysis of Aldolase A expression in non-transfected: sc-117752 (A) and human Aldolase A transfected: sc-170532 (B) 293T whole cell lysates.

STORAGE

Store at -20° C. Repeated freezing and thawing should be minimized. Sample vial should be boiled once prior to use. Non-hazardous. No MSDS required.

RESEARCH USE

For research use only, not for use in diagnostic procedures.

PROTOCOLS

See our web site at www.scbt.com for detailed protocols and support products.