



SZABO SCANDIC

Part of Europa Biosite

Produktinformation



Forschungsprodukte & Biochemikalien



Zellkultur & Verbrauchsmaterial



Diagnostik & molekulare Diagnostik



Laborgeräte & Service

Weitere Information auf den folgenden Seiten!
See the following pages for more information!



Lieferung & Zahlungsart

siehe unsere [Liefer- und Versandbedingungen](#)

Zuschläge

- Mindermengenzuschlag
- Trockeneiszuschlag
- Gefahrgutzuschlag
- Expressversand

SZABO-SCANDIC HandelsgmbH

Quellenstraße 110, A-1100 Wien

T. +43(0)1 489 3961-0

F. +43(0)1 489 3961-7

mail@szabo-scandic.com

www.szabo-scandic.com

[linkedin.com/company/szaboscandic](https://www.linkedin.com/company/szaboscandic) 

Ezrin (h2): 293T Lysate: sc-170691

BACKGROUND

Ezrin, Moesin and Radixin belong to a family of highly homologous Actin-associated proteins that are localized just beneath the plasma membrane. The proteins are believed to be involved in the mediation of interactions between cytoskeletal and membrane proteins. Ezrin serves as a major cytoplasmic substrate of various protein-tyrosine kinases, including the epidermal growth factor receptor. Ezrin has also been identified as a cAMP-dependent protein kinase (A-kinase) anchoring protein and designated AKAP78. Moesin and Radixin share over 70% homology with Ezrin and are coexpressed within various cell types. Despite the high degree of homology, the three proteins exhibit a distinct receptor-specific pattern of phosphorylation.

REFERENCES

- Gould, K.L., Bretscher, A., Esch, F.S. and Hunter, T. 1989. cDNA cloning and sequencing of the protein-tyrosine kinase substrate, Ezrin, reveals homology to band 4.1. *EMBO J.* 8: 4133-4142.
- Lankes, W.T. and Furthmayr, H. 1991. Moesin: a member of the protein 4.1-Talin-Ezrin family of protein. *Proc. Natl. Acad. Sci. USA* 88: 8297-8301.
- Sato, N., Funayama, N., Nagafuchi, A., Yonemura, S., Tsukita, S. and Tsukita, S. 1992. A gene family consisting of Ezrin, Radixin and Moesin. Its specific localization at Actin filament/plasma membrane association sites. *J. Cell Sci.* 103: 131-143.
- Fazioli, F., Wong, W.T., Ullrich, S.J., Sakaguchi, K., Appella, E. and Di Fiore, P.P. 1993. The Ezrin-like family of tyrosine kinase substrates: receptor-specific pattern of tyrosine phosphorylation and relationship to malignant transformation. *Oncogene* 8: 1335-1345.
- Algrain, M., Turunen, O., Vaheri, A., Louvard, D. and Arpin, M. 1993. Ezrin contains cytoskeleton and membrane binding domains accounting for its proposed role as a membrane-cytoskeletal linker. *J. Cell Biol.* 120: 129-139.
- Tsukita, S., Oishi, K., Sato, N., Sagara, J., Kawai, A. and Tsukita, S. 1994. ERM family members as molecular linkers between the cell surface glycoprotein CD44 and Actin-based cytoskeletons. *J. Cell Biol.* 126: 391-401.
- Andreoli, C., Martin, M., Le Borgne, R., Reggio, H. and Mangeat, P. 1994. Ezrin has properties to self-associate at the plasma membrane. *J. Cell Sci.* 107: 2509-2521.
- Dransfield, D.T., Bradford, A.J., Smith, J., Martin, M., Roy, C., Mangeat, P.H. and Goldenring, J.R. 1997. Ezrin is a cyclic AMP-dependent protein kinase anchoring protein. *EMBO J.* 16: 35-43.

CHROMOSOMAL LOCATION

Genetic locus: EZR (human) mapping to 6q25.3.

PRODUCT

Ezrin (h2): 293T Lysate represents a lysate of human Ezrin transfected 293T cells and is provided as 100 µg protein in 200 µl SDS-PAGE buffer.

STORAGE

Store at -20° C. Repeated freezing and thawing should be minimized. Sample vial should be boiled once prior to use. Non-hazardous. No MSDS required.

APPLICATIONS

Ezrin (h2): 293T Lysate is suitable as a Western Blotting positive control for human reactive Ezrin antibodies. Recommended use: 10-20 µl per lane.

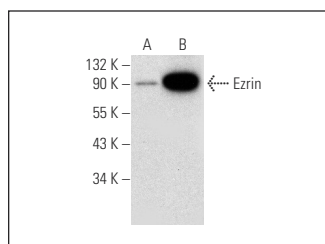
Control 293T Lysate: sc-117752 is available as a Western Blotting negative control lysate derived from non-transfected 293T cells.

Ezrin (E-8): sc-398807 is recommended as a positive control antibody for Western Blot analysis of enhanced human Ezrin expression in Ezrin transfected 293T cells (starting dilution 1:100, dilution range 1:100-1:1,000).

RECOMMENDED SUPPORT REAGENTS

To ensure optimal results, the following support reagents are recommended:
 1) Western Blotting: use m-IgGκ BP-HRP: sc-516102 or m-IgGκ BP-HRP (Cruz Marker): sc-516102-CM (dilution range: 1:1000-1:10000), Cruz Marker™ Molecular Weight Standards: sc-2035, UltraCruz® Blocking Reagent: sc-516214 and Western Blotting Luminol Reagent: sc-2048.

DATA



Ezrin (E-8): sc-398807. Western blot analysis of Ezrin expression in non-transfected: sc-117752 (A) and human Ezrin transfected: sc-170691 (B) whole cell lysates.

RESEARCH USE

For research use only, not for use in diagnostic procedures.

PROTOCOLS

See our web site at www.scbt.com for detailed protocols and support products.