



SZABO SCANDIC

Part of Europa Biosite

Produktinformation



Forschungsprodukte & Biochemikalien



Zellkultur & Verbrauchsmaterial



Diagnostik & molekulare Diagnostik



Laborgeräte & Service

Weitere Information auf den folgenden Seiten!
See the following pages for more information!



Lieferung & Zahlungsart

siehe unsere [Liefer- und Versandbedingungen](#)

Zuschläge

- Mindermengenzuschlag
- Trockeneiszuschlag
- Gefahrgutzuschlag
- Expressversand

SZABO-SCANDIC HandelsgmbH

Quellenstraße 110, A-1100 Wien

T. +43(0)1 489 3961-0

F. +43(0)1 489 3961-7

mail@szabo-scandic.com

www.szabo-scandic.com

[linkedin.com/company/szaboscandic](https://www.linkedin.com/company/szaboscandic) 

PGM 1 (h2): 293T Lysate: sc-171657

BACKGROUND

Phosphoglucomutase, which belongs to the phosphohexose mutase family, plays a role in glycogen catabolism (glycogenolysis) as well as in the process of glycogen synthesis (glycogenesis). During glycogenolysis, PGM converts glucose-1-phosphate to glucose-6-phosphate, thus promoting glycolysis and the pentose phosphate pathway. During glycogenesis, PGM functions in the opposite manner, converting glucose-6-phosphate into glucose-1-phosphate, to facilitate glycogen synthesis. PGM has three structural loci: PGM1, PGM2 and PGM3. These three genetic forms of PGM differ in amino acid sequences but catalyze the same reactions, therefore indicating that they are isozymes. PGM1, a 562 amino acid protein, is highly polymorphic; three mutations and four intragenic recombination events between the three mutation sites generate eight protein variants. All phosphoglucomutases act as monomers and bind one magnesium ion per subunit.

REFERENCES

1. Takahashi, N., Neel, J.V., Satoh, C., Nishizaki, J. and Masunari, N. 1982. A phylogeny for the principal alleles of the human phosphoglucomutase-1 locus. *Proc. Natl. Acad. Sci. USA* 79: 6636-6640.
2. Takahashi, N. and Neel, J.V. 1993. Intragenic recombination at the human phosphoglucomutase 1 locus: predictions fulfilled. *Proc. Natl. Acad. Sci. USA* 90: 10725-10729.
3. Yip, S.P., Lovegrove, J.U., Rana, N.A., Hopkinson, D.A. and Whitehouse, D.B. 1999. Mapping recombination hotspots in human phosphoglucomutase (PGM 1). *Hum. Mol. Genet.* 8: 1699-1706.
4. Bro, C., Knudsen, S., Regenber, B., Olsson, L. and Nielsen, J. 2005. Improvement of galactose uptake in *Saccharomyces cerevisiae* through overexpression of phosphoglucomutase: example of transcript analysis as a tool in inverse metabolic engineering. *Appl. Environ. Microbiol.* 71: 6465-6472.
5. Buchanan, J.T., Stannard, J.A., Lauth, X., Ostland, V.E., Powell, H.C., Westerman, M.E. and Nizet, V. 2005. *Streptococcus iniae* phosphoglucomutase is a virulence factor and a target for vaccine development. *Infect. Immun.* 73: 6935-6944.
6. McCarthy, T.R., Torrelles, J.B., MacFarlane, A.S., Katawczik, M., Kutzbach, B., Desjardin, L.E., Clegg, S., Goldberg, J.B. and Schlesinger, L.S. 2005. Overexpression of *Mycobacterium tuberculosis* manB, a phosphomannomutase that increases phosphatidylinositol mannoside biosynthesis in *Mycobacterium smegmatis* and mycobacterial association with human macrophages. *Mol. Microbiol.* 58: 774-790.
7. Penha, L.L., Mendonça-Previato, L., Previato, J.O., Scharfstein, J., Heise, N. and Lima, A.P. 2005. Cloning and characterization of the phosphoglucomutase of *Trypanosoma cruzi* and functional complementation of a *Saccharomyces cerevisiae* PGM null mutant. *Glycobiology* 15: 1359-1367.
8. Howard, S.C., Deminoff, S.J. and Herman, P.K. 2006. Increased phosphoglucomutase activity suppresses the galactose growth defect associated with elevated levels of Ras signaling in *S. cerevisiae*. *Curr. Genet.* 49: 1-6.

CHROMOSOMAL LOCATION

Genetic locus: PGM1 (human) mapping to 1p31.3.

PRODUCT

PGM 1 (h2): 293T Lysate represents a lysate of human PGM 1 transfected 293T cells and is provided as 100 µg protein in 200 µl SDS-PAGE buffer.

APPLICATIONS

PGM 1 (h2): 293T Lysate is suitable as a Western Blotting positive control for human reactive PGM 1 antibodies. Recommended use: 10-20 µl per lane.

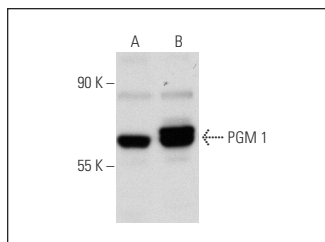
Control 293T Lysate: sc-117752 is available as a Western Blotting negative control lysate derived from non-transfected 293T cells.

PGM 1 (Y-173): sc-100411 is recommended as a positive control antibody for Western Blot analysis of enhanced human PGM 1 expression in PGM 1 transfected 293T cells (starting dilution 1:100, dilution range 1:100-1:1,000).

RECOMMENDED SUPPORT REAGENTS

To ensure optimal results, the following support reagents are recommended:
 1) Western Blotting: use m-IgGκ BP-HRP: sc-516102 or m-IgGκ BP-HRP (Cruz Marker): sc-516102-CM (dilution range: 1:1000-1:10000), Cruz Marker™ Molecular Weight Standards: sc-2035, UltraCruz® Blocking Reagent: sc-516214 and Western Blotting Luminol Reagent: sc-2048.

DATA



PGM 1 (Y-173): sc-100411. Western blot analysis of PGM 1 expression in non-transfected: sc-117752 (A) and human PGM 1 transfected: sc-171657 (B) 293T whole cell lysates.

STORAGE

Store at -20° C. Repeated freezing and thawing should be minimized. Sample vial should be boiled once prior to use. Non-hazardous. No MSDS required.

RESEARCH USE

For research use only, not for use in diagnostic procedures.

PROTOCOLS

See our web site at www.scbt.com for detailed protocols and support products.