



SZABO SCANDIC

Part of Europa Biosite

Produktinformation



Forschungsprodukte & Biochemikalien



Zellkultur & Verbrauchsmaterial



Diagnostik & molekulare Diagnostik



Laborgeräte & Service

Weitere Information auf den folgenden Seiten!
See the following pages for more information!



Lieferung & Zahlungsart

siehe unsere [Liefer- und Versandbedingungen](#)

Zuschläge

- Mindermengenzuschlag
- Trockeneiszuschlag
- Gefahrgutzuschlag
- Expressversand

SZABO-SCANDIC HandelsgmbH

Quellenstraße 110, A-1100 Wien

T. +43(0)1 489 3961-0

F. +43(0)1 489 3961-7

mail@szabo-scandic.com

www.szabo-scandic.com

[linkedin.com/company/szaboscandic](https://www.linkedin.com/company/szaboscandic) 

LZTFL1 (h): 293T Lysate: sc-172211

BACKGROUND

LZTFL1 (leucine zipper transcription factor-like protein 1) is a 299 amino acid protein that shares 90% sequence identity with its mouse counterpart. While LZTFL1 is expressed in liver, brain, lung and kidney during early development, it is found in testis, heart, thymus, pancreas, ovary, prostate, colon, skeletal muscle and small intestine in adult tissues. LZTFL1 has a leucine zipper pattern and several coiled-coil domains, suggesting a possible role in transcriptional regulation. The gene encoding LZTFL1 is located in a tumor suppressor region on chromosome 3, indicating that LZTFL1 may be a potential tumor suppressor. Two isoforms of LZTFL1 exist due to alternative polyadenylation events.

REFERENCES

1. Busch, S.J. and Sassone-Corsi, P. 1990. Dimers, leucine zippers and DNA-binding domains. *Trends Genet.* 6: 36-40.
2. Kiss, H., Kedra, D., Kiss, C., Kost-Alimova, M., Yang, Y., Klein, G., Imreh, S. and Dumanski, J.P. 2001. The LZTFL1 gene is a part of a transcriptional map covering 250 kb within the common eliminated region 1 (C3CER1) in 3p21.3. *Genomics* 73: 10-19.
3. Strausberg, R.L., Feingold, E.A., Grouse, L.H., Derge, J.G., Klausner, R.D., Collins, F.S., Wagner, L., Shenmen, C.M., Schuler, G.D., Altschul, S.F., Zeeberg, B., Buetow, K.H., Schaefer, C.F., Bhat, N.K., Hopkins, R.F., Jordan, H., Moore, T., Max, S.I., Wang, J., et al. 2002. Generation and initial analysis of more than 15,000 full-length human and mouse cDNA sequences. *Proc. Natl. Acad. Sci. USA* 99: 16899-16903.
4. Online Mendelian Inheritance in Man, OMIM™. 2002. Johns Hopkins University, Baltimore, MD. MIM Number: 606568. World Wide Web URL: <http://www.ncbi.nlm.nih.gov/omim/>

CHROMOSOMAL LOCATION

Genetic locus: LZTFL1 (human) mapping to 3p21.31.

PRODUCT

LZTFL1 (h): 293T Lysate represents a lysate of human LZTFL1 transfected 293T cells and is provided as 100 µg protein in 200 µl SDS-PAGE buffer.

STORAGE

Store at -20° C. Repeated freezing and thawing should be minimized. Sample vial should be boiled once prior to use. Non-hazardous. No MSDS required.

APPLICATIONS

LZTFL1 (h): 293T Lysate is suitable as a Western Blotting positive control for human reactive LZTFL1 antibodies. Recommended use: 10-20 µl per lane.

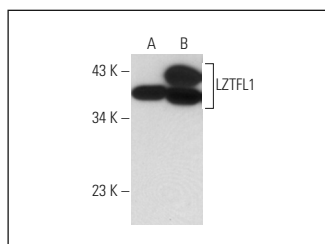
Control 293T Lysate: sc-117752 is available as a Western Blotting negative control lysate derived from non-transfected 293T cells.

LZTFL1 (35-Y): sc-100968 is recommended as a positive control antibody for Western Blot analysis of enhanced human LZTFL1 expression in LZTFL1 transfected 293T cells (starting dilution 1:100, dilution range 1:100-1:1,000).

RECOMMENDED SUPPORT REAGENTS

To ensure optimal results, the following support reagents are recommended:
 1) Western Blotting: use m-IgGκ BP-HRP: sc-516102 or m-IgGκ BP-HRP (Cruz Marker): sc-516102-CM (dilution range: 1:1000-1:10000), Cruz Marker™ Molecular Weight Standards: sc-2035, UltraCruz® Blocking Reagent: sc-516214 and Western Blotting Luminol Reagent: sc-2048.

DATA



LZTFL1 (35-Y): sc-100968. Western blot analysis of LZTFL1 expression in non-transfected: sc-117752 (A) and human LZTFL1 transfected: sc-172211 (B) 293T whole cell lysates.

RESEARCH USE

For research use only, not for use in diagnostic procedures.

PROTOCOLS

See our web site at www.scbt.com for detailed protocols and support products.