



# SZABO SCANDIC

Part of Europa Biosite

## Produktinformation



Forschungsprodukte & Biochemikalien



Zellkultur & Verbrauchsmaterial



Diagnostik & molekulare Diagnostik



Laborgeräte & Service

Weitere Information auf den folgenden Seiten!  
See the following pages for more information!



### Lieferung & Zahlungsart

siehe unsere [Liefer- und Versandbedingungen](#)

### Zuschläge

- Mindermengenzuschlag
- Trockeneiszuschlag
- Gefahrgutzuschlag
- Expressversand

### SZABO-SCANDIC HandelsgmbH

Quellenstraße 110, A-1100 Wien

T. +43(0)1 489 3961-0

F. +43(0)1 489 3961-7

[mail@szabo-scandic.com](mailto:mail@szabo-scandic.com)

[www.szabo-scandic.com](http://www.szabo-scandic.com)

[linkedin.com/company/szaboscandic](https://www.linkedin.com/company/szaboscandic) 

# CRP2BP (h): 293T Lysate: sc-172463

## BACKGROUND

CRP2BP (cysteine-rich protein 2-binding protein, CSR2-binding protein) is a 782 amino acid member of the cysteine- and glycine-rich protein family (CRP1, CRP2 and CRP3), which contain 2 zinc-binding LIM domains, LIM1 (amino-terminal) and LIM2 (carboxyl-terminal). This group is implicated in diverse cellular processes linked to differentiation, growth control and pathogenesis. The LIM domain is a conserved cysteine and histidine-containing structural module of two tandemly arranged zinc fingers. It has been identified in single or multiple copies in a variety of regulatory proteins. CRP2BP specifically interacts with the double LIM domain protein CRP2. Although present in cytoplasm, CRP2BP is mainly a nuclear protein, with highest expression in skeletal muscle and heart.

## REFERENCES

- Okano, I., Yamamoto, T., Kaji, A., Kimura, T., Mizuno, K. and Nakamura, T. 1993. Cloning of CRP2, a novel member of the cysteine-rich protein family with two repeats of an unusual LIM/double zinc-finger motif. *FEBS Lett.* 333: 51-55.
- Karim, M.A., Ohta, K., Egashira, M., Jinno, Y., Niikawa, N., Matsuda, I. and Indo, Y. 1997. Human ESP1/CRP2, a member of the LIM domain protein family: characterization of the cDNA and assignment of the gene locus to chromosome 14q32.3. *Genomics* 31: 167-176.
- Konrat, R., Kräutler, B., Weiskirchen, R. and Bister, K. 1998. Structure of cysteine- and glycine-rich protein CRP2. Backbone dynamics reveal motional freedom and independent spatial orientation of the LIM domains. *J. Biol. Chem.* 273: 23233-23240.
- Kloiber, K., Weiskirchen, R., Kräutler, B., Bister, K. and Konrat, R. 1999. Mutational analysis and NMR spectroscopy of quail cysteine and glycine-rich protein CRP2 reveal an intrinsic segmental flexibility of LIM domains. *J. Mol. Biol.* 292: 893-908.
- Weiskirchen, R. and Gressner, A.M. 2000. The cysteine- and glycine-rich LIM domain protein CRP2 specifically interacts with a novel human protein (CRP2BP). *Biochem. Biophys. Res. Commun.* 274: 655-663.
- Weiskirchen, R., Moser, M., Weiskirchen, S., Erdel, M., Dahmen, S., Buettner, R. and Gressner, A.M. 2001. LIM-domain protein cysteine- and glycine-rich protein 2 (CRP2) is a novel marker of hepatic stellate cells and binding partner of the protein inhibitor of activated Stat1. *Biochem. J.* 359: 485-496.

## CHROMOSOMAL LOCATION

Genetic locus: CSR2BP (human) mapping to 20p11.23.

## PRODUCT

CRP2BP (h): 293T Lysate represents a lysate of human CRP2BP transfected 293T cells and is provided as 100 µg protein in 200 µl SDS-PAGE buffer.

## STORAGE

Store at -20° C. Repeated freezing and thawing should be minimized. Sample vial should be boiled once prior to use. Non-hazardous. No MSDS required.

## APPLICATIONS

CRP2BP (h): 293T Lysate is suitable as a Western Blotting positive control for human reactive CRP2BP antibodies.

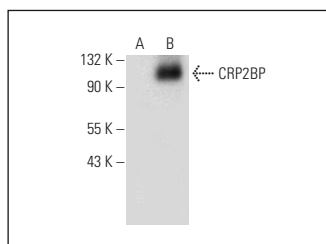
Control 293T Lysate: sc-117752 is available as a Western Blotting negative control lysate derived from non-transfected 293T cells.

CRP2BP (A-11): sc-398475 is recommended as a positive control antibody for Western Blot analysis of enhanced human CRP2BP expression in CRP2BP transfected 293T cells (starting dilution 1:100, dilution range 1:100-1:1,000).

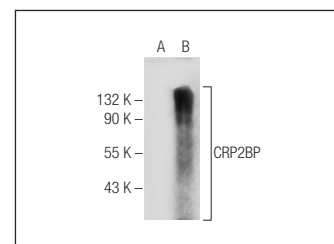
## RECOMMENDED SUPPORT REAGENTS

To ensure optimal results, the following support reagents are recommended:  
 1) Western Blotting: use m-IgGκ BP-HRP: sc-516102 or m-IgGκ BP-HRP (Cruz Marker): sc-516102-CM (dilution range: 1:1000-1:10000), Cruz Marker™ Molecular Weight Standards: sc-2035, UltraCruz® Blocking Reagent: sc-516214 and Western Blotting Luminol Reagent: sc-2048.

## DATA



CRP2BP (A-11): sc-398475. Western blot analysis of CRP2BP expression in non-transfected: sc-117752 (A) and human CRP2BP transfected: sc-172463 (B) 293T whole cell lysates.



CRP2BP (G-2): sc-390057. Western blot analysis of CRP2BP expression in non-transfected: sc-117752 (A) and human CRP2BP transfected: sc-172463 (B) 293T whole cell lysates.

## RESEARCH USE

For research use only, not for use in diagnostic procedures.

## PROTOCOLS

See our web site at [www.scbt.com](http://www.scbt.com) for detailed protocols and support products.