



SZABO SCANDIC

Part of Europa Biosite

Produktinformation



Forschungsprodukte & Biochemikalien



Zellkultur & Verbrauchsmaterial



Diagnostik & molekulare Diagnostik



Laborgeräte & Service

Weitere Information auf den folgenden Seiten!
See the following pages for more information!



Lieferung & Zahlungsart

siehe unsere [Liefer- und Versandbedingungen](#)

Zuschläge

- Mindermengenzuschlag
- Trockeneiszuschlag
- Gefahrgutzuschlag
- Expressversand

SZABO-SCANDIC HandelsgmbH

Quellenstraße 110, A-1100 Wien

T. +43(0)1 489 3961-0

F. +43(0)1 489 3961-7

mail@szabo-scandic.com

www.szabo-scandic.com

[linkedin.com/company/szaboscandic](https://www.linkedin.com/company/szaboscandic) 

PCDH2 (h2): 293T Lysate: sc-172657

BACKGROUND

Protocadherins are a large family of cadherin-like cell adhesion proteins that are involved in the establishment and maintenance of neuronal connections in the brain. There are three protocadherin gene clusters, designated α , β and γ , all of which contain multiple tandemly arranged genes. PCDH2 (protocadherin-2), also known as PCDHGC3 (protocadherin γ subfamily C, 3) or PC43, is a 934 amino acid single-pass type I membrane protein that contains 6 cadherin domains and belongs to the protocadherin γ family. Functioning as a calcium-dependent cell-adhesion protein, PCDH2 is thought to be involved in the establishment and maintenance of neuronal connections within the brain. Multiple isoforms of PCDH2 exist due to alternative splicing events.

REFERENCES

1. Sano, K., Tanihara, H., Heimark, R.L., Obata, S., Davidson, M., St John, T., Taketani, S. and Suzuki, S. 1993. Protocadherins: a large family of cadherin-related molecules in central nervous system. *EMBO J.* 12: 2249-2256.
2. Sago, H., Kitagawa, M., Obata, S., Mori, N., Taketani, S., Rochelle, J.M., Seldin, M.F., Davidson, M., St John, T. and Suzuki, S.T. 1995. Cloning, expression, and chromosomal localization of a novel cadherin-related protein, protocadherin-3. *Genomics* 29: 631-640.
3. Wu, Q. and Maniatis, T. 1999. A striking organization of a large family of human neural cadherin-like cell adhesion genes. *Cell* 97: 779-790.
4. Yagi, T. and Takeichi, M. 2000. Cadherin superfamily genes: functions, genomic organization, and neurologic diversity. *Genes Dev.* 14: 1169-1180.
5. Nollet, F., Kools, P. and van Roy, F. 2000. Phylogenetic analysis of the cadherin superfamily allows identification of six major subfamilies besides several solitary members. *J. Mol. Biol.* 299: 551-572.
6. Wu, Q., Zhang, T., Cheng, J.F., Kim, Y., Grimwood, J., Schmutz, J., Dickson, M., Noonan, J.P., Zhang, M.Q., Myers, R.M. and Maniatis, T. 2001. Comparative DNA sequence analysis of mouse and human protocadherin gene clusters. *Genome Res.* 11: 389-404.
7. Reiss, K., Maretzky, T., Haas, I.G., Schulte, M., Ludwig, A., Frank, M. and Saftig, P. 2006. Regulated ADAM10-dependent ectodomain shedding of gamma-protocadherin C3 modulates cell-cell adhesion. *J. Biol. Chem.* 281: 21735-21744.
8. Online Mendelian Inheritance in Man, OMIM™. 2007. Johns Hopkins University, Baltimore, MD. MIM Number: 603627. World Wide Web URL: <http://www.ncbi.nlm.nih.gov/omim/>

CHROMOSOMAL LOCATION

Genetic locus: PCDHGC3 (human) mapping to 5q31.3.

PRODUCT

PCDH2 (h2): 293T Lysate represents a lysate of human PCDH2 transfected 293T cells and is provided as 100 μ g protein in 200 μ l SDS-PAGE buffer.

STORAGE

Store at -20° C. Repeated freezing and thawing should be minimized. Sample vial should be boiled once prior to use. Non-hazardous. No MSDS required.

APPLICATIONS

PCDH2 (h2): 293T Lysate is suitable as a Western Blotting positive control for human reactive PCDH2 antibodies. Recommended use: 10-20 μ l per lane.

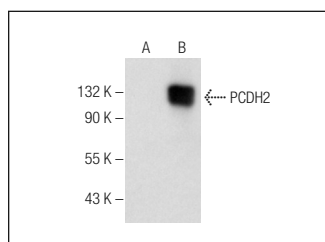
Control 293T Lysate: sc-117752 is available as a Western Blotting negative control lysate derived from non-transfected 293T cells.

PCDH2 (D-11): sc-376885 is recommended as a positive control antibody for Western Blot analysis of enhanced human PCDH2 expression in PCDH2 transfected 293T cells (starting dilution 1:100, dilution range 1:100-1:1,000).

RECOMMENDED SUPPORT REAGENTS

To ensure optimal results, the following support reagents are recommended:
 1) Western Blotting: use m-IgG κ BP-HRP: sc-516102 or m-IgG κ BP-HRP (Cruz Marker): sc-516102-CM (dilution range: 1:1000-1:10000), Cruz Marker™ Molecular Weight Standards: sc-2035, UltraCruz® Blocking Reagent: sc-516214 and Western Blotting Luminol Reagent: sc-2048.

DATA



PCDH2 (D-11): sc-376885. Western blot analysis of PCDH2 expression in non-transfected: sc-117752 (A) and human PCDH2 transfected: sc-172657 (B) 293T whole cell lysates.

RESEARCH USE

For research use only, not for use in diagnostic procedures.

PROTOCOLS

See our web site at www.scbt.com for detailed protocols and support products.