



SZABO SCANDIC

Part of Europa Biosite

Produktinformation



Forschungsprodukte & Biochemikalien



Zellkultur & Verbrauchsmaterial



Diagnostik & molekulare Diagnostik



Laborgeräte & Service

Weitere Information auf den folgenden Seiten!
See the following pages for more information!



Lieferung & Zahlungsart

siehe unsere [Liefer- und Versandbedingungen](#)

Zuschläge

- Mindermengenzuschlag
- Trockeneiszuschlag
- Gefahrgutzuschlag
- Expressversand

SZABO-SCANDIC HandelsgmbH

Quellenstraße 110, A-1100 Wien

T. +43(0)1 489 3961-0

F. +43(0)1 489 3961-7

mail@szabo-scandic.com

www.szabo-scandic.com

[linkedin.com/company/szaboscandic](https://www.linkedin.com/company/szaboscandic) 

α3C Tubulin (h): 293T Lysate: sc-173019

BACKGROUND

Tubulin is a major cytoskeleton component that has five distinct forms, designated α , β , γ , δ and ϵ Tubulin. α and β tubulins form heterodimers which multimerize to form a microtubule filament. There are five β Tubulin isoforms ($\beta 1$, $\beta 2$, $\beta 3$, $\beta 4A$ and $\beta 4B$) that are expressed in mammalian tissues. $\beta 1$ and $\beta 4$ are present throughout the cytosol, $\beta 2$ is present in the nuclei and nucleoplasm, and $\beta 3$ is a neuron-specific cytoskeletal protein. γ Tubulin forms the gammasome, which is required for nucleating microtubule filaments at the centrosome. Both δ Tubulin and ϵ Tubulin are associated with the centrosome. δ Tubulin is a homolog of the *Chlamydomonas* δ Tubulin Uni3 and is found in association with the centrioles, whereas ϵ Tubulin localizes to the pericentriolar material. ϵ Tubulin exhibits a cell cycle-specific pattern of localization; first associating with only the older of the centrosomes in a newly duplicated pair, and later associating with both centrosomes.

REFERENCES

- Weisenberg, R. 1981. Invited review: the role of nucleotide triphosphate in Actin and Tubulin assembly and function. *Cell Motil.* 1: 485-497.
- Burns, R.G. 1991. α , β , and γ Tubulins: sequence comparisons and structural constraints. *Cell Motil. Cytoskeleton* 20: 181-189.
- Zheng, Y., Jung, M.K. and Oakley, B.R. 1991. γ Tubulin is present in *Drosophila melanogaster* and Homosapiens and is associated with the centrosome. *Cell* 65: 817-823.
- Leask, A. and Stearns, T. 1998. Expression of amino- and carboxyl-terminal γ and β Tubulin mutants in cultured epithelial cells. *J. Biol. Chem.* 273: 2661-2668.
- Ludueno, R.F. 1998. Multiple forms of Tubulin: different gene products and covalent modifications. *Int. Rev. Cytol.* 178: 207-275.
- Walss, C., Kreisberg, J.I. and Ludueno, R.F. 1999. Presence of the $\beta 2$ iso-type of Tubulin in the nuclei of cultured mesangial cells from rat kidney. *Cell Motil. Cytoskeleton* 42: 274-284.
- Modig, C., Olsson, P.E., Barasoain, I., de Ines, C., Andreu, J.M., Roach, M.C., Ludueno, R.F. and Wallin, M. 1999. Identification of $\beta 3$ and $\beta 4$ Tubulin isotypes in cold-adapted microtubules from Atlantic cod (*Gadus morhua*): antibody mapping and cDNA sequencing. *Cell Motil. Cytoskeleton* 42: 315-330.
- Woulfe, J. and Munoz, D. 2000. Tubulin immunoreactive neuronal intra-nuclear inclusions in the human brain. *Neuropathol. Appl. Neurobiol.* 26: 161-171.
- Chang, P. and Stearns, T. 2000. δ Tubulin and ϵ Tubulin: two new human centrosomal tubulins reveal new aspects of centrosome structure and function. *Nat. Cell Biol.* 2: 30-35.

CHROMOSOMAL LOCATION

Genetic locus: TUBA3C (human) mapping to 13q12.11.

PRODUCT

$\alpha 3C$ Tubulin (h): 293T Lysate represents a lysate of human $\alpha 3C$ Tubulin transfected 293T cells and is provided as 100 μ g protein in 200 μ l SDS-PAGE buffer.

APPLICATIONS

$\alpha 3C$ Tubulin (h): 293T Lysate is suitable as a Western Blotting positive control for human reactive $\alpha 3C$ Tubulin antibodies. Recommended use: 10-20 μ l per lane.

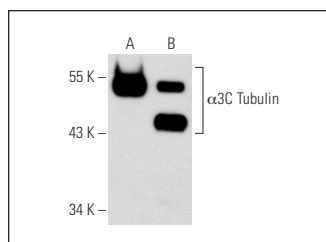
Control 293T Lysate: sc-117752 is available as a Western Blotting negative control lysate derived from non-transfected 293T cells.

α Tubulin (B-5-1-2): sc-23948 is recommended as a positive control antibody for Western Blot analysis of enhanced human $\alpha 3C$ Tubulin expression in $\alpha 3C$ Tubulin transfected 293T cells (starting dilution 1:100, dilution range 1:100-1:1,000).

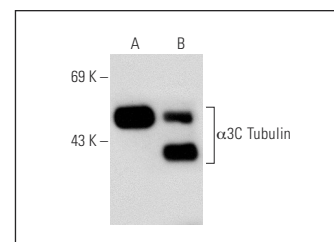
RECOMMENDED SUPPORT REAGENTS

To ensure optimal results, the following support reagents are recommended: 1) Western Blotting: use m-IgG κ BP-HRP: sc-516102 or m-IgG κ BP-HRP (Cruz Marker): sc-516102-CM (dilution range: 1:1000-1:10000), Cruz Marker™ Molecular Weight Standards: sc-2035, UltraCruz® Blocking Reagent: sc-516214 and Western Blotting Luminol Reagent: sc-2048.

DATA



α Tubulin (B-5-1-2): sc-23948. Western blot analysis of $\alpha 3C$ Tubulin expression in non-transfected: sc-117752 (A) and human $\alpha 3C$ Tubulin transfected: sc-173019 (B) 293T whole cell lysates.



α Tubulin (6A204): sc-69969. Western blot analysis of $\alpha 3C$ Tubulin expression in non-transfected: sc-117752 (A) and human $\alpha 3C$ Tubulin transfected: sc-173019 (B) 293T whole cell lysates.

STORAGE

Store at -20° C. Repeated freezing and thawing should be minimized. Sample vial should be boiled once prior to use. Non-hazardous. No MSDS required.

RESEARCH USE

For research use only, not for use in diagnostic procedures.

PROTOCOLS

See our web site at www.scbt.com for detailed protocols and support products.