



# SZABO SCANDIC

Part of Europa Biosite

## Produktinformation



Forschungsprodukte & Biochemikalien



Zellkultur & Verbrauchsmaterial



Diagnostik & molekulare Diagnostik



Laborgeräte & Service

Weitere Information auf den folgenden Seiten!  
See the following pages for more information!



### Lieferung & Zahlungsart

siehe unsere [Liefer- und Versandbedingungen](#)

### Zuschläge

- Mindermengenzuschlag
- Trockeneiszuschlag
- Gefahrgutzuschlag
- Expressversand

### SZABO-SCANDIC HandelsgmbH

Quellenstraße 110, A-1100 Wien

T. +43(0)1 489 3961-0

F. +43(0)1 489 3961-7

[mail@szabo-scandic.com](mailto:mail@szabo-scandic.com)

[www.szabo-scandic.com](http://www.szabo-scandic.com)

[linkedin.com/company/szaboscandic](https://www.linkedin.com/company/szaboscandic) 

# DOM3Z (h3): 293T Lysate: sc-173189

## BACKGROUND

DOM3Z (DOM-3 homolog Z), also known as NG6 or DOM3L, is a 396 amino acid ubiquitously expressed protein belonging to the DOM3Z family. The gene encoding DOM3Z maps to human chromosome 6 in the major histocompatibility complex (MHC) class III region. Chromosome 6 contains 170 million base pairs and comprises nearly 6% of the human genome. Deletion of a portion of the q arm of chromosome 6 is associated with early onset intestinal cancer, suggesting the presence of a cancer susceptibility locus. Additionally, Porphyria cutanea tarda, Parkinson's disease and Stickler syndrome are all associated with genes that map to chromosome 6.

## REFERENCES

1. Brunner, H.G., van Beersum, S.E., Warman, M.L., Olsen, B.R., Ropers, H.H. and Mariman, E.C. 1994. A Stickler syndrome gene is linked to chromosome 6 near the COL11A2 gene. *Hum. Mol. Genet.* 3: 1561-1564.
2. Yu, C.Y. 1998. Molecular genetics of the human MHC complement gene cluster. *Exp. Clin. Immunogenet.* 15: 213-230.
3. Yang, Z., Shen, L., Dangel, A.W., Wu, L.C. and Yu, C.Y. 1998. Four ubiquitously expressed genes, RD (D6S45)-SK12W (SKIV2L)-DOM3Z-RP1 (D6S60E), are present between complement component genes factor B and C4 in the class III region of the HLA. *Genomics* 53: 338-347.
4. Yang, Z. and Yu, C.Y. 2000. Organizations and gene duplications of the human and mouse MHC complement gene clusters. *Exp. Clin. Immunogenet.* 17: 1-17.
5. Cesari, R., Martin, E.S., Calin, G.A., Pentimalli, F., Bichi, R., McAdams, H., Trapasso, F., Drusco, A., Shimizu, M., Masciullo, V., D'Andrilli, G., Scambia, G., Picchio, M.C., Alder, H., Godwin, A.K. and Croce, C.M. 2003. Parkin, a gene implicated in autosomal recessive juvenile parkinsonism, is a candidate tumor suppressor gene on chromosome 6q25-q27. *Proc. Natl. Acad. Sci. USA* 100: 5956-5961.
6. Bläker, H., Mechttersheimer, G., Sutter, C., Hertkorn, C., Kern, M.A., Rieker, R.J., Penzel, R., Schirmacher, P. and Kloor, M. 2008. Recurrent deletions at 6q in early age of onset non-HNPCC- and non-FAP-associated intestinal carcinomas. Evidence for a novel cancer susceptibility locus at 6q14-q22. *Genes Chromosomes Cancer* 47: 159-164.
7. Xiang, S., Cooper-Morgan, A., Jiao, X., Kiledjian, M., Manley, J.L. and Tong, L. 2009. Structure and function of the 5'→3' exoribonuclease Rat1 and its activating partner Rai1. *Nature* 458: 784-788.
8. Jalil, S., Grady, J.J., Lee, C. and Anderson, K.E. 2010. Associations among behavior-related susceptibility factors in porphyria cutanea tarda. *Clin. Gastroenterol. Hepatol.* 8: 297-302.

## CHROMOSOMAL LOCATION

Genetic locus: DXO (human) mapping to 6p21.33.

## PRODUCT

DOM3Z (h3): 293T Lysate represents a lysate of human DOM3Z transfected 293T cells and is provided as 100 µg protein in 200 µl SDS-PAGE buffer.

## APPLICATIONS

DOM3Z (h3): 293T Lysate is suitable as a Western Blotting positive control for human reactive DOM3Z antibodies. Recommended use: 10-20 µl per lane.

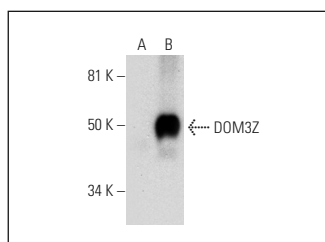
Control 293T Lysate: sc-117752 is available as a Western Blotting negative control lysate derived from non-transfected 293T cells.

DOM3Z (B-12): sc-393141 is recommended as a positive control antibody for Western Blot analysis of enhanced human DOM3Z expression in DOM3Z transfected 293T cells (starting dilution 1:100, dilution range 1:100-1:1,000).

## RECOMMENDED SUPPORT REAGENTS

To ensure optimal results, the following support reagents are recommended:  
1) Western Blotting: use m-IgGκ BP-HRP: sc-516102 or m-IgGκ BP-HRP (Cruz Marker): sc-516102-CM (dilution range: 1:1000-1:10000), Cruz Marker™ Molecular Weight Standards: sc-2035, UltraCruz® Blocking Reagent: sc-516214 and Western Blotting Luminol Reagent: sc-2048.

## DATA



DOM3Z (B-12): sc-393141. Western blot analysis of DOM3Z expression in non-transfected: sc-117752 (A) and human DOM3Z transfected: sc-173189 (B) 293T whole cell lysates.

## STORAGE

Store at -20° C. Repeated freezing and thawing should be minimized. Sample vial should be boiled once prior to use. Non-hazardous. No MSDS required.

## RESEARCH USE

For research use only, not for use in diagnostic procedures.

## PROTOCOLS

See our web site at [www.scbt.com](http://www.scbt.com) for detailed protocols and support products.