



SZABO SCANDIC

Part of Europa Biosite

Produktinformation



Forschungsprodukte & Biochemikalien



Zellkultur & Verbrauchsmaterial



Diagnostik & molekulare Diagnostik



Laborgeräte & Service

Weitere Information auf den folgenden Seiten!
See the following pages for more information!



Lieferung & Zahlungsart

siehe unsere [Liefer- und Versandbedingungen](#)

Zuschläge

- Mindermengenzuschlag
- Trockeneiszuschlag
- Gefahrgutzuschlag
- Expressversand

SZABO-SCANDIC HandelsgmbH

Quellenstraße 110, A-1100 Wien

T. +43(0)1 489 3961-0

F. +43(0)1 489 3961-7

mail@szabo-scandic.com

www.szabo-scandic.com

[linkedin.com/company/szaboscandic](https://www.linkedin.com/company/szaboscandic) 

PEA3 (h2): 293T Lysate: sc-173295

BACKGROUND

Several members of the Ets gene family are known to encode sequence-specific DNA binding proteins. These include mouse PU.1, mouse and human Ets-1, *Drosophila* E74, chicken and human Ets-2, and rat GABP- α . Each of these proteins recognizes similar motifs in DNA that share a centrally located 5'-GGAA-3' element. For instance, PEA3 binds the motif 5'-AGGAAG-3' (the PEA-3 motif), but does not bind to the sequence 5'-AGGAAC-3', recognized by PU.1, although PU.1 binds equally well to both sequences. It appears that all of the Ets proteins recognize the same central core sequence but that each protein interacts with unique sequences that flank this core. PEA3 is expressed at readily detectable levels in cells of epithelial and fibroblastic origin but is not expressed in hematopoietic cells. This is in contrast to other members of the Ets gene family, such as Ets-1, Ets-2 and Fli-1, each of which is expressed primarily in cells of hematopoietic origin.

REFERENCES

1. Ghysdael, J., et al. 1986. Identification and preferential expression in thymic and bursal lymphocytes of a c-Ets oncogene-encoded M_r 54,000 cytoplasmic protein. *Proc. Natl. Acad. Sci. USA* 83: 1714-1718.
2. Reddy, E.S.P., et al. 1987. The Erg gene: a human gene related to the Ets oncogene. *Proc. Natl. Acad. Sci. USA* 84: 6131-6135.
3. Rao, V.N., et al. 1987. Erg, a human Ets-related gene on chromosome 21: alternative splicing, polyadenylation, and translation. *Science* 237: 635-639.
4. Rao, V.N., et al. 1989. Elk, tissue-specific Ets-related genes on chromosomes X and 14 near translocation breakpoints. *Science* 244: 66-70.
5. Burtis, K.C., et al. 1990. The *Drosophila* 74EF early puff contains E74, a complex ecdysone-inducible gene that encodes two Ets-related proteins. *Cell* 61: 85-99.
6. Klemsz, M.J., et al. 1990. The macrophage and B cell-specific transcription factor PU.1 is related to the Ets oncogene. *Cell* 61: 113-124.
7. Xin, J.-H., et al. 1992. Molecular cloning and characterization of PEA3, a new member of the Ets oncogene family that is differentially expressed in mouse embryonic cells. *Genes Dev.* 6: 481-496.

CHROMOSOMAL LOCATION

Genetic locus: ETV4 (human) mapping to 17q21.31.

PRODUCT

PEA3 (h2): 293T Lysate represents a lysate of human PEA3 transfected 293T cells and is provided as 100 μ g protein in 200 μ l SDS-PAGE buffer.

STORAGE

Store at -20° C. Repeated freezing and thawing should be minimized. Sample vial should be boiled once prior to use. Non-hazardous. No MSDS required.

PROTOCOLS

See our web site at www.scbt.com for detailed protocols and support products.

APPLICATIONS

PEA3 (h2): 293T Lysate is suitable as a Western Blotting positive control for human reactive PEA3 antibodies. Recommended use: 10-20 μ l per lane.

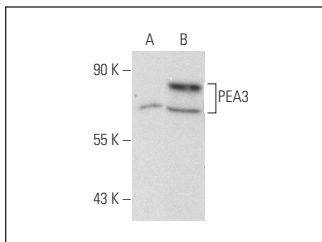
Control 293T Lysate: sc-117752 is available as a Western Blotting negative control lysate derived from non-transfected 293T cells.

PEA3 (1A2G3): sc-130661 is recommended as a positive control antibody for Western Blot analysis of enhanced human PEA3 expression in PEA3 transfected 293T cells (starting dilution 1:100, dilution range 1:100-1:1,000).

RECOMMENDED SUPPORT REAGENTS

To ensure optimal results, the following support reagents are recommended:
1) Western Blotting: use m-IgG λ BP-HRP: sc-516132 or m-IgG λ BP-HRP (Cruz Marker): sc-516132-CM (dilution range: 1:1000-1:10000), Cruz Marker™ Molecular Weight Standards: sc-2035, UltraCruz® Blocking Reagent: sc-516214 and Western Blotting Luminol Reagent: sc-2048.

DATA



PEA3 (1A2G3): sc-130661. Western blot analysis of PEA3 expression in non-transfected: sc-117752 (A) and human PEA3 transfected: sc-173295 (B) 293T whole cell lysates.

RESEARCH USE

For research use only, not for use in diagnostic procedures.