



SZABO SCANDIC

Part of Europa Biosite

Produktinformation



Forschungsprodukte & Biochemikalien



Zellkultur & Verbrauchsmaterial



Diagnostik & molekulare Diagnostik



Laborgeräte & Service

Weitere Information auf den folgenden Seiten!
See the following pages for more information!



Lieferung & Zahlungsart

siehe unsere [Liefer- und Versandbedingungen](#)

Zuschläge

- Mindermengenzuschlag
- Trockeneiszuschlag
- Gefahrgutzuschlag
- Expressversand

SZABO-SCANDIC HandelsgmbH

Quellenstraße 110, A-1100 Wien

T. +43(0)1 489 3961-0

F. +43(0)1 489 3961-7

mail@szabo-scandic.com

www.szabo-scandic.com

[linkedin.com/company/szaboscandic](https://www.linkedin.com/company/szaboscandic) 

MCM7 (h2): 293T Lysate: sc-173959

BACKGROUND

The mini-chromosome maintenance (MCM) family of proteins, including MCM2, MCM3, MCM4 (Cdc21), MCM5 (Cdc46), MCM6 (Mis5) and MCM7 (Cdc47), are regulators of DNA replication that act to ensure replication occurs only once in the cell cycle. Expression of MCM proteins increases during cell growth, peaking at G₁ to S phase. The MCM proteins each contain an ATP-binding motif, which is predicted to mediate ATP-dependent opening of double-stranded DNA. MCM proteins are regulated by E2F transcription factors, which induce MCM expression, and by protein kinases, which interact with MCM proteins to maintain the post-replicative state of the cell. MCM2/MCM4 complexes function as substrates for Cdc2/cyclin B *in vitro*. Cleavage of MCM3, which can be prevented by caspase inhibitors, results in the inactivation during apoptosis of the MCM complex, which is composed of, at least, MCM2-6. A complex composed of MCM4, MCM6 and MCM7 has been shown to be involved in DNA helicase activity, and MCM5 is involved in IFN- γ -induced Stat1 α transcription activation.

REFERENCES

1. Koonin, E.V. 1993. A common set of conserved motifs in a vast variety of putative nucleic acid-dependent ATPases including MCM proteins involved in the initiation of eukaryotic DNA replication. *Nucleic Acids Res.* 21: 2541-2547.
2. Ishimi, Y. 1997. A DNA helicase activity is associated with an MCM4, 6, and 7 protein complex. *J. Biol. Chem.* 272: 24508-24513.
3. Leone, G., et al. 1998. E2F3 activity is regulated during the cell cycle and is required for the induction of S phase. *Genes Dev.* 12: 2120-2130.
4. Coverley, D., et al. 1998. Protein kinase inhibition in G₂ causes mammalian MCM proteins to reassociate with chromatin and restores ability to replicate. *Exp. Cell Res.* 238: 63-69.
5. Fujita, M., et al. 1998. Cell cycle- and chromatin binding state-dependent phosphorylation of human MCM heterohexameric complexes. A role for Cdc2 kinase. *J. Biol. Chem.* 273: 17095-17101.
6. Zhang, J.J., et al. 1998. Ser 727-dependent recruitment of MCM5 by Stat1 α in IFN- γ -induced transcriptional activation. *EMBO J.* 17: 6963-6971.
7. Schwab, B.L., et al. 1998. Selective proteolysis of the nuclear replication factor MCM3 in apoptosis. *Exp. Cell Res.* 238: 415-421.
8. Iwanaga, Y., et al. 1999. Human T cell leukemia virus type 1 tax protein abrogates interleukin-2 dependence in a mouse T cell line. *J. Virol.* 73: 1271-1277.

CHROMOSOMAL LOCATION

Genetic locus: MCM7 (human) mapping to 7q22.1.

PRODUCT

MCM7 (h2): 293T Lysate represents a lysate of human MCM7 transfected 293T cells and is provided as 100 μ g protein in 200 μ l SDS-PAGE buffer.

RESEARCH USE

For research use only, not for use in diagnostic procedures.

APPLICATIONS

MCM7 (h2): 293T Lysate is suitable as a Western Blotting positive control for human reactive MCM7 antibodies. Recommended use: 10-20 μ l per lane.

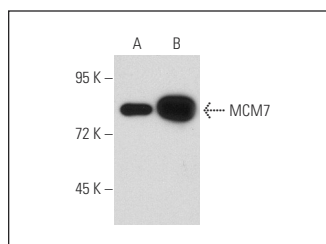
Control 293T Lysate: sc-117752 is available as a Western Blotting negative control lysate derived from non-transfected 293T cells.

MCM7 (G-7): sc-46687 is recommended as a positive control antibody for Western Blot analysis of enhanced human MCM7 expression in MCM7 transfected 293T cells (starting dilution 1:100, dilution range 1:100-1:1,000).

RECOMMENDED SUPPORT REAGENTS

To ensure optimal results, the following support reagents are recommended: 1) Western Blotting: use m-IgG κ BP-HRP: sc-516102 or m-IgG κ BP-HRP (Cruz Marker): sc-516102-CM (dilution range: 1:1000-1:10000), Cruz Marker[™] Molecular Weight Standards: sc-2035, UltraCruz[®] Blocking Reagent: sc-516214 and Western Blotting Luminol Reagent: sc-2048.

DATA



MCM7 (G-7): sc-46687. Western blot analysis of MCM7 expression in non-transfected: sc-117752 (A) and human MCM7 transfected: sc-173959 (B) 293T whole cell lysates.

STORAGE

Store at -20 $^{\circ}$ C. Repeated freezing and thawing should be minimized. Sample vial should be boiled once prior to use. Non-hazardous. No MSDS required.

PROTOCOLS

See our web site at www.scbt.com for detailed protocols and support products.