



SZABO SCANDIC

Part of Europa Biosite

Produktinformation



Forschungsprodukte & Biochemikalien



Zellkultur & Verbrauchsmaterial



Diagnostik & molekulare Diagnostik



Laborgeräte & Service

Weitere Information auf den folgenden Seiten!
See the following pages for more information!



Lieferung & Zahlungsart

siehe unsere [Liefer- und Versandbedingungen](#)

Zuschläge

- Mindermengenzuschlag
- Trockeneiszuschlag
- Gefahrgutzuschlag
- Expressversand

SZABO-SCANDIC HandelsgmbH

Quellenstraße 110, A-1100 Wien

T. +43(0)1 489 3961-0

F. +43(0)1 489 3961-7

mail@szabo-scandic.com

www.szabo-scandic.com

[linkedin.com/company/szaboscandic](https://www.linkedin.com/company/szaboscandic) 

CARD 9 (h): 293 Lysate: sc-174094

BACKGROUND

Membrane-associated guanylate kinase (MAGUK) family members localize to the plasma membrane and function as molecular scaffolds for the assembly of multi-protein complexes. The MAGUK family includes several mammalian proteins related to the *Drosophila* tumor suppressor discs-large (dlg) gene product such as postsynaptic proteins, GKAPs, the tight junction associated proteins (ZO-1-3) and the caspase-associated recruitment domain (CARD) proteins, CARD 6, CARD 8-12 and CARD 14. CARD 9 is the main transducer of Dectin-1 signals that consist of mediated myeloid cell activation, cytokine production and innate anti-fungal immunity. Dectin-1 is the main mammalian receptor that recognizes the fungal component zymosan. CARD 9 self-associates and has coiled-coil motifs that may function as oligomerization domains. Bcl10 interacts with CARD 9 and regulates the zymosan induced NFκB activation. Overexpression of CARD 9 correlates with the development of gastric B cell lymphoma.

REFERENCES

- Bertin, J., et al. 2001. CARD 9 is a novel caspase recruitment domain-containing protein that interacts with Bcl10/CLAP and activates NFκB. *J. Biol. Chem.* 275: 41082-41086.
- Wang, L., et al. 2001. CARD 10 is a novel caspase recruitment domain/membrane-associated guanylate kinase family member that interacts with Bcl10 and activates NFκB. *J. Biol. Chem.* 276: 21405-21409.
- Online Mendelian Inheritance in Man, OMIM™. 2002. Johns Hopkins University, Baltimore, MD. MIM Number: 607212. World Wide Web URL: <http://www.ncbi.nlm.nih.gov/omim/>
- Kono, T., et al. 2003. Molecular cloning and expression analysis of a novel caspase recruitment domain protein (CARD) in common carp *Cyprinus carpio* L. *Gene* 309: 57-64.
- Nakamura S., et al. 2005. Overexpression of caspase recruitment domain (CARD) membrane-associated guanylate kinase 1 (CARMA1) and CARD 9 in primary gastric B cell lymphoma. *Cancer* 104: 1885-1893.
- Gross, O., et al. 2006. CARD 9 controls a non-TLR signalling pathway for innate anti-fungal immunity. *Nature* 442: 651-656.
- Zhou, Y., et al. 2006. Distinct comparative genomic hybridisation profiles in gastric mucosa-associated lymphoid tissue lymphomas with and without t(11;18)(q21;q21). *Br. J. Haematol.* 133: 35-42.

CHROMOSOMAL LOCATION

Genetic locus: CARD9 (human) mapping to 9q34.3.

PRODUCT

CARD 9 (h): 293 Lysate represents a lysate of human CARD 9 transfected 293 cells and is provided as 100 µg protein in 200 µl SDS-PAGE buffer.

STORAGE

Store at -20° C. Repeated freezing and thawing should be minimized. Sample vial should be boiled once prior to use. Non-hazardous. No MSDS required.

APPLICATIONS

CARD 9 (h): 293 Lysate is suitable as a Western Blotting positive control for human reactive CARD 9 antibodies. Recommended use: 10-20 µl per lane.

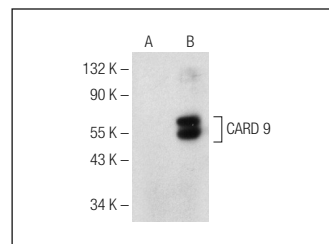
Control 293 Lysate: sc-110760 is available as a Western Blotting negative control lysate derived from non-transfected 293 cells.

CARD 9 (C-2): sc-374007 is recommended as a positive control antibody for Western Blot analysis of enhanced human CARD 9 expression in CARD 9 transfected 293 cells (starting dilution 1:100, dilution range 1:100-1:1,000).

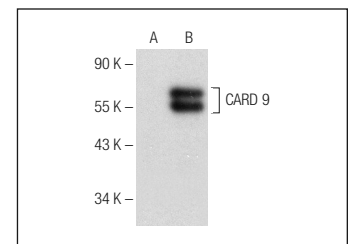
RECOMMENDED SUPPORT REAGENTS

To ensure optimal results, the following support reagents are recommended:
 1) Western Blotting: use m-IgGκ BP-HRP: sc-516102 or m-IgGκ BP-HRP (Cruz Marker): sc-516102-CM (dilution range: 1:1000-1:10000), Cruz Marker™ Molecular Weight Standards: sc-2035, UltraCruz® Blocking Reagent: sc-516214 and Western Blotting Luminol Reagent: sc-2048.

DATA



CARD 9 (C-2): sc-374007. Western blot analysis of CARD 9 expression in non-transfected: sc-117760 (A) and human CARD 9 transfected: sc-174094 (B) 293 whole cell lysates.



CARD 9 (A-B): sc-374569. Western blot analysis of CARD 9 expression in non-transfected: sc-110760 (A) and human CARD 9 transfected: sc-174094 (B) 293 whole cell lysates.

RESEARCH USE

For research use only, not for use in diagnostic procedures.

PROTOCOLS

See our web site at www.scbt.com for detailed protocols and support products.