



# SZABO SCANDIC

Part of Europa Biosite

## Produktinformation



Forschungsprodukte & Biochemikalien



Zellkultur & Verbrauchsmaterial



Diagnostik & molekulare Diagnostik



Laborgeräte & Service

Weitere Information auf den folgenden Seiten!  
See the following pages for more information!



### Lieferung & Zahlungsart

siehe unsere [Liefer- und Versandbedingungen](#)

### Zuschläge

- Mindermengenzuschlag
- Trockeneiszuschlag
- Gefahrgutzuschlag
- Expressversand

### SZABO-SCANDIC HandelsgmbH

Quellenstraße 110, A-1100 Wien

T. +43(0)1 489 3961-0

F. +43(0)1 489 3961-7

[mail@szabo-scandic.com](mailto:mail@szabo-scandic.com)

[www.szabo-scandic.com](http://www.szabo-scandic.com)

[linkedin.com/company/szaboscandic](https://www.linkedin.com/company/szaboscandic) 

# PCDHB15 (h2): 293T Lysate: sc-174444

## BACKGROUND

Protocadherins are a large family of cadherin-like cell adhesion proteins that are involved in the establishment and maintenance of neuronal connections in the brain. There are three protocadherin gene clusters designated  $\alpha$ ,  $\beta$  and  $\gamma$ , all of which contain multiple tandemly arranged genes. PCDHB15 (protocadherin  $\beta$  15) is a 787 amino acid protein that is one of 16 proteins in the protocadherin  $\beta$  cluster. Unlike the  $\alpha$  and  $\gamma$  gene clusters whose genes are spliced to downstream constant region exons during transcription, members of the  $\beta$  cluster (such as PCDHB15) do not use constant region exons to produce mRNAs. As a result, each protocadherin  $\beta$  gene encodes the transmembrane, extracellular and short cytoplasmic domains of the protein. Localized to the cell membrane, PCDHB15 is a single-pass type I membrane protein that contains six cadherin domains.

## REFERENCES

1. Wu, Q., Zhang, T., Cheng, J.F., Kim, Y., Grimwood, J., Schmutz, J., Dickson, M., Noonan, J.P., Zhang, M.Q., Myers, R.M. and Maniatis, T. 2001. Comparative DNA sequence analysis of mouse and human protocadherin gene clusters. *Genome Res.* 11: 389-404.
2. Vanhalst, K., Kools, P., Vanden Eynde, E. and van Roy, F. 2001. The human and murine protocadherin  $\beta$  one-exon gene families show high evolutionary conservation, despite the difference in gene number. *FEBS Lett.* 495: 120-125.
3. Online Mendelian Inheritance in Man, OMIM<sup>™</sup>. 2002. Johns Hopkins University, Baltimore, MD. MIM Number: 606341. World Wide Web URL: <http://www.ncbi.nlm.nih.gov/omim/>
4. Miki, R., Hattori, K., Taguchi, Y., Tada, M.N., Isosaka, T., Hidaka, Y., Hirabayashi, T., Hashimoto, R., Fukuzako, H. and Yagi, T. 2005. Identification and characterization of coding single-nucleotide polymorphisms within human protocadherin  $\alpha$  and  $\beta$  gene clusters. *Gene* 349: 1-14.
5. Yang, X., Chen, M.W., Terry, S., Vacherot, F., Chopin, D.K., Bemis, D.L., Kitajewski, J., Benson, M.C., Guo, Y. and Buttyan, R. 2005. A human- and male-specific protocadherin that acts through the Wnt signaling pathway to induce neuroendocrine transdifferentiation of prostate cancer cells. *Cancer Res.* 65: 5263-5271.
6. Sjöblom, T., Jones, S., Wood, L.D., Parsons, D.W., Lin, J., Barber, T.D., Mandelker, D., Leary, R.J., Ptak, J., Silliman, N., Szabo, S., Buckhaults, P., Farrell, C., Meeh, P., Markowitz, S.D., Willis, J., Dawson, D., Willson, J.K., Gazdar, A.F., Hartigan, J., Wu, L., Liu, C., Parmigiani, G., et al. 2006. The consensus coding sequences of human breast and colorectal cancers. *Science* 314: 268-274.

## CHROMOSOMAL LOCATION

Genetic locus: PCDHB15 (human) mapping to 5q31.3.

## PRODUCT

PCDHB15 (h2): 293T Lysate represents a lysate of human PCDHB15 transfected 293T cells and is provided as 100  $\mu$ g protein in 200  $\mu$ l SDS-PAGE buffer.

## APPLICATIONS

PCDHB15 (h2): 293T Lysate is suitable as a Western Blotting positive control for human reactive PCDHB15 antibodies.

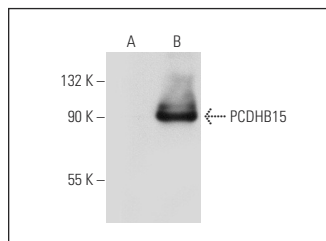
Control 293T Lysate: sc-117752 is available as a Western Blotting negative control lysate derived from non-transfected 293T cells.

PCDHB15/Pcdhb22 (F-10): sc-133257 is recommended as a positive control antibody for Western Blot analysis of enhanced human PCDHB15 expression in PCDHB15 transfected 293T cells (starting dilution 1:100, dilution range 1:100-1:1,000).

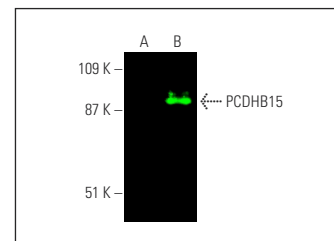
## RECOMMENDED SUPPORT REAGENTS

To ensure optimal results, the following support reagents are recommended: 1) Western Blotting: use m-IgG $\kappa$  BP-HRP: sc-516102 or m-IgG $\kappa$  BP-HRP (Cruz Marker): sc-516102-CM (dilution range: 1:1000-1:10000), Cruz Marker<sup>™</sup> Molecular Weight Standards: sc-2035, UltraCruz<sup>®</sup> Blocking Reagent: sc-516214 and Western Blotting Luminol Reagent: sc-2048.

## DATA



PCDHB15/Pcdhb22 (F-10): sc-133257. Western blot analysis of PCDHB15 expression in non-transfected: sc-117752 (A) and human PCDHB15 transfected: sc-174444 (B) 293T whole cell lysates.



PCDHB15/Pcdhb22 (F-10): sc-133257. Near-infrared western blot analysis of PCDHB15 expression in non-transfected: sc-117752 (A) and human PCDHB15 transfected: sc-174444 (B) 293T whole cell lysates. Blocked with UltraCruz<sup>®</sup> Blocking Reagent: sc-516214. Detection reagent used: m-IgG $\kappa$  BP-CFL 680: sc-516180.

## STORAGE

Store at -20° C. Repeated freezing and thawing should be minimized. Sample vial should be boiled once prior to use. Non-hazardous. No MSDS required.

## RESEARCH USE

For research use only, not for use in diagnostic procedures.

## PROTOCOLS

See our web site at [www.scbt.com](http://www.scbt.com) for detailed protocols and support products.