



# SZABO SCANDIC

Part of Europa Biosite

## Produktinformation



Forschungsprodukte & Biochemikalien



Zellkultur & Verbrauchsmaterial



Diagnostik & molekulare Diagnostik



Laborgeräte & Service

Weitere Information auf den folgenden Seiten!  
See the following pages for more information!



### Lieferung & Zahlungsart

siehe unsere [Liefer- und Versandbedingungen](#)

### Zuschläge

- Mindermengenzuschlag
- Trockeneiszuschlag
- Gefahrgutzuschlag
- Expressversand

### SZABO-SCANDIC HandelsgmbH

Quellenstraße 110, A-1100 Wien

T. +43(0)1 489 3961-0

F. +43(0)1 489 3961-7

[mail@szabo-scandic.com](mailto:mail@szabo-scandic.com)

[www.szabo-scandic.com](http://www.szabo-scandic.com)

[linkedin.com/company/szaboscandic](https://www.linkedin.com/company/szaboscandic) 

# KLF16 (h): 293T Lysate: sc-174472

## BACKGROUND

Krüppel-like factors (KLFs) comprise a family of evolutionarily conserved zinc finger-containing transcription factors with diverse regulatory functions in cell growth, proliferation, differentiation and embryogenesis. Individual members of the Sp1-like/KLF family can function either as activators or repressors, depending on which promoter they bind and which coregulators they interact with. KLF16 (Krüppel-like factor 16), also known as BTEB4, DRRF (dopamine receptor-regulating factor) or NSLP2, is a 252 amino acid protein that contains 3 C<sub>2</sub>H<sub>2</sub>-type zinc fingers and belongs to the KLF transcription factor family. Localized to the nucleus and expressed at high levels in brain, KLF16 functions as a transcription factor that binds specifically to GT and GC boxes, displacing the transcription factors Sp1 and Sp3 and effectively modulating dopaminergic transmission in the brain.

## REFERENCES

- Zhang, J.S., et al. 2001. A conserved  $\alpha$ -helical motif mediates the interaction of Sp1-like transcriptional repressors with the corepressor mSin3A. *Mol. Cell. Biol.* 21: 5041-5049.
- Hwang, C.K., et al. 2001. Dopamine receptor regulating factor, DRRF: a zinc finger transcription factor. *Proc. Natl. Acad. Sci. USA* 98: 7558-7563.
- Kaczynski, J.A., et al. 2002. Functional analysis of basic transcription element (BTE)-binding protein (BTEB) 3 and BTEB4, a novel Sp1-like protein, reveals a subfamily of transcriptional repressors for the BTE site of the cytochrome P4501A1 gene promoter. *Biochem. J.* 366: 873-882.
- D'Souza, U.M., et al. 2002. Developmental expression of the zinc finger transcription factor DRRF (dopamine receptor regulating factor). *Mech. Dev.* 110: 197-201.
- Online Mendelian Inheritance in Man, OMIM™. 2002. Johns Hopkins University, Baltimore, MD. MIM Number: 606139. World Wide Web URL: <http://www.ncbi.nlm.nih.gov/omim/>
- Lee, S.H., et al. 2003. Genomic organization and promoter characterization of the murine dopamine receptor regulating factor (DRRF) gene. *Gene* 304: 193-199.
- Chiambaretta, F., et al. 2004. Cell and tissue specific expression of human Krüppel-like transcription factors in human ocular surface. *Mol. Vis.* 10: 901-909.
- Gutiérrez-Aguilar, R., et al. 2007. Analysis of KLF transcription factor family gene variants in type 2 diabetes. *BMC Med. Genet.* 8: 53.
- Parker-Katirae, L., et al. 2007. Identification of the imprinted KLF14 transcription factor undergoing human-specific accelerated evolution. *PLoS Genet.* 3: e65.

## CHROMOSOMAL LOCATION

Genetic locus: KLF16 (human) mapping to 19p13.3.

## PRODUCT

KLF16 (h): 293T Lysate represents a lysate of human KLF16 transfected 293T cells and is provided as 100  $\mu$ g protein in 200  $\mu$ l SDS-PAGE buffer.

## APPLICATIONS

KLF16 (h): 293T Lysate is suitable as a Western Blotting positive control for human reactive KLF16 antibodies. Recommended use: 10-20  $\mu$ l per lane.

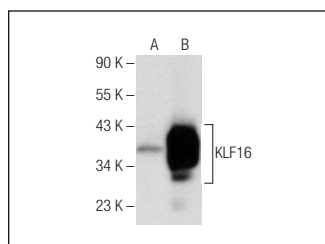
Control 293T Lysate: sc-117752 is available as a Western Blotting negative control lysate derived from non-transfected 293T cells.

KLF16 (F-4): sc-377519 is recommended as a positive control antibody for Western Blot analysis of enhanced human KLF16 expression in KLF16 transfected 293T cells (starting dilution 1:100, dilution range 1:100-1:1,000).

## RECOMMENDED SUPPORT REAGENTS

To ensure optimal results, the following support reagents are recommended: 1) Western Blotting: use m-IgG $\kappa$  BP-HRP: sc-516102 or m-IgG $\kappa$  BP-HRP (Cruz Marker): sc-516102-CM (dilution range: 1:1000-1:10000), Cruz Marker™ Molecular Weight Standards: sc-2035, UltraCruz® Blocking Reagent: sc-516214 and Western Blotting Luminol Reagent: sc-2048.

## DATA



KLF16 (F-4): sc-377519. Western blot analysis of KLF16 expression in non-transfected: sc-117752 (A) and human KLF16 transfected: sc-174472 (B) 293T whole cell lysates.

## STORAGE

Store at -20° C. Repeated freezing and thawing should be minimized. Sample vial should be boiled once prior to use. Non-hazardous. No MSDS required.

## RESEARCH USE

For research use only, not for use in diagnostic procedures.

## PROTOCOLS

See our web site at [www.scbt.com](http://www.scbt.com) for detailed protocols and support products.