



SZABO SCANDIC

Part of Europa Biosite

Produktinformation



Forschungsprodukte & Biochemikalien



Zellkultur & Verbrauchsmaterial



Diagnostik & molekulare Diagnostik



Laborgeräte & Service

Weitere Information auf den folgenden Seiten!
See the following pages for more information!



Lieferung & Zahlungsart

siehe unsere [Liefer- und Versandbedingungen](#)

Zuschläge

- Mindermengenzuschlag
- Trockeneiszuschlag
- Gefahrgutzuschlag
- Expressversand

SZABO-SCANDIC HandelsgmbH

Quellenstraße 110, A-1100 Wien

T. +43(0)1 489 3961-0

F. +43(0)1 489 3961-7

mail@szabo-scandic.com

www.szabo-scandic.com

[linkedin.com/company/szaboscandic](https://www.linkedin.com/company/szaboscandic) 

SEC22B (h): 293T Lysate: sc-174592

BACKGROUND

The *S. cerevisiae* protein Sec22p functions as a v-SNARE of transport vesicles and plays a role in both retrograde and anterograde vesicular transport between the Golgi and the endoplasmic reticulum (ER). There are three mammalian homologs to Sec22p, namely SEC22A, SEC22B and SEC22C. SEC22B (SEC22 vesicle trafficking protein homolog B, *S. cerevisiae*), also known as SEC22L1 (SEC22 vesicle-trafficking protein-like 1) or ERS-24, is a single pass type IV membrane protein that belongs to the synaptobrevin family. SEC22B contains one v-SNARE coiled-coil homology domain and one longin domain. Localizing to the ER-Golgi intermediate compartment and found on ER-derived vesicles, SEC22B functions as a v-SNARE and is required for ER-Golgi transport. The cognate t-SNARE found on pre-Golgi intermediate compartments is comprised of Syntaxin 5, Bet1 and GS27. In addition, SEC22B can be found in a SNARE complex with Syntaxin 18, Nip1 and USE1 (p31).

REFERENCES

- Zhang, T., Wong, S.H., Tang, B.L., Xu, Y. and Hong, W. 1999. Morphological and functional association of SEC22B/ERS-24 with the pre-Golgi intermediate compartment. *Mol. Biol. Cell* 10: 435-453.
- Online Mendelian Inheritance in Man, OMIM[™]. 2002. Johns Hopkins University, Baltimore, MD. MIM Number: 604029. World Wide Web URL: <http://www.ncbi.nlm.nih.gov/omim/>
- Kagan, J.C., Stein, M.P., Pypaert, M. and Roy, C.R. 2004. *Legionella* subvert the functions of Rab 1 and SEC22B to create a replicative organelle. *J. Exp. Med.* 199: 1201-1211.
- Joglekar, A.P. and Hay, J.C. 2005. Evidence for regulation of ER/Golgi SNARE complex formation by HSC 70 chaperones. *Eur. J. Cell Biol.* 84: 529-542.
- Becker, T., Volchuk, A. and Rothman, J.E. 2005. Differential use of endoplasmic reticulum membrane for phagocytosis in J774 macrophages. *Proc. Natl. Acad. Sci. USA* 102: 4022-4026.
- Hatsuzawa, K., Tamura, T., Hashimoto, H., Hashimoto, H., Yokoya, S., Miura, M., Nagaya, H. and Wada, I. 2006. Involvement of Syntaxin 18, an endoplasmic reticulum (ER)-localized SNARE protein, in ER-mediated phagocytosis. *Mol. Biol. Cell* 17: 3964-3977.
- Wen, W., Chen, L., Wu, H., Sun, X., Zhang, M. and Banfield, D.K. 2006. Identification of the yeast R-SNARE Nyv1p as a novel longin domain-containing protein. *Mol. Biol. Cell* 17: 4282-4299.
- Zeuschner, D., Geerts, W.J., van Donselaar, E., Humbel, B.M., Slot, J.W., Koster, A.J. and Klumperman, J. 2006. Immuno-electron tomography of ER exit sites reveals the existence of free COPII-coated transport carriers. *Nat. Cell Biol.* 8: 377-383.
- Aoki, T., Kojima, M., Tani, K. and Tagaya, M. 2008. SEC22B-dependent assembly of endoplasmic reticulum Q-SNARE proteins. *Biochem. J.* 410: 93-100.

STORAGE

Store at -20° C. Repeated freezing and thawing should be minimized. Sample vial should be boiled once prior to use. Non-hazardous. No MSDS required.

CHROMOSOMAL LOCATION

Genetic locus: SEC22B (human) mapping to 1q21.1.

PRODUCT

SEC22B (h): 293T Lysate represents a lysate of human SEC22B transfected 293T cells and is provided as 100 µg protein in 200 µl SDS-PAGE buffer.

APPLICATIONS

SEC22B (h): 293T Lysate is suitable as a Western Blotting positive control for human reactive SEC22B antibodies.

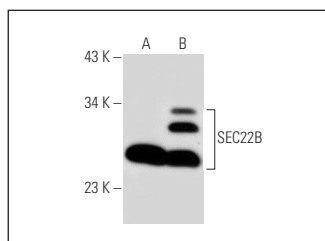
Control 293T Lysate: sc-117752 is available as a Western Blotting negative control lysate derived from non-transfected 293T cells.

SEC22B (29-F7): sc-101267 is recommended as a positive control antibody for Western Blot analysis of enhanced human SEC22B expression in SEC22B transfected 293T cells (starting dilution 1:100, dilution range 1:100-1:1,000).

RECOMMENDED SUPPORT REAGENTS

To ensure optimal results, the following support reagents are recommended:
1) Western Blotting: use m-IgGλ. BP-HRP: sc-516132 or m-IgGλ. BP-HRP (Cruz Marker): sc-516132-CM (dilution range: 1:1000-1:10000), Cruz Marker[™] Molecular Weight Standards: sc-2035, UltraCruz[®] Blocking Reagent: sc-516214 and Western Blotting Luminol Reagent: sc-2048.

DATA



SEC22B (29-F7): sc-101267. Western blot analysis of SEC22B expression in non-transfected: sc-117752 (A) and human SEC22B transfected: sc-174592 (B) 293T whole cell lysates.

RESEARCH USE

For research use only, not for use in diagnostic procedures.

PROTOCOLS

See our web site at www.scbt.com for detailed protocols and support products.