



SZABO SCANDIC

Part of Europa Biosite

Produktinformation



Forschungsprodukte & Biochemikalien



Zellkultur & Verbrauchsmaterial



Diagnostik & molekulare Diagnostik



Laborgeräte & Service

Weitere Information auf den folgenden Seiten!
See the following pages for more information!



Lieferung & Zahlungsart

siehe unsere [Liefer- und Versandbedingungen](#)

Zuschläge

- Mindermengenzuschlag
- Trockeneiszuschlag
- Gefahrgutzuschlag
- Expressversand

SZABO-SCANDIC HandelsgmbH

Quellenstraße 110, A-1100 Wien

T. +43(0)1 489 3961-0

F. +43(0)1 489 3961-7

mail@szabo-scandic.com

www.szabo-scandic.com

[linkedin.com/company/szaboscandic](https://www.linkedin.com/company/szaboscandic) 

4E-BP1 (h2): 293T Lysate: sc-174963

BACKGROUND

The translation of proteins from eukaryotic mRNA is initiated by the multi-subunit complex eIF-4F, which associates with the mRNA 5' cap structure. eIF-4E, a component of eIF-4F, is responsible for binding to the 5' cap structure and for the assembly of the eIF-4F complex. The regulatory protein 4E-BP1, also referred to as PHAS-I, inhibits eIF-4E function. Phosphorylation of 4E-BP1 by S6 kinase p70, MAP kinases or PKCs causes the disassociation of 4E-BP1 from eIF-4E, promoting translation. A protein that is functionally related to 4E-BP1, designated 4E-BP2, also associates with eIF-4E.

REFERENCES

- Lin, T.A., Kong, X., Haystead, T.A., Pause, A., Belsham, G., Sonenberg, N. and Lawrence, J.C., Jr. 1994. PHAS-I as a link between mitogen-activated protein kinase and translation initiation. *Science* 266: 653-656.
- Rau, M., Ohlmann, T., Morley, S.J. and Pain, V.M. 1996. A reevaluation of the cap-binding protein, eIF-4E, as a rate-limiting factor for initiation of translation in reticulocyte lysate. *J. Biol. Chem.* 271: 8983-8990.
- Whalen, S.G., Gingras, A.C., Amankwa, L., Mader, S., Branton, P.E., Aebersold, R. and Sonenberg, N. 1996. Phosphorylation of eIF-4E on serine 209 by protein kinase C is inhibited by the translational repressors, 4E-binding proteins. *J. Biol. Chem.* 271: 11831-11837.
- Diggle, T.A., Moule, S.K., Avison, M.B., Flynn, A., Foulstone, E.J., Proud, C.G. and Denton, R.M. 1996. Both Rapamycin-sensitive and -insensitive pathways are involved in the phosphorylation of the initiation factor-4E-binding protein (4E-BP1) in response to Insulin in rat epididymal fat-cells. *Biochem. J.* 316: 447-453.
- Beretta, L., Gingras, A.C., Svitkin, Y.V., Hall, M.N. and Sonenberg, N. 1996. Rapamycin blocks the phosphorylation of 4E-BP1 and inhibits cap-dependent initiation of translation. *EMBO J.* 15: 658-664.
- Mendez, R., Myers, M.G., Jr., White, M.F. and Rhoads, R.E. 1996. Stimulation of protein synthesis, eukaryotic translation initiation factor 4E phosphorylation, and PHAS-I phosphorylation by Insulin requires Insulin receptor substrate 1 and phosphatidylinositol 3-kinase. *Mol. Cell. Biol.* 16: 2857-2864.
- von Manteuffel, S.R., Gingras, A.C., Ming, X.F., Sonenberg, N. and Thomas, G. 1996. 4E-BP1 phosphorylation is mediated by the FRAP-p70s6k pathway and is independent of mitogen-activated protein kinase. *Proc. Natl. Acad. Sci. USA* 93: 4076-4080.

CHROMOSOMAL LOCATION

Genetic locus: EIF4EBP1 (human) mapping to 8p11.23.

PRODUCT

4E-BP1 (h2): 293T Lysate represents a lysate of human 4E-BP1 transfected 293T cells and is provided as 100 µg protein in 200 µl SDS-PAGE buffer.

STORAGE

Store at -20° C. Repeated freezing and thawing should be minimized. Sample vial should be boiled once prior to use. Non-hazardous. No MSDS required.

APPLICATIONS

4E-BP1 (h2): 293T Lysate is suitable as a Western Blotting positive control for human reactive 4E-BP1 antibodies. Recommended use: 10-20 µl per lane.

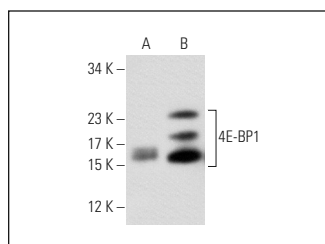
Control 293T Lysate: sc-117752 is available as a Western Blotting negative control lysate derived from non-transfected 293T cells.

4E-BP1 (11G12C11): sc-81149 is recommended as a positive control antibody for Western Blot analysis of enhanced human 4E-BP1 expression in 4E-BP1 transfected 293T cells (starting dilution 1:100, dilution range 1:100-1:1,000).

RECOMMENDED SUPPORT REAGENTS

To ensure optimal results, the following support reagents are recommended:
 1) Western Blotting: use m-IgGκ BP-HRP: sc-516102 or m-IgGκ BP-HRP (Cruz Marker): sc-516102-CM (dilution range: 1:1000-1:10000), Cruz Marker™ Molecular Weight Standards: sc-2035, UltraCruz® Blocking Reagent: sc-516214 and Western Blotting Luminol Reagent: sc-2048.

DATA



4E-BP1 (11G12C11): sc-81149. Western blot analysis of 4E-BP1 expression in non-transfected: sc-117752 (A) and human 4E-BP1 transfected: sc-174963 (B) 293T whole cell lysates.

RESEARCH USE

For research use only, not for use in diagnostic procedures.

PROTOCOLS

See our web site at www.scbt.com for detailed protocols and support products.