



SZABO SCANDIC

Part of Europa Biosite

Produktinformation



Forschungsprodukte & Biochemikalien



Zellkultur & Verbrauchsmaterial



Diagnostik & molekulare Diagnostik



Laborgeräte & Service

Weitere Information auf den folgenden Seiten!
See the following pages for more information!



Lieferung & Zahlungsart

siehe unsere [Liefer- und Versandbedingungen](#)

Zuschläge

- Mindermengenzuschlag
- Trockeneiszuschlag
- Gefahrgutzuschlag
- Expressversand

SZABO-SCANDIC HandelsgmbH

Quellenstraße 110, A-1100 Wien

T. +43(0)1 489 3961-0

F. +43(0)1 489 3961-7

mail@szabo-scandic.com

www.szabo-scandic.com

[linkedin.com/company/szaboscandic](https://www.linkedin.com/company/szaboscandic) 

CD42b (h2): 293T Lysate: sc-174990

BACKGROUND

CD42a is a single-chain membrane glycoprotein that forms a noncovalent complex with CD42b. CD42b, also known as glycoprotein Ib α (GPIb α) is a membrane glycoprotein that is composed of α and β chains. The CD42b β chain is also designated CD42c, and is expressed on platelets and megakaryocytes. CD42a and CD42b are also present on platelets and megakaryocytes, and the complex is a major component of the platelet surface. The complex acts as a receptor for von Willebrand's factor and as a von Willebrand's factor-dependent adhesion receptor.

REFERENCES

1. Lopez, J.A., Chung, D.W., Fujikawa, K., Hagen, F.S., Davie, E.W. and Roth, G.J. 1988. The α and β chains of human platelet glycoprotein Ib are both transmembrane proteins containing a leucine-rich amino acid sequence. *Proc. Natl. Acad. Sci. USA* 85: 2135-2139.
2. Roth, G.J. 1992. Platelets and blood vessels: the adhesion event. *Immunol. Today* 13: 100-105.
3. Hickey, M.J. and Roth, G.J. 1993. Characterization of the gene encoding human platelet glycoprotein IX. *J. Biol. Chem.* 268: 3438-3443.
4. Kelly, M.D., Essex, D.W., Shapiro, S.S., Meloni, F.J., Druck, T., Huebner, K. and Konkle, B.A. 1994. Complementary DNA cloning of the alternatively expressed endothelial cell glycoprotein Ib β (GPIb β) and localization of the GPIb β gene to chromosome 22. *J. Clin. Invest.* 93: 2417-2424.
5. Yagi, M., Edelhoff, S., Distech, C.M. and Roth, G.J. 1994. Structural characterization and chromosomal location of the gene encoding human platelet glycoprotein Ib β . *J. Biol. Chem.* 269: 17424-17427.
6. Lopez, J.A., Weisman, S., Sanan, D.A., Sih, T., Chambers, M. and Li, C.Q. 1994. Glycoprotein (GP)Ib β is the critical subunit linking GPIb α and GPIX in the GPIb-IX complex. Analysis of partial complexes. *J. Biol. Chem.* 269: 23716-23721.
7. Kunishima, S., Miura, H., Fukutani, H., Yoshida, H., Osumi, K., Kobayashi, S., Ohno, R. and Naoe, T. 1994. Bernard-Soulier syndrome Kagoshima: Ser 444 \rightarrow stop mutation of glycoprotein (GP)Ib α resulting in circulating truncated GPIb α and surface expression of GPIb β and GPIX. *Blood* 84: 3356-3362.

CHROMOSOMAL LOCATION

Genetic locus: GP1BA (human) mapping to 17p13.2.

PRODUCT

CD42b (h2): 293T Lysate represents a lysate of human CD42b transfected 293T cells and is provided as 100 μ g protein in 200 μ l SDS-PAGE buffer.

STORAGE

Store at -20 $^{\circ}$ C. Repeated freezing and thawing should be minimized. Sample vial should be boiled once prior to use. Non-hazardous. No MSDS required.

RESEARCH USE

For research use only, not for use in diagnostic procedures.

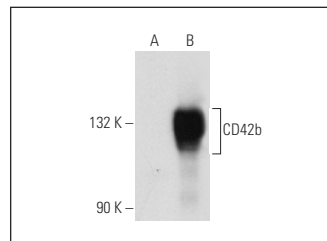
APPLICATIONS

CD42b (h2): 293T Lysate is suitable as a Western Blotting positive control for human reactive CD42b antibodies.

Control 293T Lysate: sc-117752 is available as a Western Blotting negative control lysate derived from non-transfected 293T cells.

CD42b (MM2/174): sc-80728 is recommended as a positive control antibody for Western Blot analysis of enhanced human CD42b expression in CD42b transfected 293T cells (starting dilution 1:100, dilution range 1:100-1:1,000).

DATA



CD42b (MM2/174): sc-80728. Western blot analysis of CD42b expression in non-transfected: sc-117752 (A) and human CD42b transfected: sc-174990 (B) 293T whole cell lysates.

PROTOCOLS

See our web site at www.scbt.com for detailed protocols and support products.