



# SZABO SCANDIC

Part of Europa Biosite

## Produktinformation



Forschungsprodukte & Biochemikalien



Zellkultur & Verbrauchsmaterial



Diagnostik & molekulare Diagnostik



Laborgeräte & Service

Weitere Information auf den folgenden Seiten!  
See the following pages for more information!



### Lieferung & Zahlungsart

siehe unsere [Liefer- und Versandbedingungen](#)

### Zuschläge

- Mindermengenzuschlag
- Trockeneiszuschlag
- Gefahrgutzuschlag
- Expressversand

### SZABO-SCANDIC HandelsgmbH

Quellenstraße 110, A-1100 Wien

T. +43(0)1 489 3961-0

F. +43(0)1 489 3961-7

[mail@szabo-scandic.com](mailto:mail@szabo-scandic.com)

[www.szabo-scandic.com](http://www.szabo-scandic.com)

[linkedin.com/company/szaboscandic](https://www.linkedin.com/company/szaboscandic) 

# SLC25A3 (h5): 293T Lysate: sc-113441

## BACKGROUND

Inner membrane mitochondrial proteins are responsible for the transport of metabolites across the mitochondrial membrane. SLC25A3 (solute carrier family 25 (mitochondrial carrier; phosphate carrier), member 3), also known as PHC or PTP (phosphate transport protein), is a 362 amino acid multi-pass inner mitochondrial membrane protein that belongs to the mitochondrial carrier family. SLC25A3 transports phosphate groups (and cotransports H<sup>+</sup>) to the mitochondrial matrix from cytosol, and exists as two alternatively spliced isoforms designated SLC25A3 isoform A and B. Highly expressed in pancreas, skeletal muscle and heart, SLC25A3 contains three solcar repeats and is encoded by a gene that maps to human chromosome 12q23.1. Defects in the gene encoding SLC25A3 are linked to mitochondrial phosphate carrier deficiency (MPCD), a disorder of oxidative phosphorylation that leads to death within the first year of life.

## REFERENCES

1. Jabs, E.W., et al. 1994. Chromosomal localization of genes required for the terminal steps of oxidative metabolism:  $\alpha$  and  $\gamma$  subunits of ATP synthase and the phosphate carrier. *Hum. Genet.* 93: 600-602.
2. Dolce, V., et al. 1994. The sequences of human and bovine genes of the phosphate carrier from mitochondria contain evidence of alternatively spliced forms. *J. Biol. Chem.* 269: 10451-10460.
3. Marsh, S., et al. 1995. Chromosomal localization of the mitochondrial phosphate carrier gene PHC to 12q23. *Genomics* 29: 814-815.
4. Huizing, M., et al. 1998. Human mitochondrial transmembrane metabolite carriers: tissue distribution and its implication for mitochondrial disorders. *J. Bioenerg. Biomembr.* 30: 277-284.
5. Mayr, J.A., et al. 2007. Mitochondrial phosphate-carrier deficiency: a novel disorder of oxidative phosphorylation. *Am. J. Hum. Genet.* 80: 478-484.
6. Online Mendelian Inheritance in Man, OMIM<sup>™</sup>. 2007. Johns Hopkins University, Baltimore, MD. MIM Number: 600370. World Wide Web URL: <http://www.ncbi.nlm.nih.gov/omim/>

## CHROMOSOMAL LOCATION

Genetic locus: SLC25A3 (human) mapping to 12q23.1.

## PRODUCT

SLC25A3 (h5): 293T Lysate represents a lysate of human SLC25A3 transfected 293T cells and is provided as 100  $\mu$ g protein in 200  $\mu$ l SDS-PAGE buffer.

## STORAGE

Store at -20° C. Repeated freezing and thawing should be minimized. Sample vial should be boiled once prior to use. Non-hazardous. No MSDS required.

## PROTOCOLS

See our web site at [www.scbt.com](http://www.scbt.com) for detailed protocols and support products.

## APPLICATIONS

SLC25A3 (h5): 293T Lysate is suitable as a Western Blotting positive control for human reactive SLC25A3 antibodies. Recommended use: 10-20  $\mu$ l per lane.

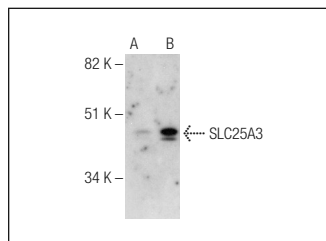
Control 293T Lysate: sc-117752 is available as a Western Blotting negative control lysate derived from non-transfected 293T cells.

SLC25A3 (F-1): sc-376742 is recommended as a positive control antibody for Western Blot analysis of enhanced human SLC25A3 expression in SLC25A3 transfected 293T cells (starting dilution 1:100, dilution range 1:100-1:1,000).

## RECOMMENDED SUPPORT REAGENTS

To ensure optimal results, the following support reagents are recommended: 1) Western Blotting: use m-IgG $\kappa$  BP-HRP: sc-516102 or m-IgG $\kappa$  BP-HRP (Cruz Marker): sc-516102-CM (dilution range: 1:1000-1:10000), Cruz Marker<sup>™</sup> Molecular Weight Standards: sc-2035, UltraCruz<sup>®</sup> Blocking Reagent: sc-516214 and Western Blotting Luminol Reagent: sc-2048.

## DATA



SLC25A3 (F-1): sc-376742. Western blot analysis of SLC25A3 expression in non-transfected: sc-117752 (A) and human SLC25A3 transfected: sc-110513 (B) 293T whole cell lysates.

## RESEARCH USE

For research use only, not for use in diagnostic procedures.