



# SZABO SCANDIC

Part of Europa Biosite

## Produktinformation



Forschungsprodukte & Biochemikalien



Zellkultur & Verbrauchsmaterial



Diagnostik & molekulare Diagnostik



Laborgeräte & Service

Weitere Information auf den folgenden Seiten!  
See the following pages for more information!



### Lieferung & Zahlungsart

siehe unsere [Liefer- und Versandbedingungen](#)

### Zuschläge

- Mindermengenzuschlag
- Trockeneiszuschlag
- Gefahrgutzuschlag
- Expressversand

### SZABO-SCANDIC HandelsgmbH

Quellenstraße 110, A-1100 Wien

T. +43(0)1 489 3961-0

F. +43(0)1 489 3961-7

[mail@szabo-scandic.com](mailto:mail@szabo-scandic.com)

[www.szabo-scandic.com](http://www.szabo-scandic.com)

[linkedin.com/company/szaboscandic](https://www.linkedin.com/company/szaboscandic) 

# NNT-1/BSF-3 (h): 293T Lysate: sc-175983

## BACKGROUND

Neurotrophin-1/B cell-stimulating factor-3 (NNT-1/BSF-3, also known as cardiotrophin-like cytokine) is found mainly in lymph nodes and spleen. NNT-1/BSF-3 induces tyrosine phosphorylation of the signal transducing receptor molecule glycoprotein 130 (gp130), leukemia inhibitory factor receptor  $\beta$ , and signal transducer and activator of transcription 3 in the SK-N-MC human neuroblastoma cells. The activation of gp130 distinguishes a group of cytokines referred to as the IL-6 family. They all show the conserved location of one intron in their gene structure and, in common with cytokines of the hematopoietin superfamily, the presence of a four-helix bundle in their protein structure. In addition to features typical of IL-6 family cytokines, including neurotropic effects, NNT-1/BSF-3 shows B cell-stimulating capability.

## REFERENCES

1. Yamasaki, K., Taga, T., Hirata, Y., Yawata, H., Kawanishi, Y., Seed, B., Taniguchi, T., Hirano, T. and Kishimoto, T. 1988. Cloning and expression of the human interleukin-6 (BSF-2/IFN- $\beta$ 2) receptor. *Science* 241: 825-828.
2. Kishimoto, T., Akira, S., Narazaki, M. and Taga, T. 1995. Interleukin-6 family of cytokines and gp130. *Blood* 86: 1243-1254.
3. Taga, T. and Kishimoto, T. 1997. Gp130 and the interleukin-6 family of cytokines. *Annu. Rev. Immunol.* 15: 797-819.
4. Grotzinger, J., Kurapkat, G., Wollmer, A., Kalai, M. and Rose-John, S. 1997. The family of the IL-6-type cytokines: specificity and promiscuity of the receptor complexes. *Proteins* 27: 96-109.
5. Senaldi, G., Varnum, B.C., Sarmiento, U., Starnes, C., Lile, J., Scully, S., Guo, J., Elliott, G., McNinch, J., Shaklee, C.L., Freeman, D., Manu, F., Simonet, W.S., Boone, T. and Chang, M.S. 1999. Novel neurotrophin-1/B cell-stimulating factor-3: a cytokine of the IL-6 family. *Proc. Natl. Acad. Sci. USA* 96: 11458-11463.

## CHROMOSOMAL LOCATION

Genetic locus: CLCF1 (human) mapping to 11q13.2.

## PRODUCT

NNT-1/BSF-3 (h): 293T Lysate represents a lysate of human NNT-1/BSF-3 transfected 293T cells and is provided as 100  $\mu$ g protein in 200  $\mu$ l SDS-PAGE buffer.

## APPLICATIONS

NNT-1/BSF-3 (h): 293T Lysate is suitable as a Western Blotting positive control for human reactive NNT-1/BSF-3 antibodies. Recommended use: 10-20  $\mu$ l per lane.

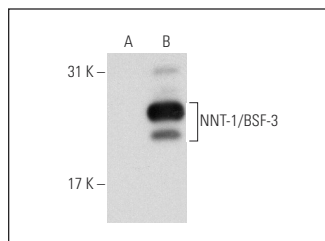
Control 293T Lysate: sc-117752 is available as a Western Blotting negative control lysate derived from non-transfected 293T cells.

NNT-1/BSF-3 (985-1): sc-74243 is recommended as a positive control antibody for Western Blot analysis of enhanced human NNT-1/BSF-3 expression in NNT-1/BSF-3 transfected 293T cells (starting dilution 1:100, dilution range 1:100-1:1,000).

## STORAGE

Store at  $-20^{\circ}$  C. Repeated freezing and thawing should be minimized. Sample vial should be boiled once prior to use. Non-hazardous. No MSDS required.

## DATA



NNT-1/BSF-3 (985-1): sc-74243. Western blot analysis of NNT-1/BSF-3 expression in non-transfected: sc-117752 (A) and human NNT-1/BSF-3 transfected: sc-175983 (B) 293T whole cell lysates.

## RESEARCH USE

For research use only, not for use in diagnostic procedures.

## PROTOCOLS

See our web site at [www.scbt.com](http://www.scbt.com) for detailed protocols and support products.