



SZABO SCANDIC

Part of Europa Biosite

Produktinformation



Forschungsprodukte & Biochemikalien



Zellkultur & Verbrauchsmaterial



Diagnostik & molekulare Diagnostik



Laborgeräte & Service

Weitere Information auf den folgenden Seiten!
See the following pages for more information!



Lieferung & Zahlungsart

siehe unsere [Liefer- und Versandbedingungen](#)

Zuschläge

- Mindermengenzuschlag
- Trockeneiszuschlag
- Gefahrgutzuschlag
- Expressversand

SZABO-SCANDIC HandelsgmbH

Quellenstraße 110, A-1100 Wien

T. +43(0)1 489 3961-0

F. +43(0)1 489 3961-7

mail@szabo-scandic.com

www.szabo-scandic.com

[linkedin.com/company/szaboscandic](https://www.linkedin.com/company/szaboscandic) 

Int-6 (h2): 293T Lysate: sc-176131

BACKGROUND

Int-6, also designated eIF3 ϵ , eIF3-p46, eIF3-p48 and eukaryotic translation initiation factor 3, subunit 6, regulates translation and protein degradation through binding with three complexes: the eukaryotic translation initiation factor 3 (eIF3), the proteasome regulatory lid and the constitutive photomorphogenesis 9 signalosome. eIF3 is a complex that mediates assembly of 40S ribosomal subunits on mRNA bearing either a 5'-cap or an internal ribosome entry site (IRES). The Int-6 gene is a site of mouse mammary tumor virus (MMTV) integration in murine tumors. Reducing Int-6 expression by RNA interference in HeLa cells alters mitosis progression through defects in spindle formation, chromosome segregation and cytokinesis. These aberrations appear to correlate with an inhibition of cyclin B-Cdk1 kinase activity due to a protracted inhibitory phosphorylated state of Cdk1.

REFERENCES

- Diella, F., et al. 1997. Characterization of the Int-6 mammary tumor gene product. *DNA Cell Biol.* 16: 839-847.
- Asano, K., et al. 1997. The translation initiation factor eIF3-p48 subunit is encoded by Int-6, a site of frequent integration by the mouse mammary tumor virus genome. *J. Biol. Chem.* 272: 23477-23480.
- Guo, J., et al. 2000. Characterization of the interaction between the interferon-induced protein P56 and the Int-6 protein encoded by a locus of insertion of the mouse mammary tumor virus. *J. Virol.* 74: 1892-1899.
- Morris-Desbois, C., et al. 2001. The human protein HSPC021 interacts with Int-6 and is associated with eukaryotic translation initiation factor 3. *J. Biol. Chem.* 276: 45988-45995.
- Rasmussen, S.B., et al. 2001. Evidence for the transforming activity of a truncated Int-6 gene, *in vitro*. *Oncogene* 20: 5291-5301.
- Yen, H.C., et al. 2003. Int-6—a link between the proteasome and tumorigenesis. *Cell Cycle* 2: 81-83.
- von Arnim, A.G., et al. 2003. Protein homeostasis: a degrading role for Int-6/eIF3 ϵ . *Curr. Biol.* 13: R323-R325.
- Watkins, S.J., et al. 2004. Cell cycle-related variation in subcellular localization of eIF3 ϵ /Int-6 in human fibroblasts. *Cell Prolif.* 37: 149-160.
- Morris, C., et al. 2005. Silencing of human Int-6 impairs mitosis progression and inhibits cyclin B-Cdk1 activation. *Oncogene* 24: 1203-1211.

CHROMOSOMAL LOCATION

Genetic locus: EIF3S6 (human) mapping to 8q23.1.

PRODUCT

Int-6 (h2): 293T Lysate represents a lysate of human Int-6 transfected 293T cells and is provided as 100 μ g protein in 200 μ l SDS-PAGE buffer.

STORAGE

Store at -20° C. Repeated freezing and thawing should be minimized. Sample vial should be boiled once prior to use. Non-hazardous. No MSDS required.

APPLICATIONS

Int-6 (h2): 293T Lysate is suitable as a Western Blotting positive control for human reactive Int-6 antibodies. Recommended use: 10-20 μ l per lane.

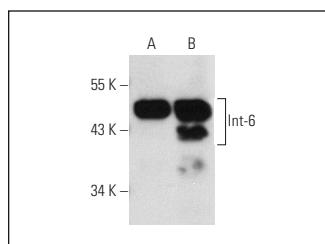
Control 293T Lysate: sc-117752 is available as a Western Blotting negative control lysate derived from non-transfected 293T cells.

Int-6 (A-11): sc-133251 is recommended as a positive control antibody for Western Blot analysis of enhanced human Int-6 expression in Int-6 transfected 293T cells (starting dilution 1:100, dilution range 1:100-1:1,000).

RECOMMENDED SUPPORT REAGENTS

To ensure optimal results, the following support reagents are recommended: 1) Western Blotting: use m-IgG κ BP-HRP: sc-516102 or m-IgG κ BP-HRP (Cruz Marker): sc-516102-CM (dilution range: 1:1000-1:10000), Cruz Marker™ Molecular Weight Standards: sc-2035, UltraCruz® Blocking Reagent: sc-516214 and Western Blotting Luminol Reagent: sc-2048.

DATA



Int-6 (A-11): sc-133251. Western blot analysis of Int-6 expression in non-transfected: sc-117752 (A) and human Int-6 transfected: sc-176131 (B) 293T whole cell lysates.

RESEARCH USE

For research use only, not for use in diagnostic procedures.

PROTOCOLS

See our web site at www.scbt.com for detailed protocols and support products.