



SZABO SCANDIC

Part of Europa Biosite

Produktinformation



Forschungsprodukte & Biochemikalien



Zellkultur & Verbrauchsmaterial



Diagnostik & molekulare Diagnostik



Laborgeräte & Service

Weitere Information auf den folgenden Seiten!
See the following pages for more information!



Lieferung & Zahlungsart

siehe unsere [Liefer- und Versandbedingungen](#)

Zuschläge

- Mindermengenzuschlag
- Trockeneiszuschlag
- Gefahrgutzuschlag
- Expressversand

SZABO-SCANDIC HandelsgmbH

Quellenstraße 110, A-1100 Wien

T. +43(0)1 489 3961-0

F. +43(0)1 489 3961-7

mail@szabo-scandic.com

www.szabo-scandic.com

[linkedin.com/company/szaboscandic](https://www.linkedin.com/company/szaboscandic) 

Elf-4 (h2): 293T Lysate: sc-176225

BACKGROUND

The Ets-1 family of transcription factors has a conserved DNA binding domain through which it plays an important role in >cellular proliferation, differentiation, hematopoiesis and angiogenesis. This domain, also known as the Ets domain, binds to DNA sequences containing the consensus sequence 5'-WGGA-3', which is known as the Ets-binding domain. Elf-4, also known as myeloid Elf-1-like factor, ELF4 or MEF, is a 663 amino acid member of the Ets-1 family. Localized to the nucleus, Elf-4 is highly expressed in placenta and myeloid leukemia cells, with lower levels of expression lung, heart, thymus, spleen, colon, ovary and peripheral blood lymphocytes. Functioning primarily to activate the promoters of hematopoietic growth factor genes, such as GM-CSF, IL-3 and IL-8, Elf-4 has also been shown to activate the Perforin 1 promoter in natural killer (NK) cells, suggesting a possible role in tumorigenesis.

REFERENCES

1. Miyazaki, Y., et al. 1996. MEF, a novel transcription factor with an Elf-1 like DNA binding domain but distinct transcriptional activating properties. *Oncogene* 13: 1721-1729.
2. Kai, H., et al. 1999. Myeloid Elf-1-like factor upregulates lysozyme transcription in epithelial cells. *J. Biol. Chem.* 274: 20098-20102.
3. Mao, S., et al. 1999. Functional and physical interactions between AML1 proteins and an ETS protein, MEF: implications for the pathogenesis of t(8;21)-positive leukemias. *Mol. Cell. Biol.* 19: 3635-3644.
4. Suico, M.A., et al. 2002. Functional dissection of the ETS transcription factor MEF. *Biochim. Biophys. Acta* 1577: 113-120.
5. Lacorazza, H.D., et al. 2002. The ETS protein MEF plays a critical role in perforin gene expression and the development of natural killer and NK-T cells. *Immunity* 17: 437-449.
6. Hedvat, C.V., et al. 2004. Myeloid Elf-1-like factor is a potent activator of interleukin-8 expression in hematopoietic cells. *J. Biol. Chem.* 279: 6395-6400.
7. Suico, M.A., et al. 2004. Myeloid Elf-1-like factor, an ETS transcription factor, upregulates lysozyme transcription in epithelial cells through interaction with promyelocytic leukemia protein. *J. Biol. Chem.* 279: 19091-19098.
8. Yao, J.J., et al. 2007. Tumor promoting properties of the ETS protein MEF in ovarian cancer. *Oncogene* 26: 4032-4037.

CHROMOSOMAL LOCATION

Genetic locus: ELF4 (human) mapping to Xq26.1.

PRODUCT

Elf-4 (h2): 293T Lysate represents a lysate of human Elf-4 transfected 293T cells and is provided as 100 µg protein in 200 µl SDS-PAGE buffer.

STORAGE

Store at 4° C, ****DO NOT FREEZE****. Stable for one year from the date of shipment. Non-hazardous. No MSDS required.

APPLICATIONS

Elf-4 (h2): 293T Lysate is suitable as a Western Blotting positive control for human reactive Elf-4 antibodies. Recommended use: 10-20 µl per lane.

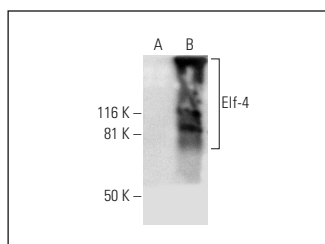
Control 293T Lysate: sc-117752 is available as a Western Blotting negative control lysate derived from non-transfected 293T cells.

Elf-4 (F-11): sc-390689 is recommended as a positive control antibody for Western Blot analysis of enhanced human Elf-4 expression in Elf-4 transfected 293T cells (starting dilution 1:100, dilution range 1:100-1:1,000).

RECOMMENDED SUPPORT REAGENTS

To ensure optimal results, the following support reagents are recommended: 1) Western Blotting: use m-IgGκ BP-HRP: sc-516102 or m-IgGκ BP-HRP (Cruz Marker): sc-516102-CM (dilution range: 1:1000-1:10000), Cruz Marker™ Molecular Weight Standards: sc-2035, UltraCruz® Blocking Reagent: sc-516214 and Western Blotting Luminol Reagent: sc-2048.

DATA



Elf-4 (F-11): sc-390689. Western blot analysis of Elf-4 expression in non-transfected: sc-117752 (A) and human Elf-4 transfected: sc-176225 (B) 293T whole cell lysates.

RESEARCH USE

For research use only, not for use in diagnostic procedures.

PROTOCOLS

See our web site at www.scbt.com for detailed protocols and support products.