



SZABO SCANDIC

Part of Europa Biosite

Produktinformation



Forschungsprodukte & Biochemikalien



Zellkultur & Verbrauchsmaterial



Diagnostik & molekulare Diagnostik



Laborgeräte & Service

Weitere Information auf den folgenden Seiten!
See the following pages for more information!



Lieferung & Zahlungsart

siehe unsere [Liefer- und Versandbedingungen](#)

Zuschläge

- Mindermengenzuschlag
- Trockeneiszuschlag
- Gefahrgutzuschlag
- Expressversand

SZABO-SCANDIC HandelsgmbH

Quellenstraße 110, A-1100 Wien

T. +43(0)1 489 3961-0

F. +43(0)1 489 3961-7

mail@szabo-scandic.com

www.szabo-scandic.com

[linkedin.com/company/szaboscandic](https://www.linkedin.com/company/szaboscandic) 

Dvl-3 (h3): 293T Lysate: sc-176335

BACKGROUND

Mammalian homologs of the *Drosophila* dishevelled (Dsh) gene have been identified, including Dvl-1, Dvl-2 and Dvl-3. The mammalian dishevelled proteins contain three homologous domains, two of which are unrelated to any other known protein. The third region is homologous to the discs-large homology domain of *Drosophila* discs-large-1, a tumor suppressor protein. Like their *Drosophila* counterpart, the dishevelled proteins are thought to be involved in embryogenesis. Overexpression of Dvl-1 has been shown to inhibit the phosphorylation of Tau by GSK-3 β . This finding may prove to be important in Alzheimer's studies, which have shown that Tau is hyperphosphorylated. In *Drosophila*, Dsh is a component of the frizzled signaling pathway. Both mammalian dishevelled and frizzled proteins are components of the Wnt signaling pathway.

REFERENCES

1. Sussman, D.J., Klingensmith, J., Salinas, P., Adams, P.S., Nusse, R. and Perrimon, N. 1994. Isolation and characterization of a mouse homolog of the *Drosophila* segment polarity gene dishevelled. *Dev. Biol.* 166: 73-86.
2. Krasnow, R.E., Wong, L.L. and Adler, P.N. 1995. Dishevelled is a component of the frizzled signaling pathway in *Drosophila*. *Development* 121: 4095-4102.
3. Yang-Snyder, J., Miller, J.R., Brown, J.D., Lai, C.J. and Moon, R.T. 1996. A frizzled homolog functions in a vertebrate Wnt signaling pathway. *Curr. Biol.* 6: 1302-1306.
4. Pizzuti, A., Novelli, G., Mari, A., Ratti, A., Colosimo, A., Amati, F., Penso, D., Sangiuolo, F., Calabrese, G., Palka, G., Silani, V., Gennarelli, M., Mingareli, R., Scarlato, G., Scambler, P. and Dallapiccola, B. 1996. Human homologue sequences to the *Drosophila* dishevelled segment-polarity are deleted in the DiGeorge syndrome. *Am. J. Hum. Genet.* 58: 722-729.
5. Tsang, M., Lijam, N., Yang, Y., Beier, D.R., Wynshaw-Boris, A. and Sussman, D.J. 1996. Isolation and characterization of mouse dishevelled-3. *Dev. Dyn.* 207: 253-262.
6. Pizzuti, A., Amati, F., Calabrese, G., Mari, A., Colosimo, A., Silani, V., Giardino, L., Ratti, A., Penso, D., Calza, L., Palka, G., Scarlato, G., Novelli, G. and Dallapiccola, B. 1996. cDNA characterization and chromosomal mapping of two human homologues of the *Drosophila* dishevelled polarity gene. *Hum. Mol. Genet.* 5: 953-958.
7. Semenov, M.V. and Snyder, M. 1997. Human dishevelled genes constitute a DHR-containing multigene family. *Genomics* 42: 302-310.
8. Wagner, U., Brownlees, J., Irving, N.G., Lucas, F.R., Salinas, P.C. and Miller, C.C. 1997. Overexpression of the mouse dishevelled-1 protein inhibits GSK-3 β -mediated phosphorylation of Tau in transfected mammalian cells. *FEBS Lett.* 411: 369-372.

CHROMOSOMAL LOCATION

Genetic locus: DVL3 (human) mapping to 3q27.1.

RESEARCH USE

For research use only, not for use in diagnostic procedures.

PRODUCT

Dvl-3 (h3): 293T Lysate represents a lysate of human Dvl-3 transfected 293T cells and is provided as 100 μ g protein in 200 μ l SDS-PAGE buffer.

APPLICATIONS

Dvl-3 (h3): 293T Lysate is suitable as a Western Blotting positive control for human reactive Dvl-3 antibodies. Recommended use: 10-20 μ l per lane.

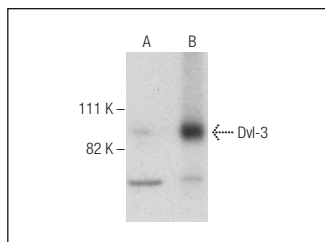
Control 293T Lysate: sc-117752 is available as a Western Blotting negative control lysate derived from non-transfected 293T cells.

Dvl-3 (C-3): sc-365581 is recommended as a positive control antibody for Western Blot analysis of enhanced human Dvl-3 expression in Dvl-3 transfected 293T cells (starting dilution 1:100, dilution range 1:100-1:1,000).

RECOMMENDED SUPPORT REAGENTS

To ensure optimal results, the following support reagents are recommended:
 1) Western Blotting: use m-IgG κ BP-HRP: sc-516102 or m-IgG κ BP-HRP (Cruz Marker): sc-516102-CM (dilution range: 1:1000-1:10000), Cruz Marker™ Molecular Weight Standards: sc-2035, UltraCruz® Blocking Reagent: sc-516214 and Western Blotting Luminol Reagent: sc-2048.

DATA



Dvl-3 (C-3): sc-365581. Western blot analysis of Dvl-3 expression in non-transfected: sc-117752 (A) and human Dvl-3 transfected: sc-176335 (B) 293T whole cell lysates.

STORAGE

Store at -20° C. Repeated freezing and thawing should be minimized. Sample vial should be boiled once prior to use. Non-hazardous. No MSDS required.

PROTOCOLS

See our web site at www.scbt.com for detailed protocols and support products.