



SZABO SCANDIC

Part of Europa Biosite

Produktinformation



Forschungsprodukte & Biochemikalien



Zellkultur & Verbrauchsmaterial



Diagnostik & molekulare Diagnostik



Laborgeräte & Service

Weitere Information auf den folgenden Seiten!
See the following pages for more information!



Lieferung & Zahlungsart

siehe unsere [Liefer- und Versandbedingungen](#)

Zuschläge

- Mindermengenzuschlag
- Trockeneiszuschlag
- Gefahrgutzuschlag
- Expressversand

SZABO-SCANDIC HandelsgmbH

Quellenstraße 110, A-1100 Wien

T. +43(0)1 489 3961-0

F. +43(0)1 489 3961-7

mail@szabo-scandic.com

www.szabo-scandic.com

[linkedin.com/company/szaboscandic](https://www.linkedin.com/company/szaboscandic) 

14-3-3 β (h): 293T Lysate: sc-176767

BACKGROUND

14-3-3 proteins regulate many cellular processes relevant to cancer biology, notably apoptosis, mitogenic signaling and cell-cycle checkpoints. Seven isoforms comprise this family of signaling intermediates, denoted 14-3-3 β , γ , ϵ , ζ , η , θ and σ . 14-3-3 proteins form dimers that present two binding sites for ligand proteins, thereby bringing together two proteins that may not otherwise associate. These ligands largely share a 14-3-3 consensus binding motif and exhibit serine/threonine phosphorylation. 14-3-3 proteins function in broad regulation of these ligand proteins, by cytoplasmic sequestration, occupation of interaction domains and import/export sequences, prevention of degradation, activation/repression of enzymatic activity and facilitation of protein modification, and thus loss of expression contributes to a vast array of pathogenic cellular activities.

REFERENCES

- Morrison, D. 1994. 14-3-3: modulators of signaling proteins? *Science* 266: 56-57.
- Muratake, T., et al. 1996. Structural organization and chromosomal assignment of the human 14-3-3 β chain gene (YWHAH). *Genomics* 36: 63-69.
- Yaffe, M.B., et al. 1997. The structural basis for 14-3-3 phosphopeptide binding specificity. *Cell* 91: 961-971.
- Megidish, T., et al. 1998. A novel sphingosine-dependent protein kinase (SDK1) specifically phosphorylates certain isoforms of 14-3-3 protein. *J. Biol. Chem.* 273: 21834-21845.
- Lim, R., et al. 2002. MADM, a novel adaptor protein that mediates phosphorylation of the 14-3-3 binding site of myeloid leukemia factor 1. *J. Biol. Chem.* 277: 40997-41008.

CHROMOSOMAL LOCATION

Genetic locus: YWHAB (human) mapping to 20q13.12.

PRODUCT

14-3-3 β (h): 293T Lysate represents a lysate of human 14-3-3 β transfected 293T cells and is provided as 100 μ g protein in 200 μ l SDS-PAGE buffer.

APPLICATIONS

14-3-3 β (h): 293T Lysate is suitable as a Western Blotting positive control for human reactive 14-3-3 β antibodies. Recommended use: 10-20 μ l per lane.

Control 293T Lysate: sc-117752 is available as a Western Blotting negative control lysate derived from non-transfected 293T cells.

14-3-3 β (60C10): sc-59419 is recommended as a positive control antibody for Western Blot analysis of enhanced human 14-3-3 β expression in 14-3-3 β transfected 293T cells (starting dilution 1:100, dilution range 1:100-1:1,000).

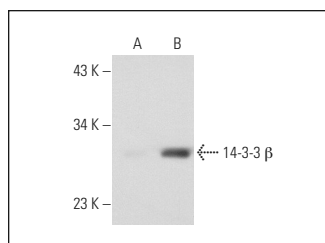
STORAGE

Store at -20° C. Repeated freezing and thawing should be minimized. Sample vial should be boiled once prior to use. Non-hazardous. No MSDS required.

RESEARCH USE

For research use only, not for use in diagnostic procedures.

DATA



14-3-3 β (60C10): sc-59419. Western blot analysis of 14-3-3 β expression in non-transfected: sc-117752 (A) and human 14-3-3 β transfected: sc-176767 (B) 293T whole cell lysates.

PROTOCOLS

See our web site at www.scbt.com for detailed protocols and support products.