



SZABO SCANDIC

Part of Europa Biosite

Produktinformation



Forschungsprodukte & Biochemikalien



Zellkultur & Verbrauchsmaterial



Diagnostik & molekulare Diagnostik



Laborgeräte & Service

Weitere Information auf den folgenden Seiten!
See the following pages for more information!



Lieferung & Zahlungsart

siehe unsere [Liefer- und Versandbedingungen](#)

Zuschläge

- Mindermengenzuschlag
- Trockeneiszuschlag
- Gefahrgutzuschlag
- Expressversand

SZABO-SCANDIC HandelsgmbH

Quellenstraße 110, A-1100 Wien

T. +43(0)1 489 3961-0

F. +43(0)1 489 3961-7

mail@szabo-scandic.com

www.szabo-scandic.com

[linkedin.com/company/szaboscandic](https://www.linkedin.com/company/szaboscandic) 

14-3-3 β (h2): 293T Lysate: sc-176768

BACKGROUND

14-3-3 proteins regulate many cellular processes relevant to cancer biology, notably apoptosis, mitogenic signaling and cell-cycle checkpoints. Seven isoforms comprise this family of signaling intermediates, denoted 14-3-3 β , γ , ϵ , ζ , η , θ and σ . 14-3-3 proteins form dimers that present two binding sites for ligand proteins, thereby bringing together two proteins that may not otherwise associate. These ligands largely share a 14-3-3 consensus binding motif and exhibit serine/threonine phosphorylation. 14-3-3 proteins function in broad regulation of these ligand proteins, by cytoplasmic sequestration, occupation of interaction domains and import/export sequences, prevention of degradation, activation/repression of enzymatic activity and facilitation of protein modification, and thus loss of expression contributes to a vast array of pathogenic cellular activities.

REFERENCES

- Morrison, D. 1994. 14-3-3: modulators of signaling proteins? *Science* 266: 56-57.
- Muratake, T., et al. 1996. Structural organization and chromosomal assignment of the human 14-3-3 β chain gene (YWHAH). *Genomics* 36: 63-69.
- Yaffe, M.B., et al. 1997. The structural basis for 14-3-3 phosphopeptide binding specificity. *Cell* 91: 961-971.
- Megidish, T., et al. 1998. A novel sphingosine-dependent protein kinase (SDK1) specifically phosphorylates certain isoforms of 14-3-3 protein. *J. Biol. Chem.* 273: 21834-21845.
- Lim, R., et al. 2002. MADM, a novel adaptor protein that mediates phosphorylation of the 14-3-3 binding site of myeloid leukemia factor 1. *J. Biol. Chem.* 277: 40997-41008.
- Yu, T., et al. 2002. The 4.1/Ezrin/Radixin/Moesin domain of the DAL-1/Protein 4.1B tumour suppressor interacts with 14-3-3 proteins. *Biochem. J.* 365: 783-789.
- Hermeking, H. 2003. The 14-3-3 cancer connection. *Nat. Rev. Cancer* 3: 931-943.
- Paul, A.L., et al. 2005. Isoform-specific subcellular localization among 14-3-3 proteins in *Arabidopsis* seems to be driven by client interactions. *Mol. Biol. Cell* 16: 1735-1743.

CHROMOSOMAL LOCATION

Genetic locus: YWHAB (human) mapping to 20q13.12.

PRODUCT

14-3-3 β (h2): 293T Lysate represents a lysate of human 14-3-3 β transfected 293T cells and is provided as 100 μ g protein in 200 μ l SDS-PAGE buffer.

STORAGE

Store at -20° C. Repeated freezing and thawing should be minimized. Sample vial should be boiled once prior to use. Non-hazardous. No MSDS required.

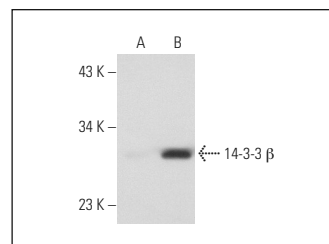
APPLICATIONS

14-3-3 β (h2): 293T Lysate is suitable as a Western Blotting positive control for human reactive 14-3-3 β antibodies. Recommended use: 10-20 μ l per lane.

Control 293T Lysate: sc-117752 is available as a Western Blotting negative control lysate derived from non-transfected 293T cells.

14-3-3 β (60C10): sc-59419 is recommended as a positive control antibody for Western Blot analysis of enhanced human 14-3-3 β expression in 14-3-3 β transfected 293T cells (starting dilution 1:100, dilution range 1:100-1:1,000).

DATA



14-3-3 β (60C10): sc-59419. Western blot analysis of 14-3-3 β expression in non-transfected: sc-117752 (A) and human 14-3-3 β transfected: sc-176768 (B) 293T whole cell lysates.

RESEARCH USE

For research use only, not for use in diagnostic procedures.

PROTOCOLS

See our web site at www.scbt.com for detailed protocols and support products.