



SZABO SCANDIC

Part of Europa Biosite

Produktinformation



Forschungsprodukte & Biochemikalien



Zellkultur & Verbrauchsmaterial



Diagnostik & molekulare Diagnostik



Laborgeräte & Service

Weitere Information auf den folgenden Seiten!
See the following pages for more information!



Lieferung & Zahlungsart

siehe unsere [Liefer- und Versandbedingungen](#)

Zuschläge

- Mindermengenzuschlag
- Trockeneiszuschlag
- Gefahrgutzuschlag
- Expressversand

SZABO-SCANDIC HandelsgmbH

Quellenstraße 110, A-1100 Wien

T. +43(0)1 489 3961-0

F. +43(0)1 489 3961-7

mail@szabo-scandic.com

www.szabo-scandic.com

[linkedin.com/company/szaboscandic](https://www.linkedin.com/company/szaboscandic) 

ALDH1L1 (h6): 293 Lysate: sc-176816

BACKGROUND

Aldehyde dehydrogenases (ALDHs) mediate NADP⁺-dependent oxidation of aldehydes into acids during detoxification of alcohol-derived acetaldehyde, lipid peroxidation and metabolism of corticosteroids, biogenic amines and neurotransmitters. ALDH1L1 (aldehyde dehydrogenase 1 family member L1), also known as FTHFD or 10-FTHFD (10-formyltetrahydrofolate dehydrogenase), is a cytosolic protein that is developmentally regulated in the cerebellum. ALDH1L1 binds to folate and catalyzes the conversion of 10-formyltetrahydrofolate (10-FTHF) to tetrahydrofolate (THF). This suggests a possible role for ALDH1L1 in the regulation of cellular THF levels as well as in the inhibition of cell proliferation (as 10-FTHF is essential for the synthesis of purine). In addition, the overexpression of ALDH1L1 can restrict cell proliferation *in vitro*.

REFERENCES

- Champion, K.M., Cook, R.J., Tollaksen, S.L. and Giometti, C.S. 1994. Identification of a heritable deficiency of the folate-dependent enzyme 10-formyltetrahydrofolate dehydrogenase in mice. *Proc. Natl. Acad. Sci. USA* 91: 11338-11342.
- Vasilou, V., Pappa, A. and Petersen, D.R. 2000. Role of aldehyde dehydrogenases in endogenous and xenobiotic metabolism. *Chem. Biol. Interact.* 129: 1-19.
- Online Mendelian Inheritance in Man, OMIM™. 2002. Johns Hopkins University, Baltimore, MD. MIM Number: 600249. World Wide Web URL: <http://www.ncbi.nlm.nih.gov/omim/>
- Sládek, N.E. 2003. Human aldehyde dehydrogenases: potential pathological, pharmacological, and toxicological impact. *J. Biochem. Mol. Toxicol.* 17: 7-23.
- Strolin Benedetti, M., Whomsley, R. and Baltus, E. 2006. Involvement of enzymes other than CYPs in the oxidative metabolism of xenobiotics. *Expert Opin. Drug Metab. Toxicol.* 2: 895-921.
- Lee, K.M., Lan, Q., Krickler, A., Purdue, M.P., Grulich, A.E., Vajdic, C.M., Turner, J., Whitby, D., Kang, D., Chanock, S., Rothman, N. and Armstrong, B.K. 2007. One-carbon metabolism gene polymorphisms and risk of non-Hodgkin lymphoma in Australia. *Hum. Genet.* 122: 525-533.
- Stevens, V.L., McCullough, M.L., Pavluck, A.L., Talbot, J.T., Feigelson, H.S., Thun, M.J. and Calle, E.E. 2007. Association of polymorphisms in one-carbon metabolism genes and postmenopausal breast cancer incidence. *Cancer Epidemiol. Biomarkers Prev.* 16: 1140-1147.
- Anthony, T.E. and Heintz, N. 2007. The folate metabolic enzyme ALDH1L1 is restricted to the midline of the early CNS, suggesting a role in human neural tube defects. *J. Comp. Neurol.* 500: 368-383.
- Cahoy, J.D., Emery, B., Kaushal, A., Foo, L.C., Zamanian, J.L., Christopherson, K.S., Xing, Y., Lubischer, J.L., Krieg, P.A., Krupenko, S.A., Thompson, W.J. and Barres, B.A. 2008. A transcriptome database for astrocytes, neurons, and oligodendrocytes: a new resource for understanding brain development and function. *J. Neurosci.* 28: 264-278.

STORAGE

Store at -20° C. Repeated freezing and thawing should be minimized. Sample vial should be boiled once prior to use. Non-hazardous. No MSDS required.

CHROMOSOMAL LOCATION

Genetic locus: ALDH1L1 (human) mapping to 3q21.3.

PRODUCT

ALDH1L1 (h6): 293 Lysate represents a lysate of human ALDH1L1 transfected 293 cells and is provided as 100 µg protein in 200 µl SDS-PAGE buffer.

APPLICATIONS

ALDH1L1 (h6): 293 Lysate is suitable as a Western Blotting positive control for human reactive ALDH1L1 antibodies.

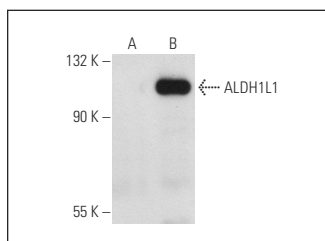
Control 293 Lysate: sc-110760 is available as a Western Blotting negative control lysate derived from non-transfected 293 cells.

ALDH1L1 (YY8): sc-100497 is recommended as a positive control antibody for Western Blot analysis of enhanced human ALDH1L1 expression in ALDH1L1 transfected 293 cells (starting dilution 1:100, dilution range 1:100-1:1,000).

RECOMMENDED SUPPORT REAGENTS

To ensure optimal results, the following support reagents are recommended:
 1) Western Blotting: use m-IgGκ BP-HRP: sc-516102 or m-IgGκ BP-HRP (Cruz Marker): sc-516102-CM (dilution range: 1:1000-1:10000), Cruz Marker™ Molecular Weight Standards: sc-2035, UltraCruz® Blocking Reagent: sc-516214 and Western Blotting Luminol Reagent: sc-2048.

DATA



ALDH1L1 (YY8): sc-100497. Western blot analysis of ALDH1L1 expression in non-transfected: sc-110760 (A) and human ALDH1L1 transfected: sc-176816 (B) 293 whole cell lysates.

RESEARCH USE

For research use only, not for use in diagnostic procedures.

PROTOCOLS

See our web site at www.scbt.com for detailed protocols and support products.