



# SZABO SCANDIC

Part of Europa Biosite

## Produktinformation



Forschungsprodukte & Biochemikalien



Zellkultur & Verbrauchsmaterial



Diagnostik & molekulare Diagnostik



Laborgeräte & Service

Weitere Information auf den folgenden Seiten!  
See the following pages for more information!



### Lieferung & Zahlungsart

siehe unsere [Liefer- und Versandbedingungen](#)

### Zuschläge

- Mindermengenzuschlag
- Trockeneiszuschlag
- Gefahrgutzuschlag
- Expressversand

### SZABO-SCANDIC HandelsgmbH

Quellenstraße 110, A-1100 Wien

T. +43(0)1 489 3961-0

F. +43(0)1 489 3961-7

[mail@szabo-scandic.com](mailto:mail@szabo-scandic.com)

[www.szabo-scandic.com](http://www.szabo-scandic.com)

[linkedin.com/company/szaboscandic](https://www.linkedin.com/company/szaboscandic) 

# C/EBP $\beta$ (h): 293T Lysate: sc-176940

## BACKGROUND

CCAAT-enhancer binding proteins (C/EBP) are basic region/leucine zipper (bZIP) transcription factors selectively expressed during the differentiation of liver, adipose tissue, blood cells and the endocrine pancreas. C/EBP  $\beta$  is a member of the C/EBP transcription factor family. The C/EBP  $\beta$  gene encodes several isoforms containing truncated transcription activation domains due to the alternative translational initiation at multiple AUG start sites. Initiation of translation at the in-frame AUGs forms four C/EBP  $\beta$  isoforms. C/EBP  $\beta$  is also known as interleukin 6-dependent DNA-binding protein (IL6DBP), liver activator protein (LAP) or liver-enriched transcriptional activator protein transcription factor 5 (TCF5). C/EBP  $\beta$  contributes to the regulation of the acute phase response in hepatocytes. Stat3 has an important function in IL-6-mediated transcription of the C/EBP  $\beta$  gene that has direct implication for acute phase response in liver cells. The C/EBP  $\beta$  form requires phosphorylation for its DNA binding ability, and increase binding of C/EBP  $\beta$  isoforms during acute-phase reaction occurs through its upregulation and structural modification.

## REFERENCES

1. Grigoriou, I., et al. 1998. Participation of two isoforms of C/EBP  $\beta$  transcription factor in the acute-phase regulation of the rat haptoglobin gene. *Cell Biol. Int.* 22: 685-693.
2. Hsieh, C.C., et al. 1998. Effects of age on the posttranscriptional regulation of C/EBP  $\alpha$  and C/EBP  $\beta$  isoform synthesis in control and LPS-treated livers. *Mol. Biol. Cell* 9: 1479-1494.
3. Maytin, E.V., et al. 1998. Transcription factors C/EBP  $\alpha$ , C/EBP  $\beta$  and CHOP (Gadd153) expressed during the differentiation program of keratinocytes *in vitro* and *in vivo*. *J. Invest. Dermatol.* 110: 238-246.
4. Niehof, M., et al. 2001. Interleukin-6-induced tethering of Stat3 to the LAP/C/EBP  $\beta$  promoter suggests a new mechanism of transcriptional regulation by Stat3. *J. Biol. Chem.* 276: 9016-9027.
5. Xiong, W., et al. 2001. Regulation of C/EBP  $\beta$  isoform synthesis by alternative translational initiation at multiple AUG start sites. *Nucleic Acids Res.* 29: 3087-3098.

## CHROMOSOMAL LOCATION

Genetic locus: CEBPB (human) mapping to 20q13.13.

## PRODUCT

C/EBP  $\beta$  (h): 293T Lysate represents a lysate of human C/EBP  $\beta$  transfected 293T cells and is provided as 100  $\mu$ g protein in 200  $\mu$ l SDS-PAGE buffer.

## STORAGE

Store at -20 $^{\circ}$  C. Repeated freezing and thawing should be minimized. Sample vial should be boiled once prior to use. Non-hazardous. No MSDS required.

## PROTOCOLS

See our web site at [www.scbt.com](http://www.scbt.com) for detailed protocols and support products.

## APPLICATIONS

C/EBP  $\beta$  (h): 293T Lysate is suitable as a Western Blotting positive control for human reactive C/EBP  $\beta$  antibodies. Recommended use: 10-20  $\mu$ l per lane.

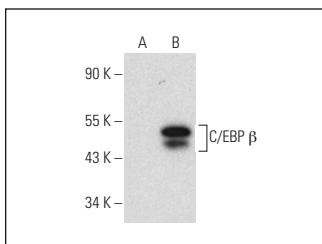
Control 293T Lysate: sc-117752 is available as a Western Blotting negative control lysate derived from non-transfected 293T cells.

C/EBP  $\beta$  (A-7): sc-398753 is recommended as a positive control antibody for Western Blot analysis of enhanced human C/EBP  $\beta$  expression in C/EBP  $\beta$  transfected 293T cells (starting dilution 1:100, dilution range 1:100-1:1,000).

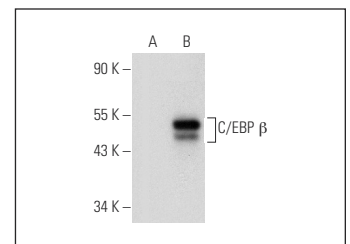
## RECOMMENDED SUPPORT REAGENTS

To ensure optimal results, the following support reagents are recommended:  
 1) Western Blotting: use m-IgG $\kappa$  BP-HRP: sc-516102 or m-IgG $\kappa$  BP-HRP (Cruz Marker): sc-516102-CM (dilution range: 1:1000-1:10000), Cruz Marker<sup>TM</sup> Molecular Weight Standards: sc-2035, UltraCruz<sup>®</sup> Blocking Reagent: sc-516214 and Western Blotting Luminol Reagent: sc-2048.

## DATA



C/EBP  $\beta$  (A-7): sc-398753. Western blot analysis of C/EBP  $\beta$  expression in non-transfected: sc-117752 (A) and human C/EBP  $\beta$  transfected: sc-176940 (B) 293T whole cell lysates.



C/EBP  $\beta$  (H-7): sc-7962. Western blot analysis of C/EBP  $\beta$  expression in non-transfected: sc-117752 (A) and human C/EBP  $\beta$  transfected: sc-176940 (B) 293T whole cell lysates.

## RESEARCH USE

For research use only, not for use in diagnostic procedures.