



SZABO SCANDIC

Part of Europa Biosite

Produktinformation



Forschungsprodukte & Biochemikalien



Zellkultur & Verbrauchsmaterial



Diagnostik & molekulare Diagnostik



Laborgeräte & Service

Weitere Information auf den folgenden Seiten!
See the following pages for more information!



Lieferung & Zahlungsart

siehe unsere [Liefer- und Versandbedingungen](#)

Zuschläge

- Mindermengenzuschlag
- Trockeneiszuschlag
- Gefahrgutzuschlag
- Expressversand

SZABO-SCANDIC HandelsgmbH

Quellenstraße 110, A-1100 Wien

T. +43(0)1 489 3961-0

F. +43(0)1 489 3961-7

mail@szabo-scandic.com

www.szabo-scandic.com

[linkedin.com/company/szaboscandic](https://www.linkedin.com/company/szaboscandic) 

Cbp (h): 293T Lysate: sc-177032

BACKGROUND

The Src family of protein tyrosine kinases (Src-PTKs) is important in the regulation of growth and differentiation of eukaryotic cells. The activity of Src-PTKs in cells of different types is negatively controlled by Csk. Csk binding protein (Cbp, also designated phosphoprotein associated with glycosphingo-lipid-enriched microdomains (GEMs) or PAG) is a transmembrane phosphoprotein that is ubiquitously expressed and binds specifically to the SH2 domain of Csk. Cbp is involved in the membrane localization of Csk and in the Csk-mediated inhibition of c-Src. In the plasma membrane Cbp is exclusively localized in the GM1 ganglioside-enriched detergent-insoluble membrane domain, which is important in receptor-mediated signalling. Cbp is a component of the regulatory mechanism controlling the activity of membrane-associated Src-PTKs.

REFERENCES

1. Simons, K. and Ikonen, E. 1997. Functional rafts in cell membranes. *Nature* 387: 569-572.
2. Brown, D.A. and London, E. 1998. Functions of lipid rafts in biological membranes. *Annu. Rev. Cell Dev. Biol.* 14: 111-136.
3. Anderson, R.G. 1998. The caveolae membrane system. *Annu. Rev. Biochem.* 67: 199-225.
4. Xavier, R., Brennan, T., Li, Q., McCormack, C. and Seed, B. 1998. Membrane compartmentation is required for efficient T cell activation. *Immunity* 8: 723-732.
5. Montixi, C., Langlet, C., Bernard, A.M., Thimonier, J., Dubois, C., Wurbel, M.A., Chauvin, J.P., Pierres, M. and He, H.T. 1998. Engagement of T cell receptor triggers its recruitment to low-density detergent-insoluble membrane domains. *EMBO J.* 17: 5334-5348.
6. Brdicka, T., Pavlistova, D., Leo, A., Bruyns, E., Korinek, V., Angelisova, P., Scherer, J., Shevchenko, A., Shevchenko, A., Hilgert, I., Cerny, J., Drbal, K., Kuramitsu, Y., Kornacker, B., Horejsi, V. and Schraven, B. 2000. Phosphoprotein associated with glycosphingolipid-enriched microdomains (PAG), a novel ubiquitously expressed transmembrane adaptor protein, binds the protein tyrosine kinase Csk and is involved in regulation of T cell activation. *J. Exp. Med.* 191: 1591-1604.
7. Semac, I., Palomba, C., Kulangara, K., Klages, N., van Echten-Deckert, G., Borisch, B. and Hoessli, D.C. 2003. Anti-CD20 therapeutic antibody Rituximab modifies the functional organization of rafts/microdomains of B lymphoma cells. *Cancer Res.* 63: 534-540.

CHROMOSOMAL LOCATION

Genetic locus: PAG1 (human) mapping to 8q21.13.

PRODUCT

Cbp (h): 293T Lysate represents a lysate of human Cbp transfected 293T cells and is provided as 100 µg protein in 200 µl SDS-PAGE buffer.

STORAGE

Store at -20° C. Repeated freezing and thawing should be minimized. Sample vial should be boiled once prior to use. Non-hazardous. No MSDS required.

APPLICATIONS

Cbp (h): 293T Lysate is suitable as a Western Blotting positive control for human reactive Cbp antibodies. Recommended use: 10-20 µl per lane.

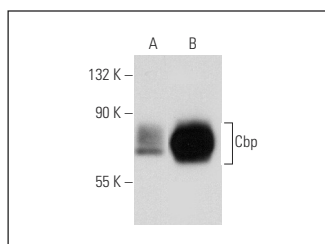
Control 293T Lysate: sc-117752 is available as a Western Blotting negative control lysate derived from non-transfected 293T cells.

Cbp (PAG-C1): sc-51517 is recommended as a positive control antibody for Western Blot analysis of enhanced human Cbp expression in Cbp transfected 293T cells (starting dilution 1:100, dilution range 1:100-1:1,000).

RECOMMENDED SUPPORT REAGENTS

To ensure optimal results, the following support reagents are recommended:
 1) Western Blotting: use m-IgGκ BP-HRP: sc-516102 or m-IgGκ BP-HRP (Cruz Marker): sc-516102-CM (dilution range: 1:1000-1:10000), Cruz Marker™ Molecular Weight Standards: sc-2035, UltraCruz® Blocking Reagent: sc-516214 and Western Blotting Luminol Reagent: sc-2048.

DATA



Cbp (PAG-C1): sc-51517. Western blot analysis of Cbp expression in non-transfected: sc-117752 (A) and human Cbp transfected: sc-177032 (B) 293T whole cell lysates.

RESEARCH USE

For research use only, not for use in diagnostic procedures.

PROTOCOLS

See our web site at www.scbt.com for detailed protocols and support products.