



# SZABO SCANDIC

Part of Europa Biosite

## Produktinformation



Forschungsprodukte & Biochemikalien



Zellkultur & Verbrauchsmaterial



Diagnostik & molekulare Diagnostik



Laborgeräte & Service

Weitere Information auf den folgenden Seiten!  
See the following pages for more information!



### Lieferung & Zahlungsart

siehe unsere [Liefer- und Versandbedingungen](#)

### Zuschläge

- Mindermengenzuschlag
- Trockeneiszuschlag
- Gefahrgutzuschlag
- Expressversand

### SZABO-SCANDIC HandelsgmbH

Quellenstraße 110, A-1100 Wien

T. +43(0)1 489 3961-0

F. +43(0)1 489 3961-7

[mail@szabo-scandic.com](mailto:mail@szabo-scandic.com)

[www.szabo-scandic.com](http://www.szabo-scandic.com)

[linkedin.com/company/szaboscandic](https://www.linkedin.com/company/szaboscandic) 

# FHL-1 (h3): 293 Lysate: sc-177230

## BACKGROUND

The four-and-a-half-LIM domain (FHL) proteins include FHL-1 (SLIM1), FHL-2 (SLIM3), FHL-3 (SLIM2) and FHL-4. The signature "half-domain", a single zinc finger domain located in the N-terminal region, differentiates FHLs from other LIM-only proteins, which have numbers of zinc fingers. Specific combinations of FHL proteins elicit selective activation of both CREB and CREM. Skeletal and cardiac muscle express FHL-1 in high levels as compared to the low level of expression in smooth muscle of the colon, small intestine and prostate. FHL-1 localizes to the cytosol of myoblasts, myotubes and differentiated myocytes. FHL-2 is located in cardiac and skeletal muscle, as well as in placenta and ovary tissues. FHL-3 is found in skeletal muscle, but absent in cardiac muscle. FHL-4 is expressed exclusively by the seminiferous epithelium of the testis, which suggests that FHL-4 is involved in spermatogenesis. The genetic loci for FHLs vary considerably despite similar amino acid sequences among the FHL group.

## REFERENCES

- Morgan, M.J., et al. 1996. SLIM defines a novel family of LIM-proteins expressed in skeletal muscle. *Biochem. Biophys. Res. Commun.* 225: 632-638.
- Chan, K.K., et al. 1998. Molecular cloning and characterization of FHL-2, a novel LIM domain protein preferentially expressed in human heart. *Gene* 210: 345-350.
- Lee, S.M., et al. 1998. Chromosomal mapping, tissue distribution and cDNA sequence of four-and-a-half LIM domain protein 1 (FHL-1). *Gene* 216: 163-170.
- Lee, S.M., et al. 1998. Chromosomal mapping of a skeletal muscle specific LIM-only protein FHL-3 to the distal end of the short arm of human chromosome 1. *Somat. Cell Mol. Genet.* 24: 197-202.
- Morgan, M.J., et al. 1999. The LIM proteins FHL-1 and FHL-3 are expressed differently in skeletal muscle. *Biochem. Biophys. Res. Commun.* 255: 245-250.
- Morgan, M.J., et al. 1999. The fourth member of the FHL family of LIM proteins is expressed exclusively in the testis. *Biochem. Biophys. Res. Commun.* 255: 251-255.
- Greene, W.K., et al. 1999. Genomic structure, tissue expression and chromosomal location of the LIM-only gene, SLIM1. *Gene* 232: 203-207.
- Fimia, G.M., et al. 2000. A family of LIM-only transcriptional coactivators: tissue-specific expression and selective activation of CREB and CREM. *Mol. Cell. Biol.* 20: 8613-8622.

## STORAGE

Store at -20° C. Repeated freezing and thawing should be minimized. Sample vial should be boiled once prior to use. Non-hazardous. No MSDS required.

## PROTOCOLS

See our web site at [www.scbt.com](http://www.scbt.com) for detailed protocols and support products.

## CHROMOSOMAL LOCATION

Genetic locus: FHL1 (human) mapping to Xq26.3.

## PRODUCT

FHL-1 (h3): 293 Lysate represents a lysate of human FHL-1 transfected 293 cells and is provided as 100 µg protein in 200 µl SDS-PAGE buffer.

## APPLICATIONS

FHL-1 (h3): 293 Lysate is suitable as a Western Blotting positive control for human reactive FHL-1 antibodies. Recommended use: 10-20 µl per lane.

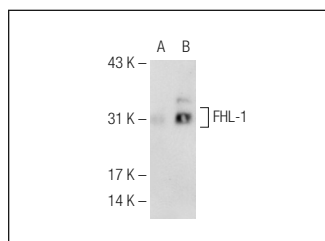
Control 293 Lysate: sc-110760 is available as a Western Blotting negative control lysate derived from non-transfected 293 cells.

FHL-1 (L9-42): sc-101046 is recommended as a positive control antibody for Western Blot analysis of enhanced human FHL-1 expression in FHL-1 transfected 293 cells (starting dilution 1:100, dilution range 1:100-1:1,000).

## RECOMMENDED SUPPORT REAGENTS

To ensure optimal results, the following support reagents are recommended:  
 1) Western Blotting: use m-IgGκ BP-HRP: sc-516102 or m-IgGκ BP-HRP (Cruz Marker): sc-516102-CM (dilution range: 1:1000-1:10000), Cruz Marker™ Molecular Weight Standards: sc-2035, UltraCruz® Blocking Reagent: sc-516214 and Western Blotting Luminol Reagent: sc-2048.

## DATA



FHL-1 (L9-42): sc-101046. Western blot analysis of FHL-1 expression in non-transfected: sc-110760 (A) and human FHL-1 transfected: sc-177230 (B) 293 whole cell lysates.

## RESEARCH USE

For research use only, not for use in diagnostic procedures.