



# SZABO SCANDIC

Part of Europa Biosite

## Produktinformation



Forschungsprodukte & Biochemikalien



Zellkultur & Verbrauchsmaterial



Diagnostik & molekulare Diagnostik



Laborgeräte & Service

Weitere Information auf den folgenden Seiten!  
See the following pages for more information!



### Lieferung & Zahlungsart

siehe unsere [Liefer- und Versandbedingungen](#)

### Zuschläge

- Mindermengenzuschlag
- Trockeneiszuschlag
- Gefahrgutzuschlag
- Expressversand

### SZABO-SCANDIC HandelsgmbH

Quellenstraße 110, A-1100 Wien

T. +43(0)1 489 3961-0

F. +43(0)1 489 3961-7

[mail@szabo-scandic.com](mailto:mail@szabo-scandic.com)

[www.szabo-scandic.com](http://www.szabo-scandic.com)

[linkedin.com/company/szaboscandic](https://www.linkedin.com/company/szaboscandic) 

# KLC4 (h5): 293T Lysate: sc-177433

## BACKGROUND

The kinesins constitute a large family of microtubule-dependent motor proteins which are responsible for the distribution of numerous organelles, vesicles and macromolecular complexes throughout the cell. Individual kinesin members play crucial roles in cell division, intracellular transport and membrane trafficking events, including endocytosis and transcytosis. KLC4 (kinesin light chain 4), also known as KNSL8, is a 619 amino acid member of the kinesin light chain family. Existing as a component of an oligomeric structure composed of heavy and light chains, KLC4 functions as a microtubule-associated protein that produces mechanical force and is thought to play a role in organelle transport. Multiple isoforms of KLC4 exist due to alternative splicing events.

## REFERENCES

1. Lamerdin, J.E., et al. 1996. Sequence analysis of the ERCC2 gene regions in human, mouse, and hamster reveals three linked genes. *Genomics* 34: 399-409.
2. Rahman, A., et al. 1998. Two kinesin light chain genes in mice. Identification and characterization of the encoded proteins. *J. Biol. Chem.* 273: 15395-15403.
3. Rahman, A., et al. 1999. Defective kinesin heavy chain behavior in mouse kinesin light chain mutants. *J. Cell Biol.* 146: 1277-1288.
4. Junco, A., et al. 2001. Kinesin light-chain KLC3 expression in testis is restricted to spermatids. *Biol. Reprod.* 64: 1320-1330.
5. Ichimura, T., et al. 2002. Phosphorylation-dependent interaction of kinesin light chain 2 and the 14-3-3 protein. *Biochemistry* 41: 5566-5572.
6. Bhullar, B., et al. 2003. Association of kinesin light chain with outer dense fibers in a microtubule-independent fashion. *J. Biol. Chem.* 278: 16159-16168.
7. Zhang, Y., et al. 2004. Rat kinesin light chain 3 associates with spermatid mitochondria. *Dev. Biol.* 275: 23-33.
8. DeBoer, S.R., et al. 2008. Conventional kinesin holoenzymes are composed of heavy and light chain homodimers. *Biochemistry* 47: 4535-4543.
9. Daub, H., et al. 2008. Kinase-selective enrichment enables quantitative phosphoproteomics of the kinome across the cell cycle. *Mol. Cell* 31: 438-448.

## CHROMOSOMAL LOCATION

Genetic locus: KLC4 (human) mapping to 6p21.1.

## PRODUCT

KLC4 (h5): 293T Lysate represents a lysate of human KLC4 transfected 293T cells and is provided as 100 µg protein in 200 µl SDS-PAGE buffer.

## STORAGE

Store at -20° C. Repeated freezing and thawing should be minimized. Sample vial should be boiled once prior to use. Non-hazardous. No MSDS required.

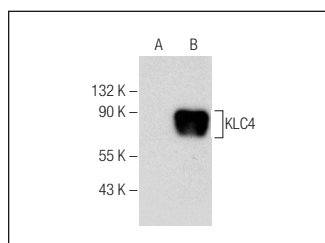
## APPLICATIONS

KLC4 (h5): 293T Lysate is suitable as a Western Blotting positive control for human reactive KLC4 antibodies. Recommended use: 10-20 µl per lane.

Control 293T Lysate: sc-117752 is available as a Western Blotting negative control lysate derived from non-transfected 293T cells.

KLC4 (B-8): sc-376702 is recommended as a positive control antibody for Western Blot analysis of enhanced human KLC4 expression in KLC4 transfected 293T cells (starting dilution 1:100, dilution range 1:100-1:1,000).

## DATA



KLC4 (B-8): sc-376702. Western blot analysis of KLC4 expression in non-transfected: sc-117752 (A) and human KLC4 transfected: sc-177433 (B) 293T whole cell lysates.

## RESEARCH USE

For research use only, not for use in diagnostic procedures.

## PROTOCOLS

See our web site at [www.scbt.com](http://www.scbt.com) for detailed protocols and support products.