



SZABO SCANDIC

Part of Europa Biosite

Produktinformation



Forschungsprodukte & Biochemikalien



Zellkultur & Verbrauchsmaterial



Diagnostik & molekulare Diagnostik



Laborgeräte & Service

Weitere Information auf den folgenden Seiten!
See the following pages for more information!



Lieferung & Zahlungsart

siehe unsere [Liefer- und Versandbedingungen](#)

Zuschläge

- Mindermengenzuschlag
- Trockeneiszuschlag
- Gefahrgutzuschlag
- Expressversand

SZABO-SCANDIC HandelsgmbH

Quellenstraße 110, A-1100 Wien

T. +43(0)1 489 3961-0

F. +43(0)1 489 3961-7

mail@szabo-scandic.com

www.szabo-scandic.com

[linkedin.com/company/szaboscandic](https://www.linkedin.com/company/szaboscandic) 

Laminin β -3 (h2): 293T Lysate: sc-177459

BACKGROUND

The Laminins comprise a growing family of disulfide-linked heterotrimers consisting of three genetically distinct polypeptide chains, designated α , β and γ . A major component of the basal lamina, laminins play a crucial role in providing a scaffolding upon which tissues are assembled and which serves as a physical barrier separating specialized tissues. During embryogenesis and early development, cells migrate along basement membranes, which are required for the polarization of cells. At least eight Laminin isoforms have been described: α -1, α -2, α -3, β -1, β -2, β -3, γ -1 and γ -2. Each isoform differs in the relative affinity with which it associates with individual Laminin receptors.

REFERENCES

1. Timpl, R. and Brown, J.C. 1994. The laminins. *Matrix Biol.* 14: 275-281.
2. Yurchenco, P.D. and O'Rear, J.J. 1994. Basal lamina assembly. *Curr. Opin. Cell Biol.* 6: 674-681.
3. Engvall, E. 1995. Structure and function of basement membranes. *Int. J. Dev. Biol.* 39: 781-787.
4. Farwell, A.P., Tranter, M.P. and Leonard, J.L. 1995. Thyroxine-dependent regulation of integrin-Laminin interactions in astrocytes. *Endocrinol.* 136: 3909-3915.
5. Aumailley, M. and Krieg, T. 1996. Laminins: a family of diverse multi-functional molecules of basement membranes. *J. Invest. Dermatol.* 106: 209-214.
6. Nomizu, M., Utani, A., Beck, K., Otaka, A., Roller, P.P. and Yamada, Y. 1996. Mechanism of Laminin chain assembly into a triple-stranded coiled-coil structure. *Biochemistry* 35: 2885-2893.
7. Ziober, B.L., Lin, C.S. and Kramer, R.H. 1996. Laminin-binding integrins in tumor progression and metastasis. *Sem. Cancer Biol.* 7: 119-128.
8. Ancsin, J.B. and Kisilevsky, R. 1996. Laminin interactions important for basement membrane assembly are promoted by zinc and implicate Laminin zinc finger-like sequences. *J. Biol. Chem.* 271: 6845-6851.
9. Carloni, V., Romanelli, R.G., Pinzani, M., Laffi, G. and Gentilini P. 1996. Expression and function of integrin receptors for collagen and Laminin in cultured human hepatic stellate cells. *Gastroenterology* 110: 1127-1136.

CHROMOSOMAL LOCATION

Genetic locus: LAMB3 (human) mapping to 1q32.2.

PRODUCT

Laminin β -3 (h2): 293T Lysate represents a lysate of human Laminin β -3 transfected 293T cells and is provided as 100 μ g protein in 200 μ l SDS-PAGE buffer.

STORAGE

Store at -20° C. Repeated freezing and thawing should be minimized. Sample vial should be boiled once prior to use. Non-hazardous. No MSDS required.

APPLICATIONS

Laminin β -3 (h2): 293T Lysate is suitable as a Western Blotting positive control for human reactive Laminin β -3 antibodies. Recommended use: 10-20 μ l per lane.

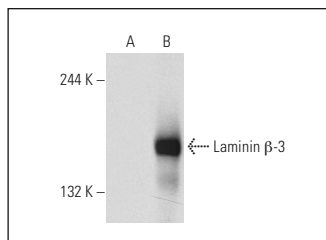
Control 293T Lysate: sc-117752 is available as a Western Blotting negative control lysate derived from non-transfected 293T cells.

Laminin β -3 (A-6): sc-133178 is recommended as a positive control antibody for Western Blot analysis of enhanced human Laminin β -3 expression in Laminin β -3 transfected 293T cells (starting dilution 1:100, dilution range 1:100-1:1,000).

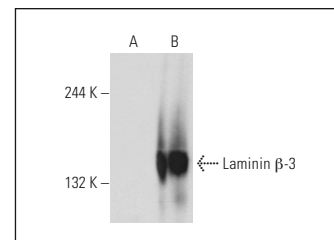
RECOMMENDED SUPPORT REAGENTS

To ensure optimal results, the following support reagents are recommended:
1) Western Blotting: use m-IgG κ BP-HRP: sc-516102 or m-IgG κ BP-HRP (Cruz Marker): sc-516102-CM (dilution range: 1:1000-1:10000), Cruz Marker™ Molecular Weight Standards: sc-2035, UltraCruz® Blocking Reagent: sc-516214 and Western Blotting Luminol Reagent: sc-2048.

DATA



Laminin β -3 (A-6): sc-133178. Western blot analysis of Laminin β -3 expression in non-transfected: sc-117752 (A) and human Laminin β -3 transfected: sc-177459 (B) 293T whole cell lysates.



Laminin β -3 (17): sc-135968. Western blot analysis of Laminin β -3 expression in non-transfected: sc-117752 (A) and human Laminin β -3 transfected: sc-177459 (B) 293T whole cell lysates.

RESEARCH USE

For research use only, not for use in diagnostic procedures.

PROTOCOLS

See our web site at www.scbt.com for detailed protocols and support products.