



SZABO SCANDIC

Part of Europa Biosite

Produktinformation



Forschungsprodukte & Biochemikalien



Zellkultur & Verbrauchsmaterial



Diagnostik & molekulare Diagnostik



Laborgeräte & Service

Weitere Information auf den folgenden Seiten!
See the following pages for more information!



Lieferung & Zahlungsart

siehe unsere [Liefer- und Versandbedingungen](#)

Zuschläge

- Mindermengenzuschlag
- Trockeneiszuschlag
- Gefahrgutzuschlag
- Expressversand

SZABO-SCANDIC HandelsgmbH

Quellenstraße 110, A-1100 Wien

T. +43(0)1 489 3961-0

F. +43(0)1 489 3961-7

mail@szabo-scandic.com

www.szabo-scandic.com

[linkedin.com/company/szaboscandic](https://www.linkedin.com/company/szaboscandic) 

▶ NTAL (h): 293T Lysate: sc-177644

BACKGROUND

Non-T cell activation linker (NTAL), a transmembrane adaptor protein, is also designated membrane-associated adapter molecule, Williams-Beuren syndrome chromosome region 15 protein or LAB (linker of activated B cells). NTAL is present in membrane microdomains (rafts) of B cells, NK cells and myeloid cells, and in monocytes and mast cells, but not in resting T lymphocytes. NTAL becomes rapidly tyrosine-phosphorylated upon cross-linking of the B cell receptor (BCR) or of high-affinity Fc γ and Fc ϵ receptors of myeloid cells and then associates with the cytoplasmic signaling molecules. NTAL is highly expressed in spleen, lymph node germinal centers and peripheral blood lymphocytes. Defects in the gene encoding for NTAL may cause the musculo-skeletal and cardiovascular abnormalities that characterize the rare developmental disorder Williams-Beuren syndrome (WBS).

REFERENCES

- Martindale, D.W., Wilson, M.D., Wang, D., Burke, R.D., Chen, X., Duronio, V. and Koop, B.F. 2000. Comparative genomic sequence analysis of the Williams syndrome region (LIMK1-RFC2) of human chromosome 7q11.23. *Mamm. Genome* 11: 890-898.
- Janssen, E., Zhu, M., Zhang, W., Koonpaew, S. and Zhang, W. 2003. LAB: a new membrane-associated adaptor molecule in B cell activation. *Nat. Immunol.* 4: 117-123.
- Tkaczyk, C., Horejsi, V., Iwaki, S., Draber, P., Samelson, L.E., Satterthwaite, A.B., Nahm, D.H., Metcalfe, D.D. and Gilfillan, A.M. 2004. NTAL phosphorylation is a pivotal link between the signaling cascades leading to human mast cell degranulation following Kit activation and Fc ϵ RI aggregation. *Blood* 104: 207-214.
- Koonpaew, S., Janssen, E., Zhu, M. and Zhang, W. 2004. The importance of three membrane-distal tyrosines in the adaptor protein NTAL/LAB. *J. Biol. Chem.* 279: 11229-11235.
- Tedoldi, S., Paterson, J.C., Hansmann, M.L., Natkunam, Y., Rüdiger, T., Angelisova, P., Du, M.Q., Robertson, H., Roncador, G., Sanchez, L., Pozzobon, M., Masir, N., Barry, R., Pileri, S., Mason, D.Y., Marafioti, T. and Horejsi, V. 2005. Transmembrane adaptor molecules: a new category of lymphoid-cell markers. *Blood* 107: 213-221

CHROMOSOMAL LOCATION

Genetic locus: LAT2 (human) mapping to 7q11.23.

PRODUCT

NTAL (h): 293T Lysate represents a lysate of human NTAL transfected 293T cells and is provided as 100 μ g protein in 200 μ l SDS-PAGE buffer.

STORAGE

Store at -20° C. Repeated freezing and thawing should be minimized. Sample vial should be boiled once prior to use. Non-hazardous. No MSDS required.

PROTOCOLS

See our web site at www.scbt.com for detailed protocols and support products.

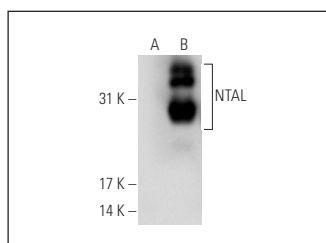
APPLICATIONS

NTAL (h): 293T Lysate is suitable as a Western Blotting positive control for human reactive NTAL antibodies. Recommended use: 10-20 μ l per lane.

Control 293T Lysate: sc-117752 is available as a Western Blotting negative control lysate derived from non-transfected 293T cells.

NTAL (NAP-07): sc-51686 is recommended as a positive control antibody for Western Blot analysis of enhanced human NTAL expression in NTAL transfected 293T cells (starting dilution 1:100, dilution range 1:100-1:1,000).

DATA



NTAL (NAP-07): sc-51686. Western blot analysis of NTAL expression in non-transfected: sc-117752 (A) and human NTAL transfected: sc-177644 (B) 293T whole cell lysates.

RESEARCH USE

For research use only, not for use in diagnostic procedures.