



SZABO SCANDIC

Part of Europa Biosite

Produktinformation



Forschungsprodukte & Biochemikalien



Zellkultur & Verbrauchsmaterial



Diagnostik & molekulare Diagnostik



Laborgeräte & Service

Weitere Information auf den folgenden Seiten!
See the following pages for more information!



Lieferung & Zahlungsart

siehe unsere [Liefer- und Versandbedingungen](#)

Zuschläge

- Mindermengenzuschlag
- Trockeneiszuschlag
- Gefahrgutzuschlag
- Expressversand

SZABO-SCANDIC HandelsgmbH

Quellenstraße 110, A-1100 Wien

T. +43(0)1 489 3961-0

F. +43(0)1 489 3961-7

mail@szabo-scandic.com

www.szabo-scandic.com

[linkedin.com/company/szaboscandic](https://www.linkedin.com/company/szaboscandic) 

PAI-RBP1 (h4): 293 Lysate: sc-177693

BACKGROUND

PAI-RBP1 (plasminogen activator inhibitor 1 RNA-binding protein), also known as SERBP1 (SERPINE1 mRNA-binding protein 1), CGI-55, CHD3IP (chromodomain helicase DNA binding protein 3 interacting protein), HABP4L or PAI-RBP1, is a membrane-associated protein that localizes to the nucleus, the perinuclear region of the cytoplasm and the plasma membrane. PAI-RBP1 is believed to play a role in the regulation of mRNA stability, as it specifically binds to the CRS (cyclic nucleotide-responsive sequence) motif of the PAI-1 mRNA and acts to stabilize the mRNA and regulate its expression. In addition, PAI-RBP1 interacts with Mi2- α and may be involved in chromatin remodeling. PAI-RBP1 also interacts with PGRMC1 and participates in the transduction of the antiapoptotic action of progesterone in ovarian cell types. The gene encoding PAI-RBP1 is overexpressed in ovarian cancer, suggesting a possible role for PAI-RBP1 in tumorigenesis and tumor metastasis.

REFERENCES

1. Heaton, J.H., et al. 2001. Identification and cDNA cloning of a novel RNA-binding protein that interacts with the cyclic nucleotide-responsive sequence in the type-1 plasminogen activator inhibitor mRNA. *J. Biol. Chem.* 276: 3341-3347.
2. Lemos, T.A., et al. 2003. Characterization of a new family of proteins that interact with the C-terminal region of the chromatin-remodeling factor CHD3. *FEBS Lett.* 533: 14-20.
3. Peluso, J.J., et al. 2005. Expression and function of PAI-RBP1 within gonadotropin-primed immature rat ovaries: PAI-RBP1 regulation of granulosa and luteal cell viability. *Biol. Reprod.* 73: 261-270.
4. Passos, D.O., et al. 2006. Ki-1/57 interacts with PRMT1 and is a substrate for arginine methylation. *FEBS J.* 273: 3946-3961.
5. Peluso, J.J., et al. 2006. Progesterone membrane receptor component 1 expression in the immature rat ovary and its role in mediating progesterone's antiapoptotic action. *Endocrinology* 147: 3133-3140.
6. Lemos, T.A. and Kobarg, J. 2006. CGI-55 interacts with nuclear proteins and co-localizes to p80-coilin positive-coiled bodies in the nucleus. *Cell Biochem. Biophys.* 44: 463-474.
7. Koensgen, D., et al. 2007. Expression analysis and RNA localization of PAI-RBP1 (SERBP1) in epithelial ovarian cancer: association with tumor progression. *Gynecol. Oncol.* 107: 266-273.
8. Goodier, J.L., et al. 2007. LINE-1 ORF1 protein localizes in stress granules with other RNA-binding proteins, including components of RNA interference RNA-induced silencing complex. *Mol. Cell. Biol.* 27: 6469-6483.
9. Peluso, J.J., et al. 2008. Progesterone receptor membrane component-1 (PGRMC1) is the mediator of progesterone's antiapoptotic action in spontaneously immortalized granulosa cells as revealed by PGRMC1 small interfering ribonucleic acid treatment and functional analysis of PGRMC1 mutations. *Endocrinology* 149: 534-543.

STORAGE

Store at -20° C. Repeated freezing and thawing should be minimized. Sample vial should be boiled once prior to use. Non-hazardous. No MSDS required.

CHROMOSOMAL LOCATION

Genetic locus: SERBP1 (human) mapping to 1p31.3.

PRODUCT

PAI-RBP1 (h4): 293 Lysate represents a lysate of human PAI-RBP1 transfected 293 cells and is provided as 100 μ g protein in 200 μ l SDS-PAGE buffer.

APPLICATIONS

PAI-RBP1 (h4): 293 Lysate is suitable as a Western Blotting positive control for human reactive PAI-RBP1 antibodies. Recommended use: 10-20 μ l per lane.

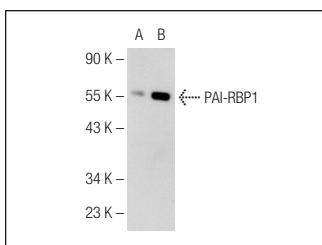
Control 293 Lysate: sc-110760 is available as a Western Blotting negative control lysate derived from non-transfected 293 cells.

PAI-RBP1 (1B9): sc-100800 is recommended as a positive control antibody for Western Blot analysis of enhanced human PAI-RBP1 expression in PAI-RBP1 transfected 293 cells (starting dilution 1:100, dilution range 1:100-1:1,000).

RECOMMENDED SUPPORT REAGENTS

To ensure optimal results, the following support reagents are recommended:
1) Western Blotting: use m-IgG κ BP-HRP: sc-516102 or m-IgG κ BP-HRP (Cruz Marker): sc-516102-CM (dilution range: 1:1000-1:10000), Cruz Marker™ Molecular Weight Standards: sc-2035, UltraCruz® Blocking Reagent: sc-516214 and Western Blotting Luminol Reagent: sc-2048.

DATA



PAI-RBP1 (1B9): sc-100800. Western blot analysis of PAI-RBP1 expression in non-transfected: sc-110760 (A) and human PAI-RBP1 transfected: sc-177693 (B) 293 whole cell lysates.

RESEARCH USE

For research use only, not for use in diagnostic procedures.

PROTOCOLS

See our web site at www.scbt.com for detailed protocols and support products.