



SZABO SCANDIC

Part of Europa Biosite

Produktinformation



Forschungsprodukte & Biochemikalien



Zellkultur & Verbrauchsmaterial



Diagnostik & molekulare Diagnostik



Laborgeräte & Service

Weitere Information auf den folgenden Seiten!
See the following pages for more information!



Lieferung & Zahlungsart

siehe unsere [Liefer- und Versandbedingungen](#)

Zuschläge

- Mindermengenzuschlag
- Trockeneiszuschlag
- Gefahrgutzuschlag
- Expressversand

SZABO-SCANDIC HandelsgmbH

Quellenstraße 110, A-1100 Wien

T. +43(0)1 489 3961-0

F. +43(0)1 489 3961-7

mail@szabo-scandic.com

www.szabo-scandic.com

[linkedin.com/company/szaboscandic](https://www.linkedin.com/company/szaboscandic) 

PKC β (h2): 293T Lysate: sc-177741

BACKGROUND

Members of the protein kinase C (PKC) family play a key regulatory role in a variety of cellular functions including cell growth and differentiation, gene expression, hormone secretion and membrane function. PKCs were originally identified as serine/threonine protein kinases whose activity was dependent on calcium and phospholipids. Diacylglycerols (DAG) and tumor promoting phorbol esters bind to and activate PKC. PKCs can be subdivided into at least two major classes including conventional (c) PKC isoforms (α , β I, β II and γ) and novel (n) PKC isoforms (δ , ϵ , ζ , η and θ). Patterns of expression for each PKC isoform differ among tissues and PKC family members exhibit clear differences in their cofactor dependencies. For instance, the kinase activities of nPKC δ and ϵ are independent of Ca^{2+} . On the other hand, nPKC δ and ϵ , as well as all of the cPKC members, possess phorbol ester-binding activities and kinase activities.

REFERENCES

1. Takai, Y., et al. 1979. Calcium-dependent activation of a multifunctional protein kinase by membrane phospholipids. *J. Biol. Chem.* 254: 3692-3695.
2. Castagna, M., et al. 1982. Direct activation of calcium-activated, phospholipid-dependent protein kinase by tumor-promoting phorbol esters. *J. Biol. Chem.* 257: 7847-7851.
3. Kikkawa, U., et al. 1983. Protein kinase C as a possible receptor of tumor-promoting phorbol esters. *J. Biol. Chem.* 258: 11442-11445.
4. Nishizuka, Y. 1984. The role of protein kinase C in cell surface signal transduction and tumour promotion. *Nature* 308: 693-698.
5. Nishizuka, Y. 1984. Turnover of inositol phospholipids and signal transduction. *Science* 225: 1365-1370.

CHROMOSOMAL LOCATION

Genetic locus: PRKCB1 (human) mapping to 16p11.2.

PRODUCT

PKC β (h2): 293T Lysate represents a lysate of human PKC β transfected 293T cells and is provided as 100 μg protein in 200 μl SDS-PAGE buffer.

STORAGE

Store at -20°C . Repeated freezing and thawing should be minimized. Sample vial should be boiled once prior to use. Non-hazardous. No MSDS required.

APPLICATIONS

PKC β (h2): 293T Lysate is suitable as a Western Blotting positive control for human reactive PKC β antibodies. Recommended use: 10-20 μl per lane.

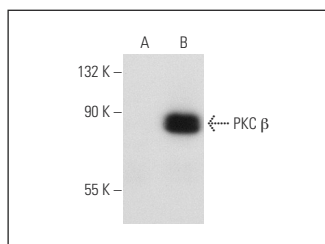
Control 293T Lysate: sc-117752 is available as a Western Blotting negative control lysate derived from non-transfected 293T cells.

PKC β II (F-7): sc-13149 is recommended as a positive control antibody for Western Blot analysis of enhanced human PKC β expression in PKC β transfected 293T cells (starting dilution 1:100, dilution range 1:100-1:1,000).

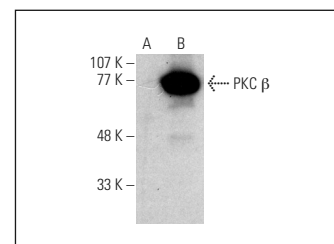
RECOMMENDED SUPPORT REAGENTS

To ensure optimal results, the following support reagents are recommended:
 1) Western Blotting: use m-IgG κ BP-HRP: sc-516102 or m-IgG κ BP-HRP (Cruz Marker): sc-516102-CM (dilution range: 1:1000-1:10000), Cruz Marker[™] Molecular Weight Standards: sc-2035, TBS Blotto A Blocking Reagent: sc-2333 and Western Blotting Luminol Reagent: sc-2048.

DATA



PKC β II (F-7): sc-13149. Western blot analysis of PKC β expression in non-transfected: sc-117752 (A) and human PKC β transfected: sc-177741 (B) 293T whole cell lysates.



PKC β II (F-7) HRP: sc-13149 HRP. Direct western blot analysis of PKC β expression in non-transfected: sc-117752 (A) and human PKC β transfected: sc-177741 (B) 293T whole cell lysates.

RESEARCH USE

For research use only, not for use in diagnostic procedures.

PROTOCOLS

See our web site at www.scbt.com for detailed protocols and support products.